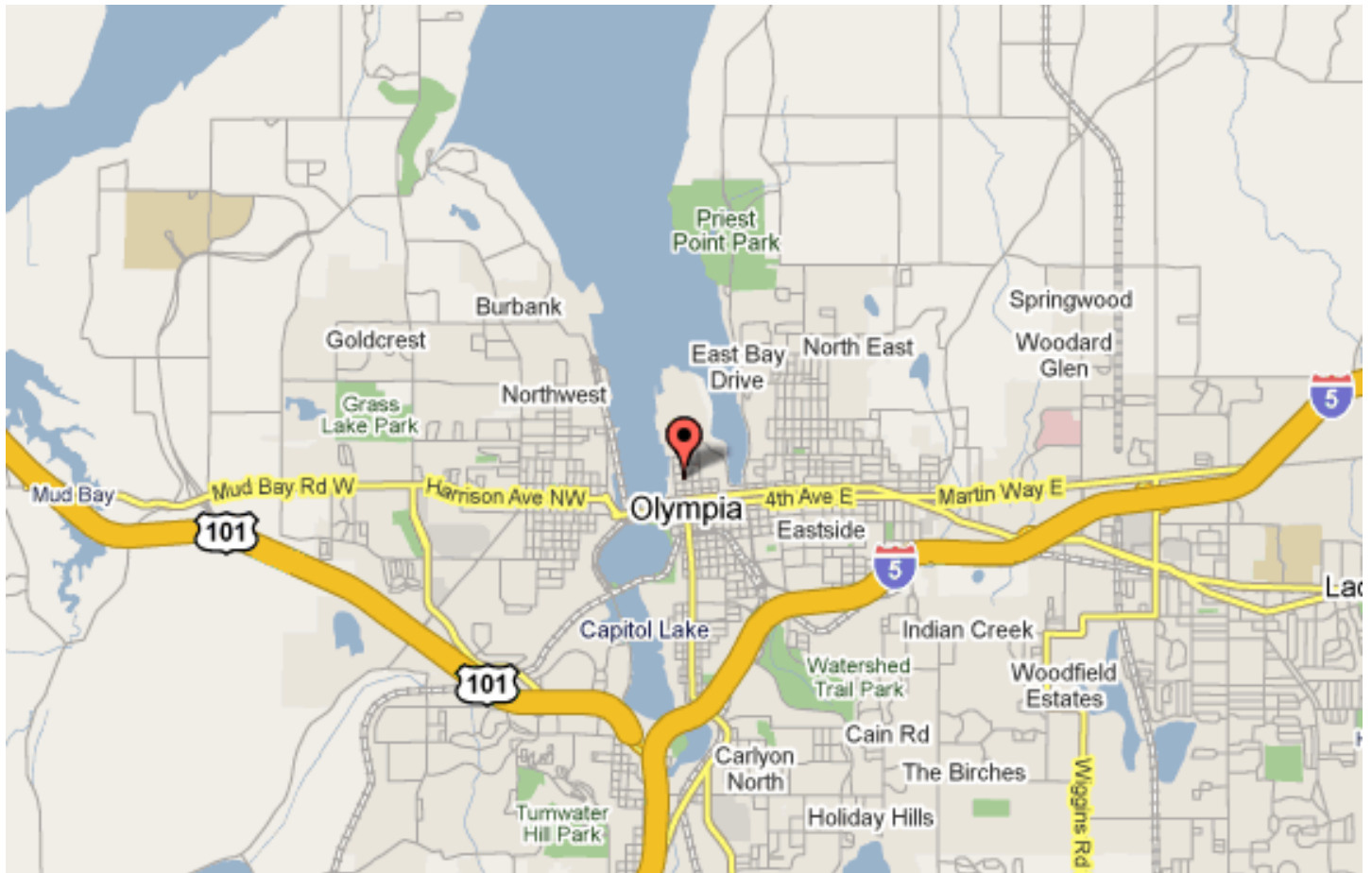


# THE eQRM

APRIL 2017



**ARRL moving to Mt Olympia Washington, west coast here we come!**

**The BVARA in Beaver County Pennsylvania**

Beaver Valley Amateur Radio Association

W3SGJ

Repeater 145.310 PL 131.8

## On the cover:

The ARRL is moving to Mt Olympia Washington in an announcement from ARRL representative Mr. Oulls April 2017. "To the west coast we come!"  
Read more details on page 14.

## Inside this edition

Who We Are	3	Radio Sport	11
This Month	4	Bits and Pieces	12
Propagation	6	Interview with a Ham	13
Get a License or Upgrade	7	It's Your Dime	14
New License and Upgrades	8	Interesting Links	16
Membership	9	For all Radio Operators	17
Hamfests & General Announcements	10		

### Check into our nets

#### Wednesday 2 Meter

**8:30PM on 145.310 MHz PL 131.8**

#### Wednesday 10 Meter

**9:00PM on 28.470 MHz**

The eQRM is a publication of the Beaver Valley Amateur Radio Association (BVARA) and is Copyright 2010 - 2017. All material presented in this publication is not necessarily the views of the American Radio Relay League (ARRL), BVARA, or members of the said organizations. If you would like to contact the editor of the eQRM, please email David at [kc3bxc.73@gmail.com](mailto:kc3bxc.73@gmail.com). Please visit us online at [www.W3SGJ.org](http://www.W3SGJ.org). To subscribe to our newsletter, please visit [W3SGJ.org/newsletter.php](http://W3SGJ.org/newsletter.php)

# Who We Are

## 2017 BVARA OFFICERS

President: Jack Spencer, KZ3Z

Vice President: Mark Kavic, KB3LED

2nd Vice Pres.: Rob Miller, N3OJL

Treasurer: Pam Spencer, W3PMS

Secretary: Norm Trunick, K3NJT

Director: Bob Winkle, N3AZZ

Director: Bob Croft, KB3RHN

Trustee: Rich Soltesz, K3SOM



## MONTHLY MEETINGS

E-Board meetings are now held the Saturday before the monthly club meeting.

VE testing begins at 5:00 PM.

Regular meetings are at 6:30 PM

All meetings are held at the  
Beaver County  
Emergency Services Center  
351 14th Street  
Ambridge, PA 15003  
on the second Thursday of every month  
(unless otherwise stated).



## 2017 MEETING DATES

Apr 13

May 11

Jun 08

Jul 14

Aug 12 Corn Roast

Sep 14

Oct 12

Nov 09

Dec 09 Christmas Party



# This Month

## BVARA Club Feature Presentation *This Month:*

### *Speaker:*

Rich Soltesz  
K3SOM

### *Topic:*

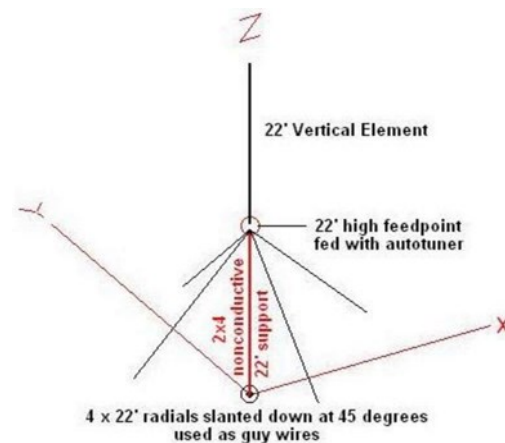
Elevated-Radial Vertical Antennas

### *Including:*

Continuing with our BVARA Presentation Series this year, our topic this month investigates one style of multiband antenna that could be of increasing interest as we continue to slide down the back end of the recent sunspot peak. With the ability to offer decent performance at low take-off angles, with the increasing availability of remote auto tuners at attractive prices, and with reasonable material costs, the possibilities of this vertical antenna deserved a closer look.

With the availability of combinations of software analysis tools and faster PCs, a detailed analysis of these antennas has become much easier to do. A benefit now is less manual effort to analyze and develop conclusions from the very large quantity of readily-available computational data. We've converted all of that computational data from *AutoEZ* and *EZNEC 6+* into meaningful results. From those results, performance expectations can easily be seen as well as the impact of the number of radials, the angle of those radials, the height above ground, and the length of the driven element.

But wait, there's more! The real world around Western PA is not flat like Kansas nor sandy or mountainous like other parts of the country. The impact of using radials with differing lengths and angles will be explored to indicate what you might expect under less than ideal conditions. Whether you are a beginner or a veteran ham, bring your questions to the meeting because this is one exciting presentation that you won't want to miss.



**A 40m-10m Vertical with Elevated Radials**

Design and initial model courtesy Cecil Moore, W5DXP

### *Rich's Background:*

Extra Class Ham, Licensed since 1962, VE,  
B.S. Electrical Engineering

# More this Month

## Weekly

The Freedom Square Diner in Monaca has a great wait staff. Come let them take your order.

Thursday Morning Breakfast  
(or you can have lunch)



The BVARA meets every Thursday at the Freedom Square Diner in Center Township, just to the right of the Cinemark Center Township Marketplace at 09:30 AM. All radio amateurs and those interested in amateur radio are encouraged to come join us at our Thursday morning breakfast.

## See you Thursday at



The eQRM urges all Beaver County licensed amateurs to participate in the County's RACES and ARES programs.

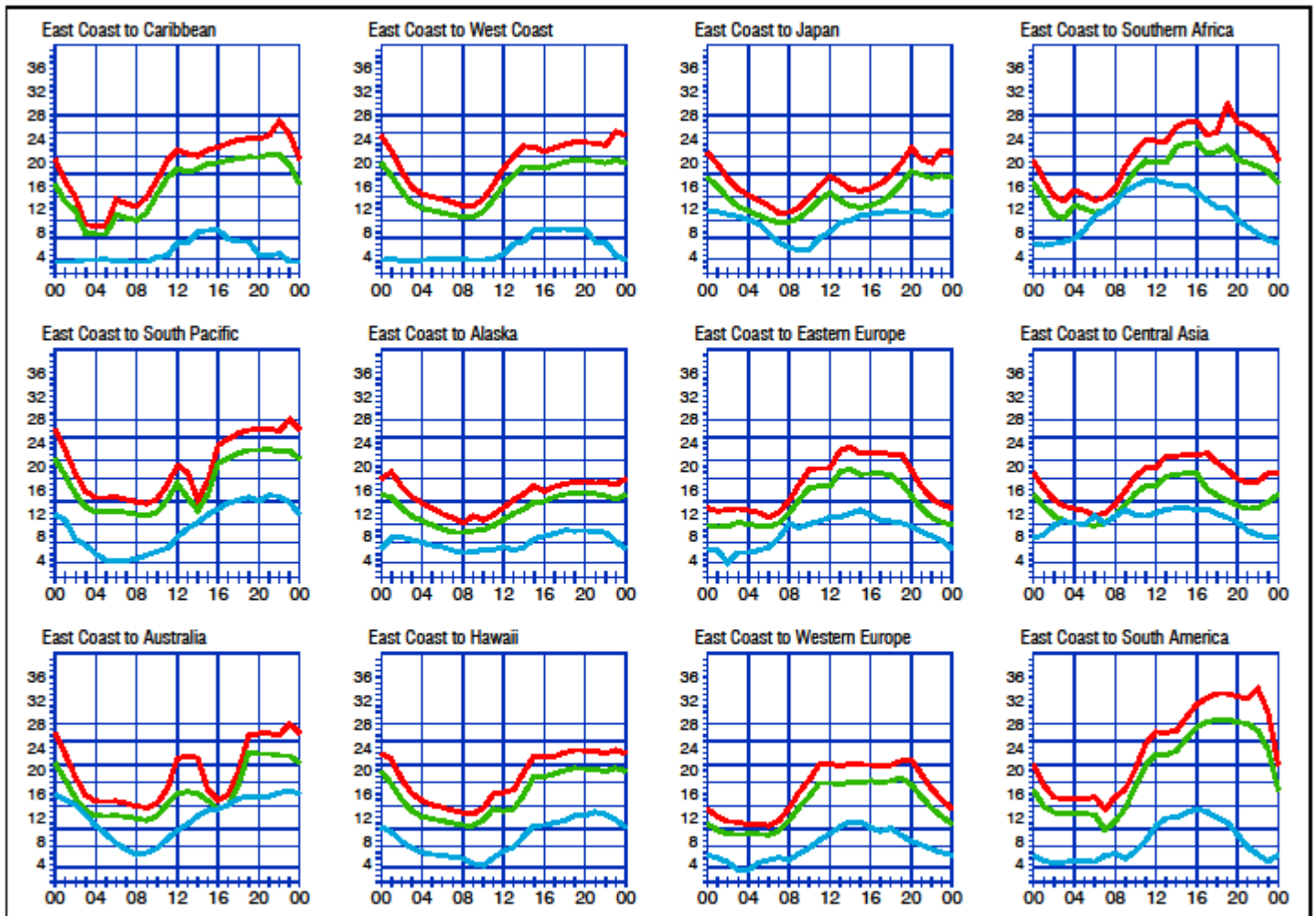
Any Beaver County Amateur that is interested in participating in the RACES/ARES programs can do so by checking into the Beaver County Public Service Net which meets every Monday evening at 8:30 PM local time on the N3TN 146.850 MHz repeater (131.8 PL)

RACES / ARES

The eQRM Urges All County Hams to Participate.



# Propagation



**When are the bands open?** These charts, generated using CAPman, show probabilities for average HF propagation in the month of April for the paths indicated. The horizontal axes show Coordinated Universal Time (UTC), and the vertical axis frequency in MHz. On 10% of the days of this period, the highest frequencies propagated will be at least as high as the upper red curves (HFF, highest possible frequency) and on 50% of the days they will be at least as high as the green curves (MUF, classical maximum usable frequency). The blue curves show the lowest usable frequency (LUF) for a 1500-W CW transmitter. For SSB or a lower transmitter power, the LUF will be somewhat higher than the blue curves indicate. See Oct 1994 QST, pp 27-30, and Feb 1995 QST, pp 34-36, for more details. The predictions assume an observed 2800-MHz solar flux value of 73. This is a Very Low level of solar activity. See the detailed propagation tables on *The ARRL Antenna Book CD-ROM*.

## PROPAGATION

The East Coast propagation chart listed here is for March 2017.

If you would like more information in general, please visit <http://www.arrl.org/propagation>

# Get your License or Upgrade

If you are interested in getting your first FCC license or upgrading your current amateur radio license, the Beaver Valley Amateur Radio Association holds VE Test sessions (Volunteer Examinations) the second Thursday of each month at the Nine One One center in Ambridge Pennsylvania prior to our BVARA Club meeting. If there is no meeting there is no test session. Please come take your test with us!



For more information, contact :  
Rich Soltesz, K3SOM  
(724) 847-0610  
k3som@arrl.net

## VE TEST SESSIONS

Beaver County Emergency Services Center 351 14th Street Ambridge, PA 15003.  
Tests begin promptly at 5 pm on the same day as BVARA Club Meetings  
(the second Thursday of the month).  
All classes of amateur radio license tests are administered.

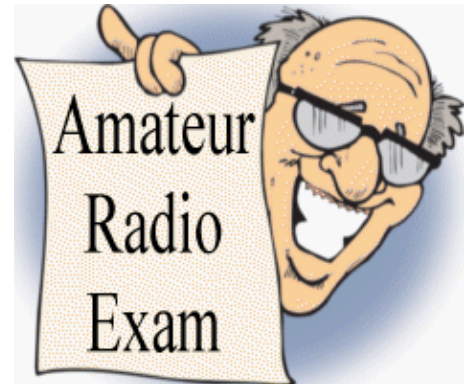
ALL candidates MUST bring ALL of the following:

1. 2 forms of I.D. - one MUST be a photo I.D.
2. A pencil AND a pen with blue or black ink.
3. The original AND a photocopy of any valid ham license.
4. The original AND a photocopy of any C.S.C.E.
5. The test fee of \$15 - cash, check, or money order.

# New License and Upgrades

BVARA VE Testing

Congratulations to our  
three newest Technician  
Class amateurs



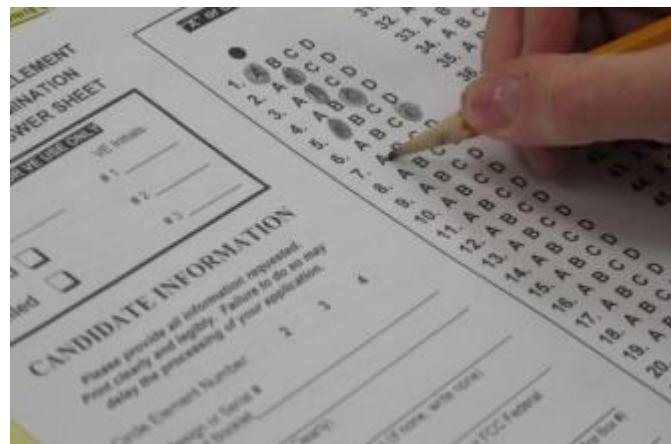
Jim Norman Allen – KC3IXE, Beaver Falls, PA

Jason Hast – KC3IXF, Aliquippa, PA

Mark Munyon – KE8GLZ, Columbiana, OH



Our next club meeting is on April 13th beginning at 6:30 pm and you are welcome and encouraged to attend. Because you took your Technician Class test with us, you have free membership to our club for 2017 if you wish to be a member.





# Membership Information

By becoming a BVARA member you help secure the future of Amateur Radio in Beaver County. Additionally, the BVARA receives a portion of each ARRL

membership you purchase!

## Join the BVARA and ARRL

Sign up for:	Price	
<input type="checkbox"/> BVARA full membership	20.00	_____
<input type="checkbox"/> BVARA student membership	15.00	_____
<input type="checkbox"/> BVARA associate membership	10.00	_____
<input type="checkbox"/> BVARA Child under 21 at home membership	5.00	_____
<input type="checkbox"/> One year ARRL membership	49.00	_____
A Club Donation		_____
ARRL Member?    Yes    No	Total Enclosed	_____

Your License Class (If you have one.)

<input type="checkbox"/> Technician	Name _____
<input type="checkbox"/> General	Address _____
<input type="checkbox"/> Advanced	_____
<input type="checkbox"/> Extra Class	Email _____
	Phone _____
	Your Call sign _____
	Your Signature _____

Make check or money order payable to:

The Beaver Valley Amateur Radio Association, P.O. Box 424

South Heights, Pa 15081

# Hamfests & General Announcements



Two Rivers Amateur Radio Club Inc. of McKeesport PA  
P.O. Box 225  
Greenock, PA 15047

Web Site: "www.trarc.net"  
Hamfest Email: "n3lqc@comcast.net"  
Amateur Exams: "veteam@trarc.net"  
General Information: "information@trarc.net"



## 46th ANNUAL HAMFEST/COMPUTER SHOW



Sunday April 23, 2017 8 am – 2 pm

THE BOSTON SPECTRUM-- 6001 SMITHFIELD ST. – BOSTON, PA 15135

["www.bostonspectrum.com"](http://www.bostonspectrum.com)

(General Location: Pittsburgh, PA Southern Suburbs)

"The Boston Spectrum" is located off of PA Route 48 near the city of McKeesport, PA.

Landmarks Include: The "Boston Bridge" and the "Yough River Trail"

GPS Coordinates: 403137 deg North—79.822 deg West

Amateur Radio Directions: 146.73 MHz Repeater – Mobile Check in: 146.52 MHz

**\*\* Admission \$5.00 \*\***

### \* Main Prizes \*

1. YAESU FT-450D HF/50 100W TRANSCEIVER
2. YAESU FT-2900R 2METER 75W FM TRANSCEIVER
3. YAESU FTM-3200DR 2MTER 65W FM/C4FM DIGITAL TRANSCEIVER
4. RASPBERRY PI3 COMPUTER WITH CASE

MORE PRIZES TO BE ANNOUNCED AT THE SHOW

HOURLY DOOR PRIZES

50/50 DRAWING



**\* Large Exhibitor Area With Tables For Rent At \$10 each \***

Table Reservations: Phone: 724-242-5347 -- Email: "[n3lqc@comcast.net](mailto:n3lqc@comcast.net)"

Note: Exhibitor Setup Open on show day at 6am-Limited Exhibitor Setup on Saturday Evening

**\* Amateur Radio Exam Testing Available \***

Exam Registration: 412-751-9657 — Email: "[veteam@trarc.net](mailto:veteam@trarc.net)"

**\* Breakfast and Lunch Available \***



## Contest Corral – April 2017

Check for updates and a downloadable PDF version online at [www.arrl.org/contests](http://www.arrl.org/contests).

Refer to the contest websites for full rules, scoring information, operating periods or time limits, and log submission information.

Start Date-Time	Finish Date-Time	Bands	Contest Name	Mode	Exchange	Sponsor's Website
1 0000	2 2350	21	15-Meter SSTV Dash Contest	SSTV	RSV, mbr or serial	<a href="http://contests.wsstvc.org/rules">contests.wsstvc.org/rules</a>
1 0400	1 0800	7	LZ Open 40-Meter Sprint Contest	CW	Serial, serial rvd from last QSO	<a href="http://zopen.com/lzoo040/indexF.htm">zopen.com/lzoo040/indexF.htm</a>
1 1400	2 0200	3.5-UHF	Mississippi QSO Party	CW Ph Dig	RS(T), county or SPC	<a href="http://www.arrlmiss.org">www.arrlmiss.org</a>
1 1400	2 2000	1.8-UHF	Missouri QSO Party	CW Ph Dig	RS(T), county or SP or "DX"	<a href="http://www.w0ma.org">www.w0ma.org</a>
1 1400	2 2000	All	Texas State Parks on the Air	CW Ph Dig	RS(T), park abbreviation or SPC	<a href="http://www.txspota.org">www.txspota.org</a>
1 1500	2 1500	1.8-28	SP DX Contest	CW Ph	RS(T), province or serial	<a href="http://www.spdxcontest.pzk.org.pl">www.spdxcontest.pzk.org.pl</a>
1 1800	2 1800	3.5-28	EA RTTY Contest	Dig	RSQ, province or serial	<a href="http://concursos.ure.es/en">concursos.ure.es/en</a>
2 0000	2 0400	3.5-14	North American SSB Sprint Contest	Ph	Other's call, your call, serial, name, SPC	<a href="http://sabsprint.com/rules">sabsprint.com/rules</a>
2 1900	2 2030	3.5	RSGB RoLo SSB	Ph	RS, previous grid locator received	<a href="http://www.rsghoc.org/hf">www.rsghoc.org/hf</a>
3 1900	3 2030	3.5	RSGB 80-Meter Club Championship, CW	CW	RST, serial	<a href="http://www.rsghoc.org/hf">www.rsghoc.org/hf</a>
4 0100	4 0300	3.5-28	ARS Spartan Sprint	CW	RST, SPC, power	<a href="http://arsqp.blogspot.com">arsqp.blogspot.com</a>
5 2000	5 2100	3.5	UKEICC 80-Meter Contest	Ph	4-char grid square	<a href="http://www.ukaicc.com">www.ukaicc.com</a>
6 1700	6 2000	3.5	SARL 80-Meter QSO Party	Ph	RS, serial, grid locator	<a href="http://www.sarl.org.za">www.sarl.org.za</a>
6 1700	6 2100	28	NRAU 10-Meter Activity Contest	CW Ph Dig	RS(T), 6-char grid square	<a href="http://www.nrau.net">www.nrau.net</a>
8 0700	9 1300	1.8-28	JIDX CW Contest	CW	RST, prefecture or CQ zone	<a href="http://jidx.org/jidxrule-e.html">jidx.org/jidxrule-e.html</a>
8 1000	9 0400	14	PODXS 070 Club PSK 31 Contest	Dig	SPC, mbr or name	<a href="http://www.podxs070.com">www.podxs070.com</a>
8 1200	9 1200	1.8-28	OKCOM DX Contest, SSB	Ph	RS, district code or serial	<a href="http://okomdx.crk.cz">okomdx.crk.cz</a>
8 1200	9 2350	1.8-50	SKCC Weekend Sprintathon	CW	RST, SPC, name, mbr or "none"	<a href="http://www.skccgroup.com">www.skccgroup.com</a>
8 1200	9 2350	1.8-28	QRP ARCI Spring QSO Party	CW	RS, SPC, mbr or power	<a href="http://qparci.org">qparci.org</a>
8 1400	9 0200	1.8-50	New Mexico QSO Party	CW Ph Dig	Name, county or SPC	<a href="http://www.newmexicoqsoparty.org">www.newmexicoqsoparty.org</a>
8 1800	9 2350	1.8-50	Georgia QSO Party	CW Ph Dig	RST, county or SPC	<a href="http://www.georgiaqsoparty.org">www.georgiaqsoparty.org</a>
8 2100	9 2100	1.8-28	Yuri Gagarin International DX Contest	CW	RST, ITU zone	<a href="http://gc.qst.ru/en/section/32">gc.qst.ru/en/section/32</a>
9 1300	9 1900	3.5-7	International Vintage Contest HF	CW Ph	RS(T), 4-char grid	<a href="http://contestsVintage.beqworld.it">contestsVintage.beqworld.it</a>
9 1500	9 1700	3.5	Hungarian Straight Key Contest	CW	RST, serial, power code	<a href="http://hskc.h8kz.com">hskc.h8kz.com</a>
12 0030	12 0230	1.8	NAQCC CW Sprint	CW	RST, SPC, mbr or power	<a href="http://naqcc.info">naqcc.info</a>
12 1900	12 2030	3.5	RSGB 80-Meter Club Championship, SSB	Ph	RS, serial	<a href="http://www.rsghoc.org/hf">www.rsghoc.org/hf</a>
14 2100	15 2100	1.8-28	Holyland DX Contest	CW Ph Dig	RS(T), 4X area or serial	<a href="http://iare.org/iarc/holylandContest">iare.org/iarc/holylandContest</a>
15 0500	15 0850	3.5-7	ES Open HF Championship	CW Ph	RS(T), serial	<a href="http://www.orcu.es">www.orcu.es</a>
15 0800	16 0650	3.5-28	Worked All Provinces of China	CW Ph	RS(T), Province or serial	<a href="http://www.mulandxc.org/438">www.mulandxc.org/438</a>
15 1200	16 1150	1.8-28	YU DX Contest	CW	RST, serial	<a href="http://yudx.yurises.org.rs/2017">yudx.yurises.org.rs/2017</a>
15 1200	16 2350	3.5-28	CQ Manchester Mineira DX Contest	CW	RST, continent, category code	<a href="http://www.cqmandx.com/rules">www.cqmandx.com/rules</a>
15 1800	16 0400	3.5-28	Michigan QSO Party	CW Ph	Serial, county or SPC	<a href="http://www.miqp.org/Rules.htm">www.miqp.org/Rules.htm</a>
15 1700	16 1300	3.5-28	EA-QRP CW Contest	CW	RST, category code, "M" if member	<a href="http://www.eaqpp.com">www.eaqpp.com</a>
15 1800	15 2150	1.8-28	Fold Hill Sprint	Dig	RST, mbr, QTH, grid	<a href="http://sites.google.com/site/foldhillclub">sites.google.com/site/foldhillclub</a>
15 1800	16 1800	1.8-144	Ontario QSO Party	CW Ph	RS(T), county or SPC	<a href="http://www.v30co.com/ogp">www.v30co.com/ogp</a>
15 1800	16 1800	1.8-144	North Dakota QSO Party	CW Ph Dig	RS(T), county or SPC	<a href="http://wind.com">wind.com</a>
16 1200	16 2200	3.5-14	WAB 3.5/7/14 MHz Data Modus	Dig	RS, serial, WAB square or country	<a href="http://wab.internip.net">wab.internip.net</a>
16 1800	16 2350	3.5-50	ARRL Rookie Roundup, SSB	Ph	Name, 2-digit year first licensed, SPC	<a href="http://www.arrl.org/rookie-roundup">www.arrl.org/rookie-roundup</a>
17 0200	17 0400	1.8-28	Run for the Bacon QRP Contest	CW	RST, SPC, mbr or power	<a href="http://qpptest.com/pigrun">qpptest.com/pigrun</a>
17 1400	17 2000	1.8-28	Low Power Spring Sprint	CW	RST, 4-char grid, power category	<a href="http://www.homocopia.com/contests/allowpower/springprint2016.pdf">www.homocopia.com/contests/allowpower/springprint2016.pdf</a>
17 1900	17 2300	144	144 MHz Spring Sprint	CW Ph Dig	4-char grid square	<a href="http://sites.google.com/site/springvhfupprints">sites.google.com/site/springvhfupprints</a>
22 0800	22 1800	3.5-28	QRP to the Field	CW Ph	RST, SPC, name	<a href="http://www.zianet.com/qp">www.zianet.com/qp</a>
22 1200	23 1200	3.5-28	SP DX RTTY Contest	Dig	RST, province or serial	<a href="http://pkvrg.org/strona.spdxrttyen.html">pkvrg.org/strona.spdxrttyen.html</a>
22 1200	23 1200	3.5-28	UKEI DX Contest, CW	CW	RST, serial, district code (if any)	<a href="http://www.ukaicc.com">www.ukaicc.com</a>
22 1400	23 2300	1.8-UHF	Nebraska QSO Party	CW Ph Dig	RS(T), county or SPC	<a href="http://qcwa.org/chapter025.htm">qcwa.org/chapter025.htm</a>
23 1700	23 2050	3.5-28	BARIG Sprint 75	Dig	Serial	<a href="http://www.barig.org.uk">www.barig.org.uk</a>
25 1900	25 2300	222	222 MHz Spring Sprint	CW Ph Dig	6-char grid square	<a href="http://sites.google.com/site/springvhfupprints">sites.google.com/site/springvhfupprints</a>
26 0000	26 0200	1.8-28	SKCC Sprint	CW	RST, SPC, name, mbr or power	<a href="http://www.skccgroup.com">www.skccgroup.com</a>
26 2000	26 2100	3.5	UKEICC 80-Meter Contest	CW	4-char grid square	<a href="http://www.ukaicc.com">www.ukaicc.com</a>
27 1900	27 2030	3.5	RSGB 80-Meter Club Championship, Data	Dig	RST, serial	<a href="http://www.rsghoc.org/hf">www.rsghoc.org/hf</a>
29 0000	29 2350	1.8-50	Fold Hill Sprint	Dig	RST, mbr, QTH, grid	<a href="http://sites.google.com/site/foldhillclub">sites.google.com/site/foldhillclub</a>
29 0001	30 2350	28	10-10 International Spring Contest, Digital	Dig	Name, mbr or "0," SPC	<a href="http://www.ten-ten.org">www.ten-ten.org</a>
29 1300	30 1250	1.8-28	Halvata Contest	CW Ph Dig	RS(T), serial, 2-letter canton (if any)	<a href="http://www.uska.ch">www.uska.ch</a>
29 1600	30 2150	7-28	Florida QSO Party	CW Ph	RS(T), county or SPC	<a href="http://www.floridaqsoparty.org">www.floridaqsoparty.org</a>

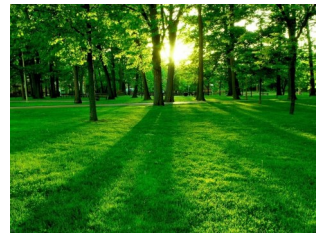
All dates refer to UTC and may be different from calendar dates in North America. Times given as AM or PM are local times and dates. No contest activity occurs on the 60-, 30-, 17-, and 12-meter bands. Mbr = Membership number. Serial = Sequential number of the contact. S/P/C = State, Province, DXCC Entity. XE = Mexican state. Data for Contest Corral is maintained on the WA7BNM Contest Calendar at [www.homocopia.com/contestcal](http://www.homocopia.com/contestcal) and is extracted for publication in QST 2 months prior to the month of the contest. ARRL gratefully acknowledges the support of Bruce Horn, WA7BNM, in providing this service. Listings in blue indicate contests sponsored by ARRL or NCJ. The latest time to make a valid contest QSO is the minute listed in the "Finish Time" column.

# Bits and Pieces

This month I introduce Pam Hanna, WB3BHJ as the “Interview with a Ham” amateur radio operator. I met her after I had given her husband some fun spirited teasing about his driving a certain brand of pick-up to a local Hamfest. I let him know I was feeling sorry for his choice of the brand. I would have pulled him up the hill. Pam is quiet. Don’t let that fool you, she is full of surprises. She defended their truck and Dick with some fun teasing right back at me. I immediately uncovered a playfully mischievous rascal. I think she has to be, she is married to Dick Hanna! They are a fun couple to be associated with. In the few years I have known them both, I have enjoyed their kindness, humor and frisky merriment. I am glad to be a member of the BVARA club with such fun and quality friends.



As I write this commentary on my visit with Pam I struggle to find the words. I feel like a painter wanting to paint grass and I don’t have the correct color paint. I am reminded that blue and yellow make green. I will mix the words to greenly describe what I am trying to convey to the readers of this BVARA Newsletter.



During my interview with Pam Hanna I think she really hit on something about Ham Radio. She talked about her desire to get young people interested with amateur radio. She also fed into my love of radio by her story of being a young girl listening to shortwave on their Dumont Console TV. The way Pam talked I knew she too had a love of radio. Her curiosity and perception of the magic of how it worked was evident. I could tell she enjoyed the charm of radio. As we talked more I could tell she found radio a love she would have all her life. I had an epiphany. I think Pam defined it for me. You don’t have to get young people interested in radio. You need to feed their curiosity, share the charm and feed the magic of radio that a young person already possesses.

She shared how she likes to visit when “on air”; the passing antenna-radio combination used and signal report was just not enough for her. Pam said she doesn’t spend much time on the air lately. The face-to-face QSOs at lunches, breakfasts and hamfests (as she put it) was her very special Amateur Radio complement supplement. You should make it a point to meet Pam and Dick Hanna too.

The weather is getting nicer and will continue to get warmer. Many of us will be improving our radio stations and performing maintenance. As always, I encourage you to be safe in **all** that you do. Be safe especially in all of your radio pursuits. Please think before acting. Planning is everything. The few minutes used to analyze a situation could be the difference between a great radio day and an accident.



As always, be safe.

73 KC3BXC

# Interview with a Ham

*Name :* Pam Hanna

*Call sign and license class:* WB3BHH General

*Year of first FCC License :* 1976

*Did you ever make a crystal radio?* No

*Did you ever listen to short wave radio?* Yes, We had an old console TV, that Dumont had TV starting at channel 1 and could tune shortwave too. This may have uncovered the magic of radio for me.

*Did you ever use CB radio?* No

*How did you get interested in Ham Radio?* It was self-defense. If I wanted to talk to my husband it would have to be with a microphone in my hand.

*Did you ever build a Ham Radio?* No

*What was your first radio?* A Drake TR33C handy talkie, the size of a cement block.

*What was your first antenna?* A rubber duck.

*What is your current antenna & radio?* Dipole and a vertical tribander. Baofeng 2M/440cm.

*What is your favorite mode to operate?* Phone

*Your most memorable contact?* It was in 1970 during the Breakfasters net on the Triple "A" repeater, I talked to some friends from our Camp in Sigel Pennsylvania.

*What was your most fun contact?* The idea I could talk to friends so far a way on 2 meters during the Breakfasters net was really fun.

*What part of the hobby interests you the most? (field day, home brewing, contesting, Hamfests, restoring old radios)* I think seeing friends at Hamfests. I also enjoy club meetings, breakfasts and lunch with the Roosters group.

*Have you ever been on a fox hunt?* Yes, sort of. Twenty years ago an emergency aircraft beacon was activated. We found the beacon and it turned out to be fine. The beacon had gone off, unbeknown to the pilot, from a hard landing. Thankfully there was no accident, emergency or crash.

*Do you use a logging program? (what is it)* No

*Would you purchase a Software Defined Radio?* It's a big NO for me. I enjoy the charm of old radio.

*Do you use automation with your Ham Radio?* No

*If you had a magic wand and could change Ham radio what would you change and why?* I would like to instill the magic and mystique of radio in young people.

*Where do you see ham radio in ten years?* I think digital radio will continue to grow. I wonder if there will be a ham radio implant? A Chip? Maybe in your glasses... a kind of ham skype in your glasses frame.

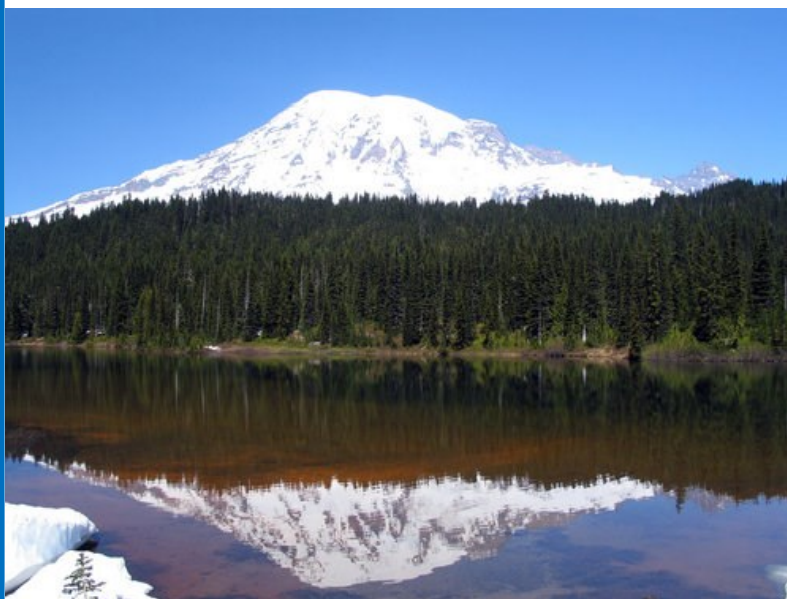
# It's Your Dime

Remember back when you could communicate by “Pay Phone” for ten cents? This page is for anyone who wants to communicate with the BVARA community and beyond. Please send me your article that you would like posted on this page. Please, only topics and language in good taste. As the editor I reserve the option to post it or ignore it. Send your dime to me at: [kc3bxc.73@gmail.com](mailto:kc3bxc.73@gmail.com)



## ARRL moving to West Coast ?

The announcement of the ARRL moving to the west coast is a little hard to accept. The announcement came from ARRL representative Mr. Appreel F. Oolls. The move to Mount Olympia Washington is very hard for me to accept. During the move most contact with the ARRL will have to wait. They will be busy with the move and all correspondence will be routed through a



very small temporary office. Many of the current ARRL representatives are not willing to move to the west coast. New representatives will have to be located, elected and/or appointed once the move is in full swing.

The second difficulty comes as Mt. Olympia is very far from the nearest road. A treacherous helicopter flight is the quickest way to arrive at Mt. Olym-

# It's Your Dime



pia. Flying/landing is made difficult because of the mountain being shrouded in cloud cover most of the time. Flying is very costly. Unicorn travel has proven best over the years to reach the mountain peak. Packing everything in by unicorn will be less expensive but more time consuming than helicopter. The

mountain is very high and the trail extremely difficult. Regular horses, mules or donkeys are not capable of such high altitude packing. The altitude and dangerous trail are best left to unicorn laden packing. Unicorns are the only safe mode of travel. Locating "Mount Olympia" is a difficult task. Mount Rainier is easy to find, it is south east of the city of Olympia Washington and can be seen by the naked eye most days. Unicorns seem to have a sixth sense when it comes to locating Mt Olympia.



Favorable attributes of the mountain location start with great grounding potential. The mountain many millennia ago was ocean that is now pushed up high. Deep sand/salt deposits make grounding almost as good as salty ocean water. The high altitude makes for excellent antenna propagation height. Almost any antenna will do. The weather on top of Mount Olympia is very favorable. It rains less than an inch of precipitation a year at the extreme altitude. The clouds drop most of their moisture on Aberdeen, Elma and Olympia. The dry mountain top is excellent for radio related endeavors/equipment. Corrosion is almost nonexistent.

Because of the difficulty finding Mount Olympia, mail delivery by pack animal, no phone service, electric only by generator, finding the elusive Unicorn livery, and other considerations I hope the ARRL stays right where it is located now.



73 KC3BXC

# Some Interesting Links



**For the month of April, I strayed from my normal Ham/radio themed sites. I think you will find these “New for 2017” tech videos informative, fun and interesting.**

High tech airplane

[https://www.youtube.com/watch?v=n\\_ob-5eC8uw](https://www.youtube.com/watch?v=n_ob-5eC8uw)

New one language

<https://www.youtube.com/watch?v=DKysi4eJ0Sw>

New Nome technology

<https://www.youtube.com/watch?v=vNOllWX-2aE>

New wind tech

<https://www.youtube.com/watch?v=QAwL005nXe0>

New enhancement for virtual goggles

[https://www.youtube.com/watch?v=3MA6\\_21nka8](https://www.youtube.com/watch?v=3MA6_21nka8)

New unlimited food delivery

[https://www.youtube.com/watch?v=3MA6\\_21nka8](https://www.youtube.com/watch?v=3MA6_21nka8)

New Honda car horn emojis

<https://www.youtube.com/watch?v=B1qmmf6cYow>



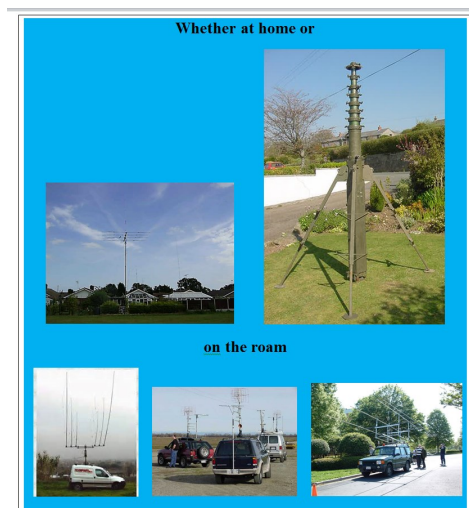
# For All Radio Operators

\* In **April** there are many State/Province QSO contests including Michigan, Ontario, North Dakota, Nebraska, and Florida. Click on the link below for more information.

<http://www.hornucopia.com/contestcal/stateparties.html>

\* The Tri-State Radio Fest will be held on **Sunday, April 23rd, 2017** at the Center Stage Banquet Hall on Old Broadhead Road in Monaca. This event features an indoor flea market, an auction of antique radios, and a contest to vote on the best Deco-Styled Radios that will be on display. This event is sponsored by the Pittsburgh Antique Radio Society (PARS). You can click the link below for more information.

<http://www.pittantiqueradios.org/TriStateRadioFest2017>



## The Amateur's Code

**CONSIDERATE** ...never knowingly operates in such a way as to lessen the pleasure of others.

**LOYAL** ...offers loyalty, encouragement and support to other amateurs, local clubs, and the American Radio Relay League, through which Amateur Radio in the United States is represented nationally and internationally.

**PROGRESSIVE** ...with knowledge abreast of science, a well-built and efficient station and operation above reproach.

**FRIENDLY** ...slow and patient operating when requested; friendly advice and counsel to the beginner; kindly assistance, cooperation and consideration for the interests of others. These are the hallmarks of the amateur spirit.

**BALANCED** ...radio is an avocation, never interfering with duties owed to family, job, school or community.

**PATRIOTIC** ...station and skill always ready for service to country and community.