

THE eQRM



BVARA Corn Roast August 15, 2015

We will be at Shelter 4 in Economy Boro Park.

August 2015
THE eQRM

On the Cover : The BVARA will be having a Corn Roast, see page four. There will not be a club meeting or any testing for the month of August. Regular meeting activities will resume in September.

3 - 4
Bulletins
Hamfests and general
announcements

9 & 10
Who We Are
Club officers, meetings and
membership information

5 & 6
This Month
VE testing, Breakfast

11
Bits and Pieces
Interesting extras

7
Propagation Charts
Propagation charts for
the East Coast

12 & 13
Radio Sport
RTTY Rookie Roundup
10 GHz and Up Contest

8
VE Test Results
New Hams and Upgrades

14
Interesting Links

And more

CHECK IN TO THE NETS

Wednesday 2 Meter

8:30PM on 145.310 MHz

Wednesday 10 Meter

9:00PM on 28.470 MHz

The eQRM is a publication of the Beaver Valley Amateur Radio Association (BVARA) and is Copyright 2010 - 2015. All material presented in this publication is not necessarily the views of the American Radio Relay League (ARRL), BVARA, or members of the said organizations. If you would like to contact the editor of the eQRM, please email David at kc3bxc.73@gmail.com. Please visit us online at www.W3SGJ.org. To subscribe to our newsletter, please visit W3SGJ.org/newsletter.php



Skyview Radio Society annual Swap N Shop!

Sunday, August 30th 2015 - The best little hamfest in the world!

ARRL Western PA Section Convention! - Location: Skyview Radio Society clubhouse grounds. 2335 Turkey Ridge Road. New Kensington, PA 15068. Talk-in: 146.640- 131.8pl.

Contact: Pat Cancro, NK3P jpc2@psu.edu - Breakfasts and lunches served

DIRECTIONS TO SKYVIEW RADIO SOCIETY

GPS = 40° 31' 03" N / 79° 40' 37" W

From Apollo / Leechburg: Take rt. 66 S to rt. 380. Take 380 W to rt. 366. Take rt. 366 W (toward New Kensington) to the end of the 4 lane. Go ¼ mile past the end of the 4 lane. Turn right on Whitten Hollow Road. Go about ½ mile to first stop sign. Turn right on Turkey Ridge Road. Go about ½ mile to top of hill. Skyview is on the left.

From New Kensington: Take rt. 366 E. Go about 5 miles from the Parnassas area. Look for the Hannan Building on the left. Go about 100 yards past the Hannan Building (If you get to the 4 lane, you went too far). Turn left on Whitten Hollow Road. Go about ½ mile to first stop sign. Turn right on Turkey Ridge Road. Go about ½ mile to top of hill. Skyview is on the left.

From Monroeville / Parkway: Take rt. 286 E to rt. 380 E. Take rt. 380 E to rt. 366. Take rt. 366 W (toward New Kensington) to the end of the 4 lane. Go ¼ mile past the end of the 4 lane. Turn right on Whitten Hollow Road. Go about ½ mile to first stop sign. Turn right on Turkey Ridge Road. Go about ½ mile to top of hill. Skyview is on the left.

From Greensburg: Take rt. 66 N to rt. 366. Take rt. 366 W (toward New Kensington). Cross over route 380 and then go to the end of the 4 lane. Go ¼ mile past the end of the 4 lane. Turn right on Whitten Hollow Road. Go about ½ mile to first stop sign. Turn right on Turkey Ridge Road. Go about ½ mile to top of hill. Skyview is on the left.

Bulletins

BVARA Corn Roast



Join our Beaver Valley Amateur Radio Association celebration of summer!

When: Saturday, August 15th, 2015 at 5:30 pm

Where: Old Economy Park, Shelter 4 (enter the park and turn right at the swimming pool)

Who: All BVARA members and their families and invited guests

What: Club furnishes the corn, hot dogs, and hamburgers - please bring a covered dish or a home-baked dessert and your beverages. All home-brought foods are optional, but home-made extras add to the deliciousness. Coffee, iced tea/canned pop and bottled water will be available.

RSVP: For planning purposes, we need a count by August 1st of how many people will be there, so please:

Email your response to mnrtrunick@yahoo.com or k3som@arrl.net or

- Call Norm, K3NJT at (724) 728-3214 or
- Call Rich, K3SOM at (724) 847-0610

This Month

This month's BVARA Club feature presentation:

This Month: Corn Roast

Speaker: None

Topic: We will have to wait till next month, September.

What will the topic be? I can hardly wait !



More this Month

VE TEST SESSION

Beaver County Emergency Services Center
351 14th Street
Ambridge, PA 15003

Tests begin 5PM Thursday, September 10th (walk-ins allowed).

All classes of amateur radio license tests will be administered.

*** No testing for the month of August ***

ALL candidates MUST bring ALL of the following:

1. 2 forms of I.D. - one MUST be a photo I.D.
2. A pencil AND a pen with blue or black ink.
3. The original AND a photocopy of any valid ham license.
4. The original AND a photocopy of any C.S.C.E.
5. The test fee of \$15 - cash, check, or money order.

For more information, contact :
Rich Soltesz, K3SOM
(724) 847-0610
k3som@arrl.net



WEEKLY

Thursday Morning Breakfast

The BVARA meets every Thursday at Steak 'n Shake in Center Township, by the Beaver Valley Mall, at 10:00 AM. All area amateurs are encouraged to come join us at our Thursday morning breakfast.

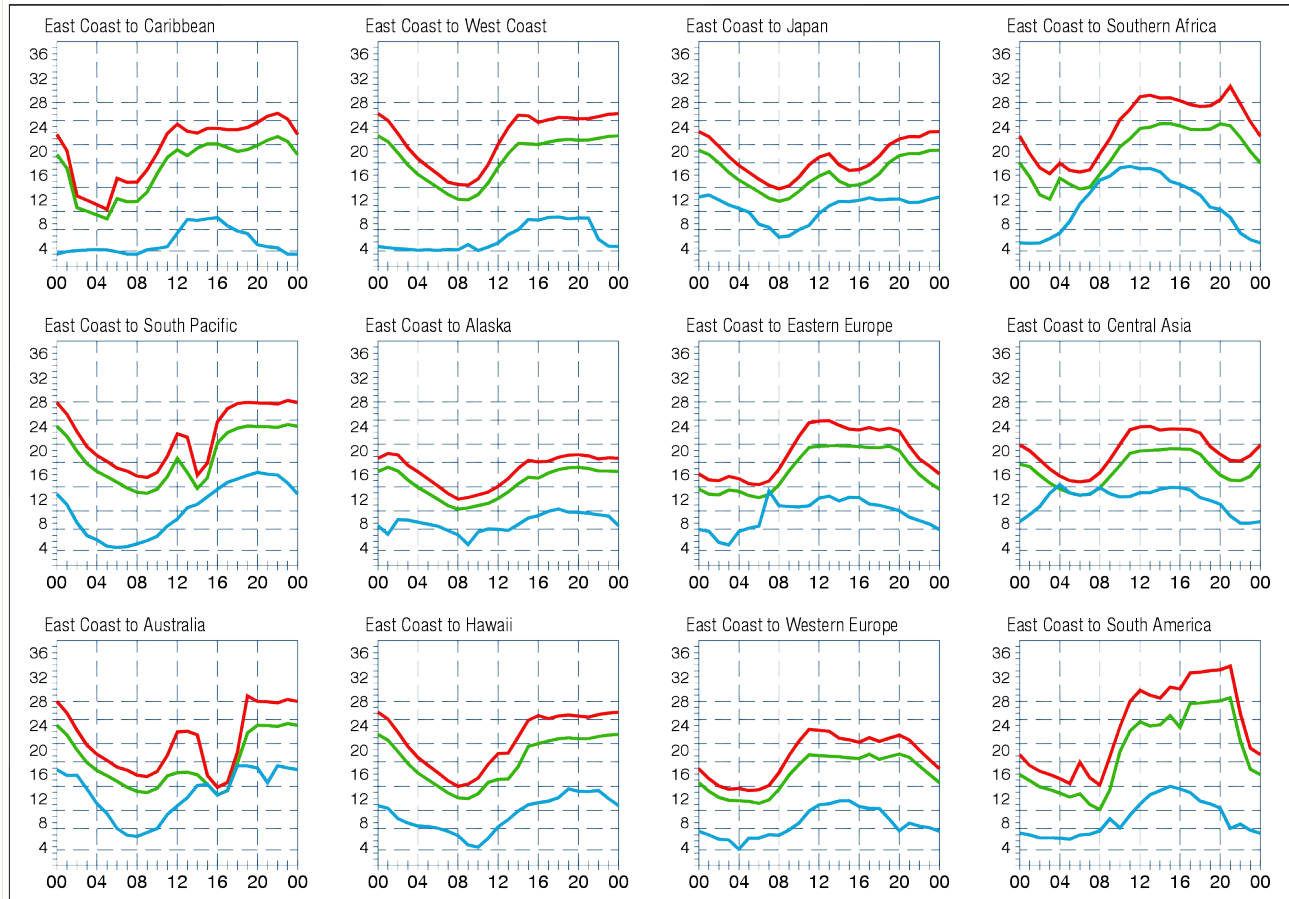


See you at



Propagation Charts

From the ARRL



When are the bands open? These charts, generated using CAPman, show probabilities for average HF propagation in the month of **August** for the paths indicated. The horizontal axes show Coordinated Universal Time (UTC), and the vertical axes frequency in MHz. On 10% of the days of this period, the highest frequencies propagated will be at least as high as the upper red curves (HPF, highest possible frequency) and on 50% of the days they will be at least as high as the green curves (MUF, classical maximum usable frequency). The blue curves show the lowest usable frequency (LUF) for a 1500-W CW transmitter. For SSB or a lower transmitter power, the LUF will be somewhat higher than the blue curves indicate. See Oct 1994 *QST*, pp 27-30, and Feb 1995 *QST*, pp 34-36, for more details. The predictions assume an observed 2800-MHz solar flux value of 106. This is a **Medium** level of solar activity. See the detailed propagation tables on *The ARRL Antenna Book CD-ROM*.

PROPAGATION

The East Coast propagation chart listed above is for August 2015. If you would like more information on how to read these charts, or for more information on propagation in general, please visit <http://arrl.org/propagation>

RACES / ARES

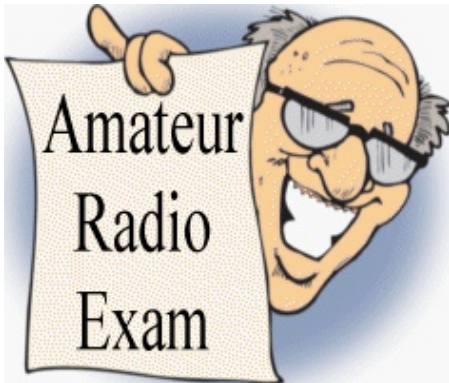
eQRM Urges All County Hams to Participate

As a matter of editorial opinion, the eQRM urges all Beaver County licensed amateurs to participate in the County's RACES and ARES programs.

Any Beaver County Amateur that is interested in participating in the RACES/ARES programs can do so by checking into the Beaver County Public Service Net which meets every Monday evening at 8:30 PM local time on the N3TN 146.850 MHz repeater (131.8 PL)



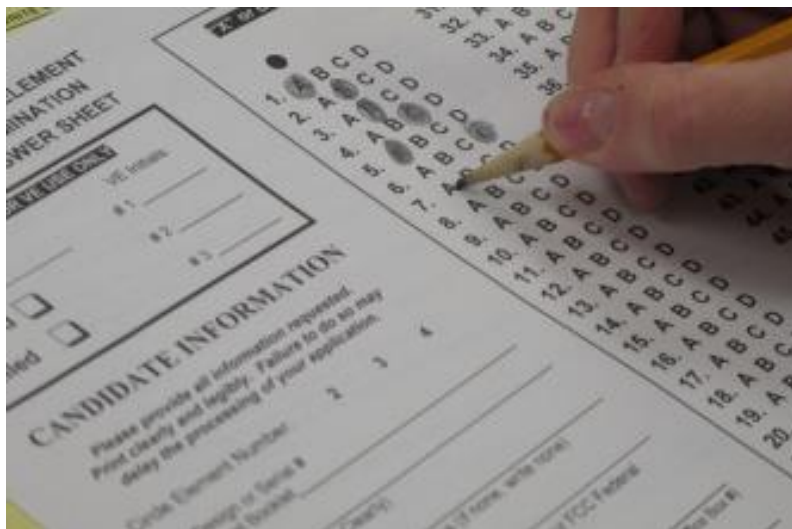
New License and Upgrades BVARA VE Testing



The BVARA would like to congratulate and acknowledge:

Bob Punzell - KC3FGM of Ellwood City, PA successfully completed his exam for Technician Class Amateur Radio at our VE Test Session.

Tom Beach - KC3FGN of Harmony, PA successfully completed his exams for both Technician and General Class Amateur Radio at our VE Test Session.



Who We Are

Membership Information and Club Officers



2015 BVARA OFFICERS

President: Jack Spencer, KZ3Z
Vice President: Dick Hanna, K3VYY
2nd Vice Pres.: Rob Miller, N3OJL
Treasurer: Pam Spencer, W3PMS
Secretary: Norm Trunick, K3NJT
Director: Bob Winkle, N3AZZ
Director: Jeff Waite, K3SLK
Trustee: Rich Soltesz, K3SOM

MONTHLY MEETINGS

E-Board meetings are now held the Saturday before the monthly club meeting.
VE testing begins at 5:00.
Regular meetings are at 6:30.

All meetings are held at
Beaver County
Emergency Services Center
351 14th Street
Ambridge, PA 15003
on the second Thursday of every month
(unless otherwise stated).

MEETING DATES 2015

Aug 15 Corn Roast no meeting
Sept 10
Oct 8
Nov 12
Dec 07 Saturday
Club Christmas Party

Jan 14 2016
Feb 11
Mar 10
Apr 14
May 12
Jun 09
Jul 14



Membership Information

By becoming a Member of the BVARA, You can help secure the future of Amateur Radio in Beaver County. Additionally, the BVARA receives a portion of each ARRL Membership you purchase!

Join the BVARA and ARRL

Sign up for:	Price	Quantity
<input type="checkbox"/> BVARA FULL MEMBERSHIP	20.00	_____
<input type="checkbox"/> BVARA STUDENT MEMBERSHIP	15.00	_____
<input type="checkbox"/> BVARA ASSOCIATE MEMBERSHIP	10.00	_____
<input type="checkbox"/> CHILD UNDER 21 IN HOME	5.00	_____
<input type="checkbox"/> ONE YEAR ARRL MEMBERSHIP	39.00	_____
	DONATION	_____
ARRL MEMBER ? YES NO	TOTAL	_____

Your license class (If you have one)

- Technician
 - General
 - Advanced
 - Extra
- Name _____
- Address _____
- _____
- Email _____
- Phone _____

Your Call sign _____ Exp.date _____

Your Signature _____

Make check or money order payable to:
The Beaver Valley Amateur Radio Association, P.O. Box 424
South Heights, Pa 15081

Bits and Pieces

August is here! Where did the Summer go?

Radio Repair



Safety! Safety! Safety!

This month I think about the treasures purchased at this summer's Ham fests. Did you purchase a boat anchor or a newer radio that needs some TLC? Do you need to find the schematic for it. Do you need a special piece of test equipment, maybe some contact cleaner? How about a tube tester... The cold of winter will be coming all too soon. Summer is not over yet so there is still time to visit a few Hamfests. This could be a good time to look for a winter project or the test equipment and supplies you will need. Now is a great time to consider these things.



When you do start to repair that radio treasure, think safety. Do not assume anything. Do some things first before you power it up. Inspect it carefully. Think safety. Don't be afraid to ask a knowledgeable Ham for some advice on your new treasure. Be safe. Did someone get into the radio and replace something with the wrong value component, is the wiring safe? That radio you are reaching into can hold an electric charge for a long time, even though you didn't apply any power to it. Keep one hand in your pocket every time you reach inside your "under repair treasure". This may be a good time to join a radio club. There are many folks that could be valuable as you repair your treasure. They may know of the particular radio, maybe they know of a supply company with items you will need, sometimes it is just enjoyable to visit about Radio with someone who enjoys it like you... good luck in your radio pursuits. Above all be safe in all your radio adventures. **Safety, safety, safety.**



Radio Sport

- August 2015 Contest -

RTTY Rookie Roundup

The Rookie Roundup returns to RTTY on Sunday, August 16, 1800 UTC through 2359 UTC. This is a great opportunity for new operators to get on the air and learn the skills of contesting.

"Old Timers" should also take note of this event. Consider opening your station up to a rookie (or two) and become an elmer. Remember, the more operators are on the air, the more fun the 'Roundup will be for everyone.

Be sure to read the rules before the event. It is also helpful to be familiar with the logging and submission processes ahead of time. You're in the right place; browse this page for information and tips on operating the Rookie Roundup. We hope to hear you on the air!

Mission: To encourage newly-licensed operators ("Rookies") in North America (including territories and possessions) to operate on the HF bands and experience competitive Amateur Radio operating. Experienced operators ("Non-Rookies") are strongly encouraged to participate and help new operators – either on the air or in person.

Objective: Rookies exchange information with as many other stations as possible on the 80, 40, 20, 15, and 10 meter HF bands.

Radio Sport

- August 2015 Contest -

10 GHz and Up

The objective of 10 GHz and Up is for North American amateurs work as many amateur stations in as many different locations as possible in North America on bands from 10-GHz through Light. Amateurs are encouraged to operate from more than one location during this event. See the detailed rules for restrictions.

Third full weekend of August and September. (August 15-16, 2015 and September 19-20, 2015). Operations may take place for 24 hours total on each contest weekend. Each weekend begins at 6:00 AM local Saturday though 12:00 midnight local Sunday.

All authorized microwave bands from 10 GHz up through Light.

For more information go to the ARRL web site with the Keywords: "contest calendar"

<http://www.arrl.org/contest-calendar>

Some Interesting Links

Western Historic Radio Museum <http://www.radioblvd.com/index.html>

Weather Underground <http://www.wunderground.com/radar/station.asp?ID=PBZ19>

Rotor Parts <http://www.rotordoc.com/>

Space Weather <http://www.spaceweather.com/>

eHam Radio Resource <http://www.eham.net/>

HamQTH <http://www.hamqth.com/about.php>

Ham Operator AI4FR http://www.ai4fr.com/main/page_ham_radio_ham_radio.html

Mods and Manuals <http://www.mods.dk/>

American Radio Relay League <http://www.arrl.org/home>
(ARRL)

Dr. Tamitha Skov Space Weather <http://spaceweather.tv/category/amateur-radio-resources/>
for Radio Amateurs

The Amateur's Code

CONSIDERATE ...never knowingly operates in such a way as to lessen the pleasure of others.

LOYAL ...offers loyalty, encouragement and support to other amateurs, local clubs, and the American Radio Relay League, through which Amateur Radio in the United States is represented nationally and internationally.

PROGRESSIVE ...with knowledge abreast of science, a well-built and efficient station and operation above reproach.

FRIENDLY ...slow and patient operating when requested; friendly advice and counsel to the beginner; kindly assistance, cooperation and consideration for the interests of others. These are the hallmarks of the amateur spirit.

BALANCED ...radio is an avocation, never interfering with duties owed to family, job, school or community.

PATRIOTIC ...station and skill always ready for service to country and community.