

# THE eQRM

AUGUST 2019

**BVARA's annual**

**Corn  
Roast**



The BVARA in Beaver County Pennsylvania

Beaver Valley Amateur Radio Association

W3SGJ

Repeater 145.310

PL 131.8

**On the Cover :** The BVARA will have our annual Corn Roast Saturday August 24, 2019 at the Economy Boro Park Shelter #01. You are invited to come too! See page 16 for details.

## Inside This Edition

Who We Are	3	Radio Sport	12
This Month	4	Bits and Pieces	13
Propagation	6	It's Your Dime	14
Get a License or Upgrade	7	Of interest to all	16
New License and Upgrades	8		
Membership	9		
Hamfests & General Announcements	10 & 11		

### Check into our nets

#### Wednesday 2 Meter

**8:30PM on 145.310 MHz PL 131.8**

#### Wednesday 10 Meter

**9:00PM on 28.470 MHz**

The eQRM is a publication of the Beaver Valley Amateur Radio Association (BVARA) and is Copyright 2010 - 2019. All material presented in this publication is not necessarily the views of the American Radio Relay League (ARRL), BVARA, or members of the said organizations. If you would like to contact the editor of the eQRM, please email David at [kc3bxc.73@gmail.com](mailto:kc3bxc.73@gmail.com). Please visit us online at [www.W3SGJ.org](http://www.W3SGJ.org). To subscribe to our newsletter, please visit [W3SGJ.org/newsletter.php](http://W3SGJ.org/newsletter.php)

# Who We Are

## 2019 BVARA OFFICERS

President: Jack Spencer, KZ3Z

Vice President: Dan Grazulis, KB3VSP

2nd Vice Pres.: Doug Hanna, N4YKQ

Treasurer: Pam Spencer, W3PMS

Secretary: Norm Trunick, K3NJT

Director: Tony Pavilonis, W6PEF

Director: Bob Winkle, N3AZZ

Trustee: Rich Soltesz, K3SOM



## MONTHLY MEETINGS

E-Board meetings are now held the Saturday before the monthly club meeting.

VE testing begins at 5:00 PM.

Regular meetings are at 6:30 PM

All meetings are held at the Beaver County Emergency Services Center  
351 14th Street  
Ambridge, PA 15003  
on the second Thursday of every month  
(unless otherwise stated).

### Club Meetings 2019

Aug 24 Corn Roast (no club meeting)

Sep 12

Oct 10

Nov 14

Dec 07 Christmas Party  
(no club meeting)

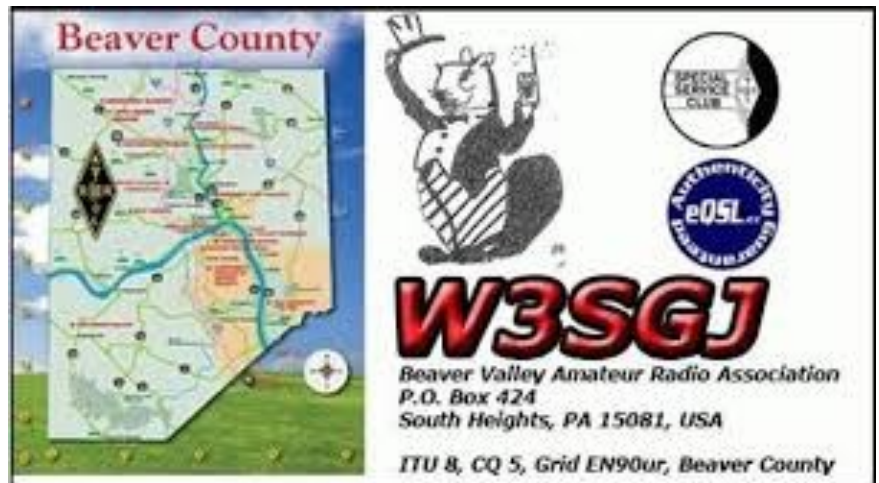
Jan 09 2020

Feb 13

Mar 12

Apr 08

May 14



# This Month

***No Club Meeting this month...***

*(We will resume regular club meetings in September.)*

We will be at the Economy Boro Park Saturday August 24 having a  
Corn Roast.

Please, come join us!  
(See page 16 for details.)



# More this Month

## Weekly

The Freedom Square Diner in Monaca has a great wait staff. Come let them take your order.

Thursday Morning Breakfast  
(or you can have lunch)



The BVARA meets every Thursday at the Freedom Square Diner in Center Township, just to the right of the Cinemark Center Township Marketplace at 09:30 AM. All radio amateurs and those interested in amateur radio are encouraged to come join us at our Thursday morning breakfast.

## See you Thursday at



The eQRM urges all Beaver County licensed amateurs to participate in the County's RACES and ARES programs.

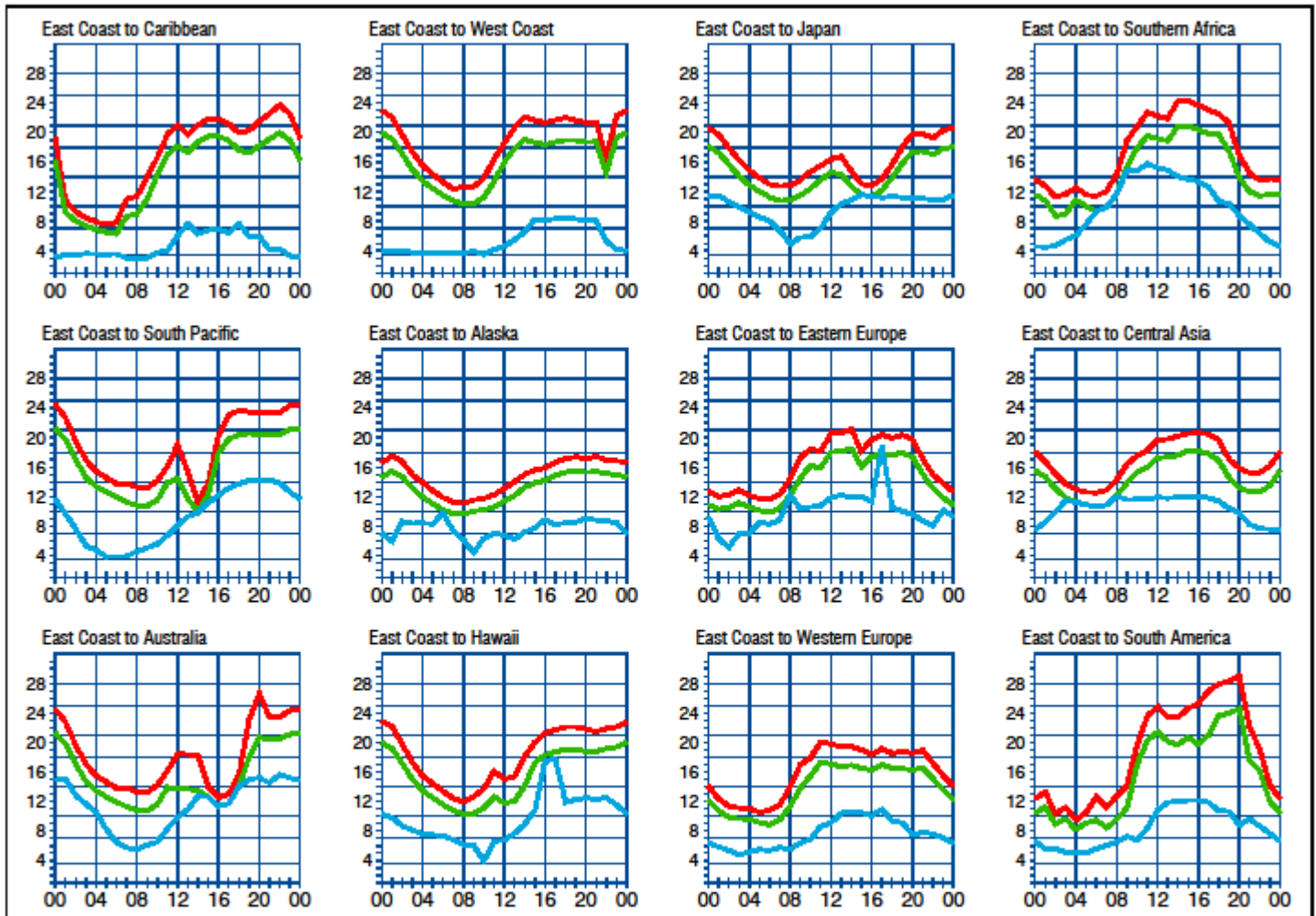
Any Beaver County Amateur that is interested in participating in the RACES/ARES programs can do so by checking into the Beaver County Public Service Net which meets every Monday evening at 8:30 PM local time on the N3TN 146.850 MHz repeater (131.8 PL)

RACES / ARES

The eQRM urges all county hams to participate.



# Propagation



**When are the bands open?** These charts, generated using CAPman, show probabilities for average HF propagation in the month of **August** for the paths indicated. The horizontal axes show Coordinated Universal Time (UTC), and the vertical axes frequency in MHz. On 10% of the days of this period, the highest frequencies propagated will be at least as high as the upper red curves (HUF, highest possible frequency) and on 50% of the days they will be at least as high as the green curves (MUF, classical maximum usable frequency). The blue curves show the lowest usable frequency (LUF) for a 1500-W CW transmitter. For SSB or a lower transmitter power, the LUF will be somewhat higher than the blue curves indicate. See Oct 1994 QST, pp 27-30, and Feb 1995 QST, pp 34-36, for more details. The predictions assume an observed 2800-MHz solar flux value of 68. This is a Very Low level of solar activity. See the detailed propagation tables on *The ARRL Antenna Book CD-ROM*.

**ARRL**  
The national association for  
**AMATEUR RADIO**

## PROPAGATION

The East Coast propagation chart listed here is for August 2019.

If you would like more information in general, please visit <http://www.arrl.org/propagation>

# Get your License or Upgrade

If you are interested in getting your first FCC license or upgrading your current amateur radio license, the Beaver Valley Amateur Radio Association holds VE Test sessions (Volunteer Examinations) the second Thursday of each month at the Nine One One center in Ambridge Pennsylvania prior to our BVARA Club meeting. If there is no meeting there is no test session. Please come take your test with us!

For more information, contact :  
Rich Soltesz, K3SOM  
(724) 847-0610  
k3som@arrl.net



## VE TEST SESSIONS

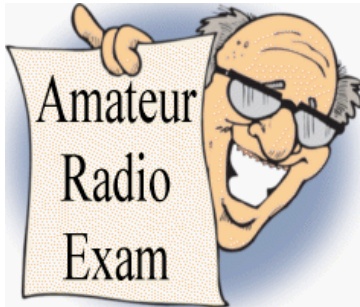
Beaver County Emergency Services Center 351 14th Street Ambridge, PA 15003.  
Tests begin promptly at 5 pm on the same day as BVARA Club Meetings  
(the second Thursday of the month).  
All classes of amateur radio license tests are administered.

ALL candidates MUST bring ALL of the following:

1. 2 forms of I.D. - one MUST be a photo I.D.
2. A pencil AND a pen with blue or black ink.
3. The original AND a photocopy of any valid ham license.
4. The original AND a photocopy of any C.S.C.E.
5. The test fee of \$15 - cash, check, or money order.

# New License and Upgrades

BVARA VE Testing



Here are the successful participants in our VE process the month of July:

Tim Donato – KC3NUC, Cranberry Twp, PA, Technician

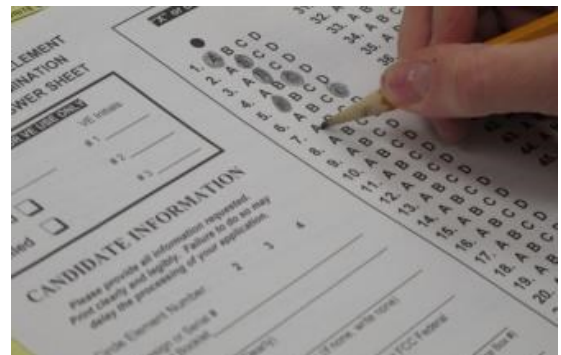
Mark Douglass – KC3NUD, Aliquippa, PA, Technician

Our next scheduled VE Testing Session will be on September 12th, 2019 at 5:00 PM at the 911 Center in Ambridge, PA.



Because there is no Club Meeting this month, there were/are no candidates tested for the August session of the BVARA. We'll all be at the Club Corn Roast. You are invited to come too, see page 16 for details!

\* Testing will resume at the September BVARA Club Meeting.





# Membership Information

By becoming a BVARA member you help secure the future of Amateur Radio in Beaver County. Additionally, the BVARA receives a portion of each ARRL

membership you purchase!

## Join the BVARA and ARRL

Sign up for:	Price	
<input type="checkbox"/> BVARA full membership	25.00	_____
<input type="checkbox"/> BVARA student membership	15.00	_____
<input type="checkbox"/> BVARA associate membership	10.00	_____
<input type="checkbox"/> BVARA Child under 21 at home membership	5.00	_____
<input type="checkbox"/> One year ARRL membership	49.00	_____
A Club Donation		_____
ARRL Member?    Yes    No	Total Enclosed	_____

Your License Class (If you have one.)

<input type="checkbox"/> Technician	Name _____
<input type="checkbox"/> General	Address _____
<input type="checkbox"/> Advanced	_____
<input type="checkbox"/> Extra Class	Email _____
	Phone _____
	Your Call sign _____
	Your Signature _____

Make check or money order payable to:

The Beaver Valley Amateur Radio Association, P.O. Box 424

South Heights, Pa 15081

## **DX Engineering Announces DXE Hamfest with Free Flea Market, August 10, 2019**

DX Engineering will be holding its first “DXE Hamfest” on Saturday, August 10, featuring a free flea market, giveaways, special discounts, a Go-Kit contest, and satellite operation demonstrations.

The event will take place in DX Engineering’s showroom inside the Summit Racing Retail Super Store in Tallmadge, Ohio near Akron from 9 am to noon. The free flea market will run from 8 am to noon in Summit Racing’s paved North parking lot.

Ham Radio enthusiasts can meet and mingle with colleagues from the region, sample the latest Amateur Radio gear, and get their technical questions answered by DX Engineering’s team of Elmers. Enjoy refreshments and these activities:

- \* Expert demonstrations on how to contact Amateur Radio satellites. Get your questions answered from an experienced satellite operator.
- \* Enter to win an ICOM IC-9700 VHF/UHF/1.2 GHz Transceiver.\*\*
- \* A \$100 DX Engineering Gift Card will be awarded to the club or individual who brings in the best functional Emergency Go-Kit. Please bring Go-Kits to the DX Engineering Showroom for judging.
- \* Big discounts on open-box Amateur Radio equipment.
- \* Save with Hamfest Specials on Amateur Radio gear from top manufacturers.
- \* Talk with ARRL representatives who will be hosting a booth at the Hamfest.
- \* There will be an ARRL DXCC Card Checker next to the ARRL Section Manager’s table inside.

Amateur operators are encouraged to check in to the N8DXE Repeater at 146.985 MHz—no PL tone required. More details on Hamfest will be announced on [DXEngineering.com](http://DXEngineering.com) and on the [DX Engineering Facebook](https://www.facebook.com/DXEngineering) page.

Questions? Contact [DXEngineering@DXEngineering.com](mailto:DXEngineering@DXEngineering.com).

*\* This is a family event for Amateur Radio enthusiasts. Appropriate behavior and acceptable Flea Market wares, please.*

*\* No firearms, ammunition, pets or alcohol.*

*\* Shirt and shoes required.*

*\* The Flea Market will be held in a concrete parking lot. Tents will need to be properly weighted down.*

\*\*No purchase necessary. Drawing will be August 10 at Noon. Must be present to win.

**DXE Hamfest at DX Engineering**

Saturday, August 10

9 am to Noon inside the Summit Racing Retail Super Store

# Hamfests & General Announcements

**SUNDAY AUGUST  
25, 2019**

2019 SKYVIEW RADIO  
SOCIETY SWAP N SHOP  
LOCATED AT OUR CLUB  
GROUNDS NEAR NEW  
KENSINGTON PA  
Approx. 13 miles northeast of  
Pittsburgh  
2335 Turkey Ridge Road  
New Kensington, PA 15068  
Talk-in 146.640- 131.8pl



Admission \$5.00 – Table space is \$5.00 (Bring your own table)

Great prizes & Door prizes

Begali CW key raffle

Breakfast and lunch served – Get your Skyview Burger and your Skyview Dipole Hotdog!

Contact: John Italiano WA3KFS – 724-339-3821

Location is near the intersection of Rt. 366 and Rt. 380

**From Apollo / Leechburg:** Take Rt. 66 S to Rt. 380. Take 380 W to Rt. 366. Take Rt. 366 W (toward New Kensington) to the end of the 4 lane. Go ¼ mile past the end of the 4 lane. Turn right on Whitten Hollow Road. Go about ½ mile to first stop sign. Turn right on Turkey Ridge Road. Go about ½ mile to top of hill. Skyview is on the left.

**From New Kensington:** Take Rt. 366 E. Go about 5 miles from the Parnassas area. Look for the Hannan Building on the left. Go about 100 yards past the Hannan Building (If you get to the 4 lane, you went too far). Turn left on Whitten Hollow Road. Go about ½ mile to first stop sign. Turn right on Turkey Ridge Road. Go about ½ mile to top of hill. Skyview is on the left.

**From Monroeville / Parkway:** Rt. 286 E to Rt. 380 E. Take Rt. 380 E to Rt. 366. Take Rt. 366 W (toward New Kensington) to the end of the 4 lane. Go ¼ mile past the end of the 4 lane. Turn right on Whitten Hollow Road. Go about ½ mile to first stop sign. Turn right on Turkey Ridge Road. Go about ½ mile to top of hill. Skyview is on the left.

**From Greensburg:** Rt. 66 N to Rt. 366. Take Rt. 366 W (toward New Kensington). Cross over Route 380 and then go to the end of the 4 lane. Go ¼ mile past the end of the 4 lane. Turn right on Whitten Hollow Road. Go about ½ mile to first stop sign. Turn right on Turkey Ridge Road. Go about ½ mile to top of hill. Skyview is on the left.

Bruce Draper, AA5B, aa5b.coral@gmail.com

## Contest Corral

## August 2019

Check for updates and a downloadable PDF version online at [www.arrl.org/contests](http://www.arrl.org/contests).

Refer to the contest websites for full rules, scoring information, operating periods or time limits, and log submission information.

	Start - Finish Date-Time	Date-Time	Bands	Contest Name	Mode	Exchange	Sponsor's Website	
1	1700	1	2100	28	NRAU 10-Meter Activity Contest	CW Ph Dig	RS(T), 6-char grid square	<a href="http://www.nrau.net">www.nrau.net</a>
1	1900	1	2100	1.8-50	SKCC Sprint Europe	CW	RST, SPC, name, mbr or power	<a href="http://www.skccgroup.com">www.skccgroup.com</a>
3	0001	4	2359	28	10-10 International Summer Contest, SSB	Ph	Name, mbr or "0," SPC	<a href="http://www.ten-ten.org">www.ten-ten.org</a>
3	1200	3	2359	1.8-28	European HF Championship	CW Ph	RS(T), 2-digit year first licensed	<a href="http://lea.hamradio.si/soc">lea.hamradio.si/soc</a>
3	1400	3	1800	144	WAB 144 MHz Low Power Phone	Ph	RS, serial, WAB square or country	<a href="http://wab.internip.net">wab.internip.net</a>
3	1800	4	0559	1.8-28	North American QSO Party, CW	CW	Name, SPC (if North America)	<a href="http://www.ncjweb.com">www.ncjweb.com</a>
3	1800	4	1800	222 and up	ARRL 222 MHz and Up Distance Contest	CW Ph Dig	6-char grid square	<a href="http://www.arrl.org/222-mhz-and-up-distance-contest">www.arrl.org/222-mhz-and-up-distance-contest</a>
4	1400	4	1700	3.5-14	SARL HF Phone Contest	Ph	RS, serial	<a href="http://www.sarl.org.za">www.sarl.org.za</a>
4	2300	6	2300	3.5-28	GZQS Memorial Straight Key Contest	CW	RST, SPC, name, mbr or power	<a href="http://www.fistana.org">www.fistana.org</a>
6	0100	6	0300	3.5-28	ARS Spartan Sprint	CW	RST, SPC, power	<a href="http://arsqp.blogspot.com">arsqp.blogspot.com</a>
10	0000	11	2359	3.5-28	WAE DX Contest, CW	CW	RST, serial	<a href="http://www.darc.de/older-club/referat/referat-contests/worked-all-europe-dx-contest/en">www.darc.de/older-club/referat/referat-contests/worked-all-europe-dx-contest/en</a>
10	0800	10	1100	1.8-28	QRP ARCI European Sprint	CW	RST, SPC, mbr or power	<a href="http://qppe.org/contests">qppe.org/contests</a>
10	1200	11	2359	1.8-50	SKCC Weekend Sprintathon	CW	RST, SPC, name, mbr or "none"	<a href="http://www.skccgroup.com">www.skccgroup.com</a>
10	1400	11	0400	1.8-432	Maryland-DC QSO Party	CW Ph Dig	Entry class, county or SPC	<a href="http://www.w3vpe.org/mdoqsoparty">www.w3vpe.org/mdoqsoparty</a>
12	0000	12	0200	1.8-28	4 States QRP Group Second Sunday Sprint	CW Ph	RS(T), SPC, mbr or power	<a href="http://www.4sqp.com">www.4sqp.com</a>
12	1200	14	1159	144	MMMonVHF/DUBUS 144 MHz Meteorscatter Sprint Contest	CW Ph Dig	Signal report	<a href="http://mmonvhf.de/contestinfo.php">mmonvhf.de/contestinfo.php</a>
14	0030	14	0230	3.5-14	NAQCC CW Sprint	CW	RST, SPC, mbr or power	<a href="http://naqcc.info">naqcc.info</a>
17	0000	18	1600	3.5-28	SARTG WW RTTY Contest	Dig	RST, serial	<a href="http://www.sartg.com">www.sartg.com</a>
17	0600	18	2359	10 GHz-light	ARRL 10 GHz and Up Contest	CW Ph Dig	6-char Maidenhead locator	<a href="http://www.arrl.org/10-ghz-up">www.arrl.org/10-ghz-up</a>
17	0800	18	0800	1.8-28	Russian District Award Contest	CW Ph	RS(T), RU district code or serial	<a href="http://rdaward.org/rdac1.htm">rdaward.org/rdac1.htm</a>
17	1200	18	1200	1.8-50	Keyman's Club of Japan Contest	CW	RST, JA prefecture/district code or continent	<a href="http://www.kcj-cw.com">www.kcj-cw.com</a>
17	1800	17	1759	1.8-50	Feld Hell Sprint	Dig	RST, mbr, SPC, grid	<a href="http://sites.google.com/site/feldhellclub">sites.google.com/site/feldhellclub</a>
17	1800	18	0559	1.8-28	North American QSO Party, SSB	Ph	Name, SPC (if North America)	<a href="http://www.ncjweb.com">www.ncjweb.com</a>
17	2100	18	2100	3.5-28	CVA DX Contest, CW	CW	RST, type/UF	<a href="http://cvadx.org">cvadx.org</a>
18	1400	18	1700	3.5-14	SARL HF Digital Contest	Dig	RST, serial	<a href="http://www.sarl.org.za">www.sarl.org.za</a>
18	1700	18	2100	3.5-28	NJQRP Skooter Hunt	CW Ph	RS(T), SPC, Skooter # or power	<a href="http://www.qsl.net/hz2j">www.qsl.net/hz2j</a>
18	1900	18	2359	3.5-50	ARRL Rookies Roundup, RTTY	Dig	Name, 2-digit year licensed, SPC	<a href="http://www.arrl.org/rookie-roundup">www.arrl.org/rookie-roundup</a>
19	0100	19	0300	1.8-28	Run for the Bacon QRP Contest	CW	RST, SPC, mbr or power	<a href="http://qpcontest.com/pigrun">qpcontest.com/pigrun</a>
24	0400	26	0400	1.8-28	Hawaii QSO Party	CW Ph Dig	RS(T), HI QTH or SPC	<a href="http://www.hawaiiqsoparty.org">www.hawaiiqsoparty.org</a>
24	0600	25	0559	3.5-28	ALARA Contest	CW Ph	RS(T), name, YU/OM/dub	<a href="http://www.alara.org.au/contests">www.alara.org.au/contests</a>
24	1200	25	0300	1.8-50	WVE Islands QSO Party	CW Ph Dig	RS(T), US/CISA Island Designation or SPC	<a href="http://usilands.org">usilands.org</a>
24	1200	25	1159	3.5-28	SCC RTTY Championship	Dig	RST, 4-digit year licensed	<a href="http://lea.hamradio.si/soc">lea.hamradio.si/soc</a>
24	1200	25	1200	3.5-28	YO DX HF Contest	CW Ph	RS(T), YO county or serial	<a href="http://www.yodx.ro/en/english">www.yodx.ro/en/english</a>
24	1400	25	2000	3.5-50	Kansas QSO Party	CW Ph Dig	RS(T), county or SPC	<a href="http://ksqsoparty.org">ksqsoparty.org</a>
24	1600	25	0359	1.8-432	YARC QSO Party	CW Ph Dig	Age, SPC	<a href="http://yarc.worldf1events">yarc.worldf1events</a>
24	1600	25	0400	3.5-28	Ohio QSO Party	CW Ph	RS(T), county or SPC	<a href="http://www.ohqp.org">www.ohqp.org</a>
24	2100	25	2100	3.5-28	CVA DX Contest, SSB	Ph	RS, type/UF	<a href="http://cvadx.org">cvadx.org</a>
24	2300	25	0300	50	50 MHz Fall Sprint	CW Ph Dig	4-char grid square	<a href="http://svhs.org">svhs.org</a>
25	1400	25	1700	3.5-14	SARL HF CW Contest	CW	RST, serial	<a href="http://www.sarl.org.za">www.sarl.org.za</a>
28	0000	28	0200	1.8-28	SKCC Sprint	CW	RST, SPC, name, mbr or power	<a href="http://www.skccgroup.com">www.skccgroup.com</a>
31	1200	1 Sep	1200	3.5-28	UKVEI DX Contest, SSB	Ph	RS, serial, district code (if UK/EI)	<a href="http://www.ukveic.com">www.ukveic.com</a>

All dates refer to UTC and may be different from calendar dates in North America. Contests are not conducted on the 60-, 30-, 17-, or 12-meter bands. Mbr = Membership number. Serial = Sequential number of the contact. SPC = State, Province, DXCC Entity. XE = Mexican state. Listings in blue indicate contests sponsored by ARRL or NCJ. The latest time to make a valid contest QSO is the minute listed in the "Finish Time" column. Data for Contest Corral is maintained on the WA7BNM Contest Calendar at [www.contestcalendar.com](http://www.contestcalendar.com) and is extracted for publication in QST 2 months prior to the month of the contest. ARRL gratefully acknowledges the support of Bruce Horn, WA7BNM, in providing this service.



# It's Your Dime

Remember back when you could communicate by “Pay Phone” for ten cents? This page is for anyone who wants to communicate with the BVARA community and beyond. Please send me your article that you would like posted on this page. Please, only topics and language in good taste. As the editor I reserve the option to post it or ignore it. Send your dime to me at: [kc3bxc.73@gmail.com](mailto:kc3bxc.73@gmail.com)

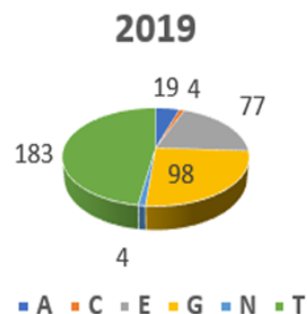
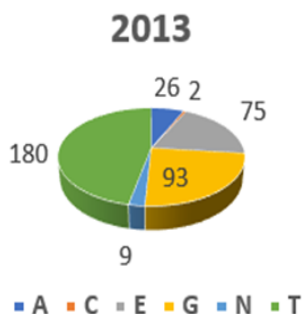


## Beaver County Ham Population

In 2013, with the help of information contained within the [www.QRZ.com](http://www.QRZ.com) site, I was able to determine the total number of licensed hams within Beaver County, PA. I was also able to break down the totals by license class. The distribution seemed a little surprising, but the collection of that information, I figured, might serve as an interesting baseline some time in the future to evaluate changing situations.

### Comparison of Beaver County Ham Population

Year	Advanced	Club	Extra	General	Novice	Technician	Total
2013	26	2	75	93	9	180	385
2019	19	4	77	98	4	183	385



# It's Your Dime

Earlier this year, I came across that six-year old data and decided that a comparison of the changes in six years might be of interest. Numbers and statistics always seem to 'trump' feelings and opinions. Please note the reference to Hearts and 500 card games. Expired licensed hams have been omitted in both sets of data.

Rough comparisons with National US data have also been examined with good agreement.

## Comparison of National with Beaver County Ham Population

Item	Extra	General	Other	Technician	Total
2015 US	22.0%	25.0%	3.0%	50.0%	100.0%
Beaver County	20.0%	25.5%	7.0%	47.5%	100.0%

Bottom line: the total number of hams in Beaver County has not changed over the last six years.

Rich – K3SOM

## BVARA Corn Roast



**Join our Beaver Valley Amateur Radio Association celebration of Summer!**

**When:** Saturday, August 24<sup>th</sup>, 2019 at 5:30 pm

**Where:** Old Economy County Park, Shelter 1 (enter the park and turn left at the swimming pool) where we were on Field Day last year

**Who:** All BVARA members and their families and invited guests

**What:** Club furnishes the corn - please bring a home-baked dessert or covered dish. All home-brought foods are optional, but home-made extras add to the deliciousness. Coffee, pop, and bottled water will be available.

**RSVP:** For planning purposes, we need a count by August 16<sup>th</sup> of how many people will be there, so please:

Email your response to [k3som@arrl.net](mailto:k3som@arrl.net) or [kz3z@verizon.net](mailto:kz3z@verizon.net) or

- Call Rich, K3SOM at (724) 847-0610 or
- Call Pam, W3PMS at (724) 869-2429