

THE eQRM

DECEMBER 2016



The BVARA in Beaver County Pennsylvania

Beaver Valley Amateur Radio Association

W3SGJ

Repeater 145.310 PL 131.8

On the cover:

The Beaver Valley Amateur Radio Association wishes you and yours a very Merry Christmas Season!

Inside this edition

Who We Are	3	Hamfests & General Announcements	10
This Month	4		
Propagation	6	Radio Sport	11
Get a License or Upgrade	7	Bits and Pieces	12
New License and Upgrades	8	Interesting links	13
Membership	9		

Check into our nets

Wednesday 2 Meter

8:30PM on 145.310 MHz PL 131.8

Wednesday 10 Meter

9:00PM on 28.470 MHz

The eQRM is a publication of the Beaver Valley Amateur Radio Association (BVARA) and is Copyright 2010 - 2016. All material presented in this publication is not necessarily the views of the American Radio Relay League (ARRL), BVARA, or members of the said organizations. If you would like to contact the editor of the eQRM, please email David at kc3bxc.73@gmail.com. Please visit us online at www.W3SGJ.org. To subscribe to our newsletter, please visit W3SGJ.org/newsletter.php

Who We Are

2016 BVARA OFFICERS

President: Jack Spencer, KZ3Z

Vice President: Dick Hanna, K3VYY

2nd Vice Pres.: Rob Miller, N3OJL

Treasurer: Pam Spencer, W3PMS

Secretary: Norm Trunick, K3NJT

Director: Bob Winkle, N3AZZ

Director: Bob Croft, KB3RHN

Trustee: Rich Soltesz, K3SOM



MONTHLY MEETINGS

E-Board meetings are now held the Saturday before the monthly club meeting.

VE testing begins at 5:00 PM.

Regular meetings are at 6:30 PM

All meetings are held at
Beaver County
Emergency Services Center
351 14th Street
Ambridge, PA 15003
on the second Thursday of every month
(unless otherwise stated).



2016 MEETING DATES

Dec no meeting

Christmas Party Dec 14th

2017 MEETING DATES

Jan 12

Feb 09

Mar 09

Apr 13

May 11

Jun 08

Jul 14



This Month

BVARA Club Feature Presentation:

This Month:

December 14th, 2016

Christmas Party for BVARA

Christmas Dinner is December 14th. It is important that you contact Mark Kavic before the *December 2nd deadline* with your dinner choices and payment.



More this Month

Weekly

The Monaca Steak and Shake has a great wait staff. Come let them take your order.

Thursday Morning Breakfast
(or you can have lunch)



The BVARA meets every Thursday at Steak 'n Shake in Center Township, by the Beaver Valley Mall, at 10:00 AM. All radio amateurs and those interested in amateur radio are encouraged to come join us at our Thursday morning breakfast.

See you
Thursday at



RACES / ARES

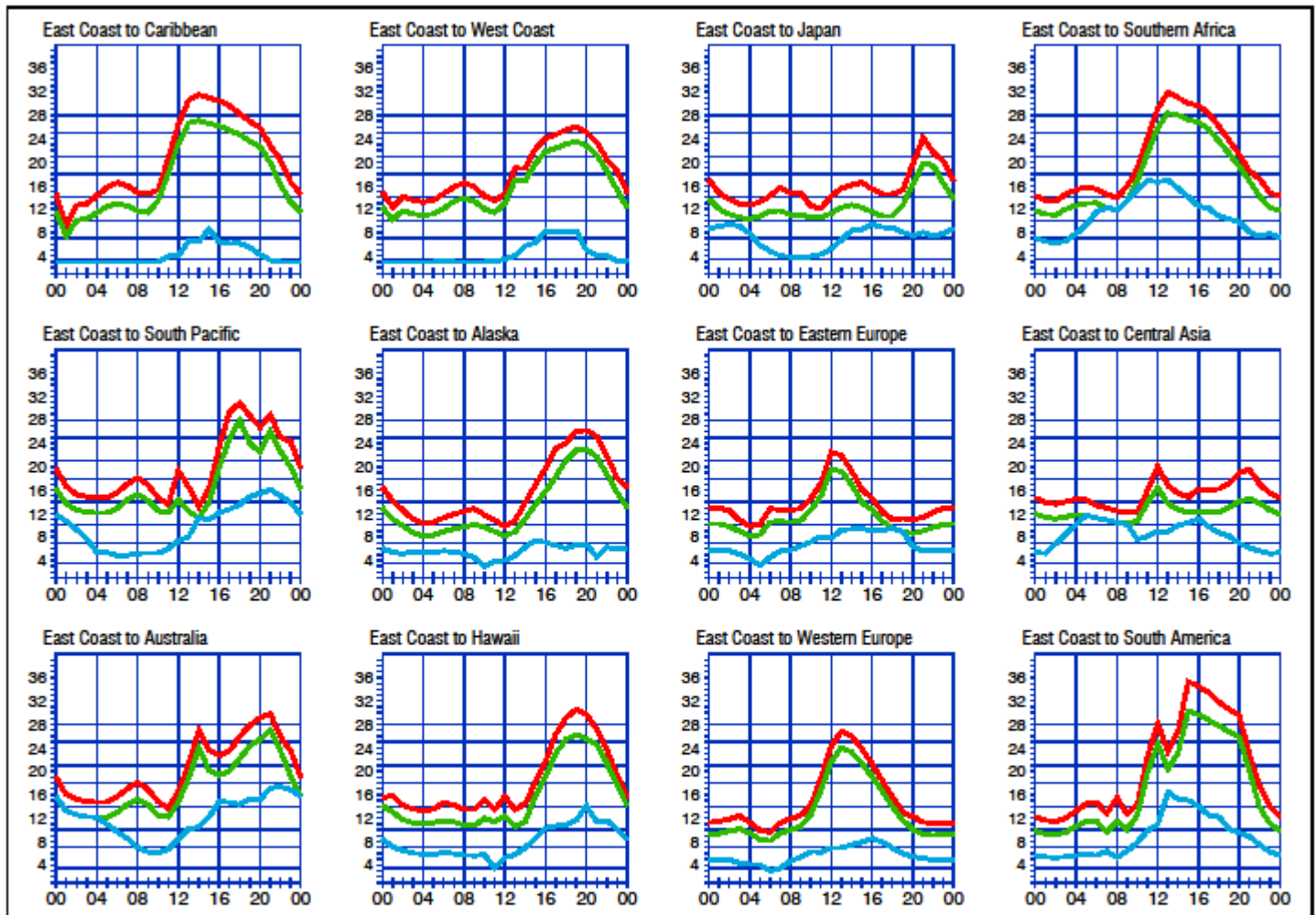
The eQRM Urges All County Hams to Participate.



The eQRM urges all Beaver County licensed amateurs to participate in the County's RACES and ARES programs.

Any Beaver County Amateur that is interested in participating in the RACES/ARES programs can do so by checking into the Beaver County Public Service Net which meets every Monday evening at 8:30 PM local time on the N3TN 146.850 MHz repeater (131.8 PL)

Propagation



When are the bands open? These charts, generated using CAPman, show probabilities for average HF propagation in the month of December for the paths indicated. The horizontal axes show Coordinated Universal Time (UTC), and the vertical axes frequency in MHz. On 10% of the days of this period, the highest frequencies propagated will be at least as high as the upper red curves (HFF, highest possible frequency) and on 50% of the days they will be at least as high as the green curves (MUF, classical maximum usable frequency). The blue curves show the lowest usable frequency (LUF) for a 1500-W CW transmitter. For SSB or a lower transmitter power, the LUF will be somewhat higher than the blue curves indicate. See Oct 1994 QST, pp 27-30, and Feb 1995 QST, pp 34-36, for more details. The predictions assume an observed 2800-MHz solar flux value of 80. This is a Very Low level of solar activity. See the detailed propagation tables on *The ARRL Antenna Book CD-ROM*.

PROPAGATION

The East Coast propagation chart listed here is for December 2016.

If you would like more information in general, please visit <http://www.arrl.org/propagation>

Get your License or Upgrade

If you are interested in getting your first FCC license or upgrading your current amateur radio license, the Beaver Valley Amateur Radio Association holds VE Test sessions (Volunteer Examinations) the second Thursday of each month at the Nine One One center in Ambridge Pennsylvania prior to our BVARA Club meeting. If there is no meeting there is no test session. Please come take your test with us!



For more information, contact :
Rich Soltesz, K3SOM
(724) 847-0610
k3som@arrl.net

VE TEST SESSIONS

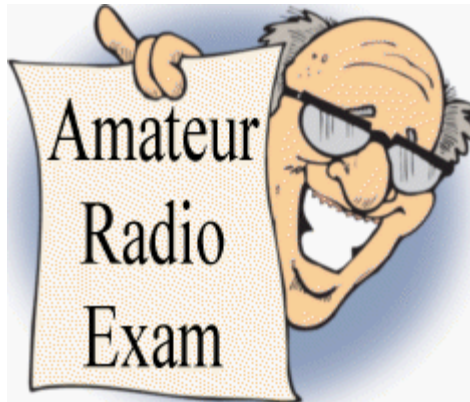
Beaver County Emergency Services Center 351 14th Street Ambridge, PA 15003.
Tests begin promptly at 5 pm on the same day as BVARA Club Meetings
(the second Thursday of the month).
All classes of amateur radio license tests are administered.

ALL candidates MUST bring ALL of the following:

1. 2 forms of I.D. - one MUST be a photo I.D.
2. A pencil AND a pen with blue or black ink.
3. The original AND a photocopy of any valid ham license.
4. The original AND a photocopy of any C.S.C.E.
5. The test fee of \$15 - cash, check, or money order.

New License and Upgrades

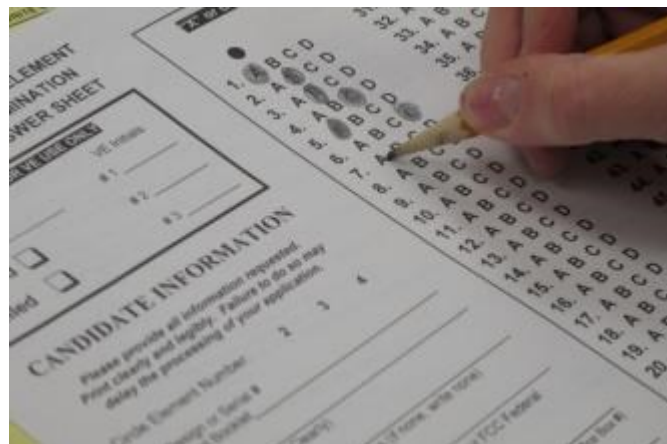
BVARA VE Testing



We had two candidates pass their ham exam in November.

Patrick Stretavski - KC3IDY from Bairdford successfully earned his Technician Class license.

Ron Lapina - KC3IDZ from Cranberry Township successfully earned his Technician Class license.



Membership Information

By becoming a BVARA member you help secure the future of Amateur Radio in Beaver County. Additionally, the BVARA receives a portion of each ARRL

membership you purchase!

Join the BVARA and ARRL

Sign up for:	Price	
<input type="checkbox"/> BVARA full membership	20.00	_____
<input type="checkbox"/> BVARA student membership	15.00	_____
<input type="checkbox"/> BVARA associate membership	10.00	_____
<input type="checkbox"/> BVARA Child under 21 at home membership	5.00	_____
<input type="checkbox"/> One year ARRL membership	49.00	_____
A Club Donation		_____
ARRL Member? Yes No	Total Enclosed	_____

Your License Class (If you have one.)

<input type="checkbox"/> Technician	Name _____
<input type="checkbox"/> General	Address _____
<input type="checkbox"/> Advanced	_____
<input type="checkbox"/> Extra Class	Email _____
	Phone _____
	Your Call sign _____
	Your Signature _____

Make check or money order payable to:

The Beaver Valley Amateur Radio Association, P.O. Box 424

South Heights, Pa 15081

Jeesssssse...



Looks like we will have to wait till February for our next
Hamfest here in Western Pennsylvania

02/26/2017 Washfest 2017
South Park Township, PA
South Hills Radio Club

Contest Corral – December 2016

Check for updates and a downloadable PDF version online at www.arrl.org/contests.

Refer to the contest websites for full rules, scoring information, operating periods or time limits, and log submission information.

Start Date-Time	Finish Date-Time	Bands	Contest name	Mode	Exchange	Sponsor's Website
1 1800	1 2200	28	NRAU 10-Meter Activity Contest	CW Ph Dig	RS(T), 6-char grid square	www.nrau.net/activity-contests
2 2200	4 1600	1.8	ARRL 160-Meter Contest	CW	WVE: RST, ARRL/RAC Section; DX: RST	www.arrl.org/160-meter
3 0000	3 2359	1.8-28	TARA RTTY Melee	Dig	WVE: RST, SP: DX: RST, serial	www.n2ty.org
3 0600	3 0800	7, 14	Wake-Up! QRP Sprint	CW	RST, serial, suffix of previous QSO	qrp.ru/contest/wakeup
3 1600	4 1559	3.5-28	TOPS Activity Contest	CW	RST, serial, club abbreviation (if any)	www.procvclub.ro
4 0000	4 2359	28	10-Meter RTTY Contest	Dig	RST, SP or serial	www.rtycontesting.com
4 1300	4 1600	3.5-14	SARL Digital Contest	Dig	RST, serial	www.sarl.org.za
6 0200	6 0400	3.5-28	ARS Spartan Sprint	CW	RST, SPC, power	arsqp.blogspot.com
10 0000	11 2359	28	ARRL 10-Meter Contest	CW Ph	WVE/XE: RS(T), SP or XE state. DX: RS(T), serial	www.arrl.org/10-meter
10 1200	11 2359	1.8-50	SKCC Weekend Sprintathon	CW	RST, SPC, name, mbr or "none"	www.skccgroup.com
10 1600	11 1559	3.5-28	International Naval Contest	CW Ph	Members: RS(T), club, mbr. Others: RS(T), serial	www.marinefunker.de
10 2300	18 2300	1.8-7	AWA Bruce Kelley 1929 QSO Party	CW	RST, name, QTH, eqpt year and type	www.antiquewireless.org
11 2100	11 2259	14	CQC Great Colorado Snowshoe Run	CW	RST, SPC, antenna class, mbr or power	www.coloradoqrpclub.org
14 0130	14 0330	3.5-14	NAQCC CW Sprint	CW	RST, SPC, mbr or power	naqcc.info
16 2000	17 2359	1.8	Russian 160-Meter Contest	CW Ph	RS(T), Oblast code or serial	qrz.ru/contest/detail/90.html
16 2100	16 2359	3.5	AGB-Party Contest	CW Ph	RS(T), serial, mbr (if any)	www.ev5agb.com
17 0000	17 2359	1.8-50	Feld Hell Sprint	Dig	RST, mbr, SPC, grid	sites.google.com/site/feldhellclub
17 0000	17 2359	3.5-28	OK DX RTTY Contest	Dig	RST, CQ zone	okrty.crk.cz
17 0000	17 2359	1.8-144	RAC Winter Contest	CW Ph	RS(T), province/territory or serial	wp.rac.ca
17 1400	18 1400	1.8-28	Croatian CW Contest	CW	RST, serial	9acw.org
17 1500	18 1500	1.8	Stew Perry Topband Challenge	CW	4-char grid square	www.kkn.net/stew
18 1800	18 2359	3.5-50	ARRL Rookie Roundup, CW	CW	Name, 2-digit year first licensed, SP or XE area or "DX"	www.arrl.org/rookie-roundup
19 0200	19 0400	1.8-28	Run for the Bacon QRP Contest	CW	RST, SPC, mbr or power	qrpcontest.com/pigrun
22 0130	22 0330	3.5-14	NAQCC CW Sprint	CW	RST, SPC, mbr or power	naqcc.info
25 0000	25 1159	3.5-28	RAEM Contest	CW	Serial, latitude and longitude (eg, 57N 85W)	raem.srr.ru/en/main
26 0830	26 1059	3.5, 7	DARC Christmas Contest	CW Ph	RS(T), DOK or serial	darc.de/referate/dx/contest/xmas/en/rules
28 0000	28 0200	1.8-28	SKCC Sprint	CW	RST, SPC, name, mbr or power	www.skccgroup.com

All dates refer to UTC and may be different from calendar dates in North America. Times given as AM or PM are local times and dates.

No contest activity occurs on the 60-, 30-, 17-, and 12-meter bands. Mbr = Membership number. Serial = Sequential number of the contact. S/P/C = State, Province, DXCC Entity. XE = Mexican state. Data for Contest Corral is maintained on the WA7BNM Contest Calendar at www.hornucopia.com/contestcal and is extracted for publication in QST 2 months prior to the month of the contest. The ARRL gratefully acknowledges the support of Bruce Horn, WA7BNM, in providing this service. Listings in blue indicate contests sponsored by ARRL or NCJ. The latest time to make a valid contest QSO is the minute listed in the "Finish Time" column.

Bits and Pieces

As I sit here writing the newsletter I am listening to a radio station (over the web <https://vision.org.au/>) from Australia. They are playing some Christmas music mixed in with the other music. This stirs up my “inner child excitement” for Christmas! As Ham operators we talk to folks from other continents. I was thinking how we in North America associate Christmas with snow and cold. At Christmas it is summer in Australia. How different it would be for us to spend Christmas with them in their summer... At the same time how foreign it would be for someone from there to spend Christmas here with us. There are differences in our worlds; with Ham Radio we have so many similarities. Despite our differences anytime I communicate on the amateur bands I remember to be an ambassador of good will. I want to be a good example; I want to leave a good impression. I will always operate with this in mind. I encourage you to do the same.



You know me and safety. I always want to remind you to keep *safety first* in your radio hobby. Never forego an Elmer Ham’s advice. If the project you are going to undertake is under question, ask some fellow Hams for help. No matter how simple or complex. Ask a fellow Ham for their help or advice. Once an accident happens it’s too late. Think safety and/or ask for help first.

As we all anticipate the excitement of Christmas I wish you a great holiday season. May you have plenty of time to enjoy great food, fellowship and conversation with family and friends. Don’t forget to bless someone less fortunate this holiday season.



Till next month 73.

Some Interesting Links



Santa Clause net <http://14300.net/santainfo.htm>

Santa on the air <http://www.arrl.org/news/ham-radio-santa-is-on-the-air-at-of9x>

HF Santa <https://amrron.com/2014/12/22/hf-santa-net-introduce-the-next-generation-to-ham-radio/>

Ham related gifts <http://www.hamcrazy.com/>

Ham gift ideas <http://www.gifts4hams.com/>

Ham gifts <http://www.cafepress.com/+ham-radio+gifts>

More ham gifts https://www.etsy.com/market/ham_radio

For All Radio Operators

Whether at home or



on the road



The Amateur's Code

CONSIDERATE ...never knowingly operates in such a way as to lessen the pleasure of others.

LOYAL ...offers loyalty, encouragement and support to other amateurs, local clubs, and the American Radio Relay League, through which Amateur Radio in the United States is represented nationally and internationally.

PROGRESSIVE ...with knowledge abreast of science, a well-built and efficient station and operation above reproach.

FRIENDLY ...slow and patient operating when requested; friendly advice and counsel to the beginner; kindly assistance, cooperation and consideration for the interests of others. These are the hallmarks of the amateur spirit.

BALANCED ...radio is an avocation, never interfering with duties owed to family, job, school or community.

PATRIOTIC ...station and skill always ready for service to country and community.