

# THE eQRM

FEBRUARY 2017



## The BVARA in Beaver County Pennsylvania

Beaver Valley Amateur Radio Association

W3SGJ

Repeater 145.310

PL 131.8

## On the cover:

The Beaver Valley has had a mild winter so far. Things will change as winter moves on, despite Punxsutawney Phil. Cardinal photo courtesy of Yahoo Images.

## Inside this edition

BVARA Presentation	3	Hamfests & General Announcements	11
Who We Are	4	Radio Sport	12
This Month	5	Bits and Pieces	13
Propagation	7	Interview with a Ham	14
Get a License or Upgrade	8	It's Your Dime	15
New License and Upgrades	9	Interesting Links	16
Membership	10	Free Licensing Class	17

### Check into our nets

#### Wednesday 2 Meter

**8:30PM on 145.310 MHz PL 131.8**

#### Wednesday 10 Meter

**9:00PM on 28.470 MHz**

The eQRM is a publication of the Beaver Valley Amateur Radio Association (BVARA) and is Copyright 2010 - 2017. All material presented in this publication is not necessarily the views of the American Radio Relay League (ARRL), BVARA, or members of the said organizations. If you would like to contact the editor of the eQRM, please email David at [kc3bxc.73@gmail.com](mailto:kc3bxc.73@gmail.com). Please visit us online at [www.W3SGJ.org](http://www.W3SGJ.org). To subscribe to our newsletter, please visit [W3SGJ.org/newsletter.php](http://W3SGJ.org/newsletter.php)

# BVARA Club Presentation:

## Ham of the Year



*Bob Croft KB3RHN*, on the right was presented with a plaque by BVARA President Jack Spencer. At the final club meeting of 2016, Bob was voted 2016 “Ham of the year” for the BVARA Club by his peers. Bob is very active in Club activities.

Bob’s selfless acts of support of other club members is just one of the attributes that earned him this award. I remember Bob being helpful at an antenna party for another club member. Bob is always considerate and helpful. Bob attends most Thursday breakfasts. It is rare not to see Bob at the monthly club meetings. He has been a great help at Field days and other club events. He brings tasty things to eat, helps with setup and stays till the last length of coax is coiled up and put away.

Congratulations Bob!

# Who We Are

## 2017 BVARA OFFICERS

President: Jack Spencer, KZ3Z

Vice President: Mark Kavic, KB3LED

2nd Vice Pres.: Rob Miller, N3OJL

Treasurer: Pam Spencer, W3PMS

Secretary: Norm Trunick, K3NJT

Director: Bob Winkle, N3AZZ

Director: Bob Croft, KB3RHN

Trustee: Rich Soltesz, K3SOM



## MONTHLY MEETINGS

E-Board meetings are now held the Saturday before the monthly club meeting.

VE testing begins at 5:00 PM.

Regular meetings are at 6:30 PM

All meetings are held at the  
Beaver County  
Emergency Services Center  
351 14th Street  
Ambridge, PA 15003  
on the second Thursday of every month  
(unless otherwise stated).



## 2017 MEETING DATES

Feb 09

Mar 09

Apr 13

May 11

Jun 08

Jul 14

Aug Corn Roast TBA

Sep 14

Oct 12



# This Month

## BVARA Club Feature Presentation

### This Month:

*Speaker:*

Rich Soltesz  
K3SOM

*Topic:*

Winter Field Day Results for W3SGJ

*Including:*

Continuing with our BVARA Presentation Series this year, our topic this month deals with an event designed to foster ham camaraderie, field operation, emergency operating preparedness, and just plain on the air, outdoor fun in the midst of winter for American, Canadian and DX Amateurs. Two club members set about participating in this winter event that first began in 2007.

We'll first look briefly at the unique categories of this event and then review the similarities to the June ARRL Field Day event. Weather plays a significant role in all aspects of the Winter Field Day event from trying to handle cold, insulated wire to attempting to drive in ground rods. The good news is that bugs and insects are no problem and thunderstorms with their bothersome QRN are gone. With the declining solar cycle, the lower frequencies become more viable due to the increased amount of after dark operating time in winter.

But wait, there's more! Photos will enable us to look at how our equipment was set up, our antennas, emergency power source, our unique SDR-only stations and other details of our setup. Our BVARA success at Winter Field Day will be summarized with our scores and a map showing our accomplishments. Whether you are a beginner or a veteran ham, bring your questions to the meeting because this is one exciting presentation that you won't want to miss.



*Rich's Background:*

Extra Class Ham, Licensed since 1962, VE,  
B.S. Electrical Engineering

# More this Month

## Weekly

The Freedom Square Diner in Monaca has a great wait staff. Come let them take your order.

Thursday Morning Breakfast  
(or you can have lunch)



The BVARA meets every Thursday at the Freedom Square Diner in Center Township, just to the right of the Cinemark Center Township Marketplace at 09:45 AM. All radio amateurs and those interested in amateur radio are encouraged to come join us at our Thursday morning breakfast.



## See you Thursday at

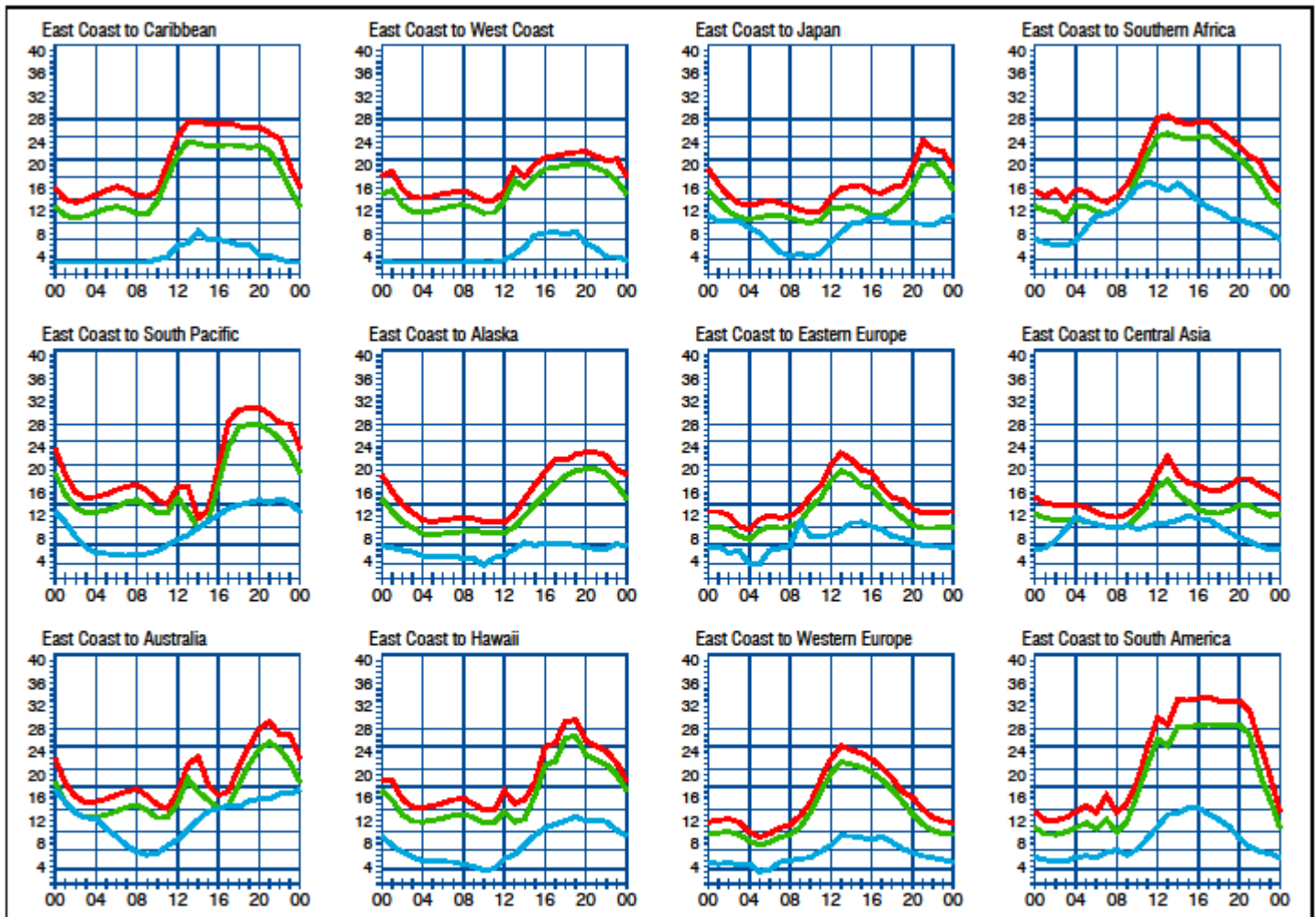
The eQRM urges all Beaver County licensed amateurs to participate in the County's RACES and ARES programs.

Any Beaver County Amateur that is interested in participating in the RACES/ARES programs can do so by checking into the Beaver County Public Service Net which meets every Monday evening at 8:30 PM local time on the N3TN 146.850 MHz repeater (131.8 PL)

RACES / ARES  
The eQRM Urges All County Hams to Participate.



# Propagation



When are the bands open? These charts, generated using CAPman, show probabilities for average HF propagation in the month of February for the paths indicated. The horizontal axes show Coordinated Universal Time (UTC), and the vertical axes frequency in MHz. On 10% of the days of this period, the highest frequencies propagated will be at least as high as the upper red curves (HFF, highest possible frequency) and on 50% of the days they will be at least as high as the green curves (MUF, classical maximum usable frequency). The blue curves show the lowest usable frequency (LUF) for a 1500-W CW transmitter. For SSB or a lower transmitter power, the LUF will be somewhat higher than the blue curves indicate. See Oct 1994 QST, pp 27-30, and Feb 1995 QST, pp 34-36, for more details. The predictions assume an observed 2800-MHz solar flux value of 77. This is a Very Low level of solar activity. See the detailed propagation tables on *The ARRL Antenna Book CD-ROM*.

## PROPAGATION

The East Coast propagation chart listed here is for February 2017.

If you would like more information in general, please visit <http://www.arrl.org/propagation>

# Get your License or Upgrade

If you are interested in getting your first FCC license or upgrading your current amateur radio license, the Beaver Valley Amateur Radio Association holds VE Test sessions (Volunteer Examinations) the second Thursday of each month at the Nine One One center in Ambridge Pennsylvania prior to our BVARA Club meeting. If there is no meeting there is no test session. Please come take your test with us!



For more information, contact :  
Rich Soltesz, K3SOM  
(724) 847-0610  
k3som@arrl.net

## VE TEST SESSIONS

Beaver County Emergency Services Center 351 14th Street Ambridge, PA 15003.  
Tests begin promptly at 5 pm on the same day as BVARA Club Meetings  
(the second Thursday of the month).  
All classes of amateur radio license tests are administered.

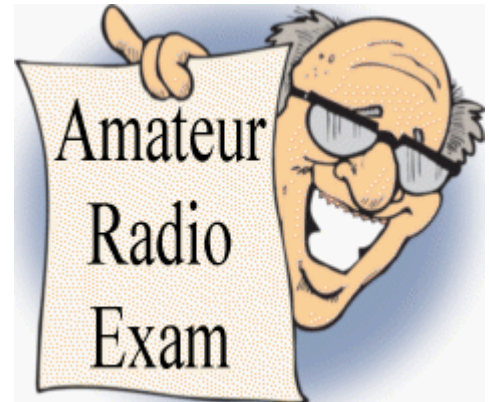
ALL candidates MUST bring ALL of the following:

1. 2 forms of I.D. - one MUST be a photo I.D.
2. A pencil AND a pen with blue or black ink.
3. The original AND a photocopy of any valid ham license.
4. The original AND a photocopy of any C.S.C.E.
5. The test fee of \$15 - cash, check, or money order.

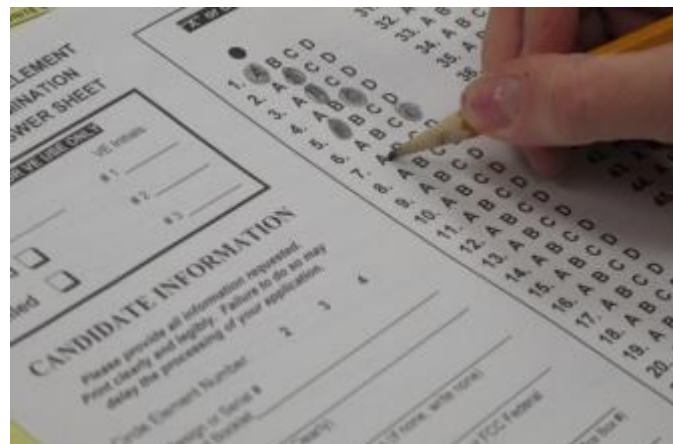


# New License and Upgrades

BVARA VE Testing



Ethan Crosby of Greensburg Pennsylvania successfully passed the tech test at the BVARA test session for January. Ethan has been licensed as KC3ILB.



# Membership Information

By becoming a BVARA member you help secure the future of Amateur Radio in Beaver County. Additionally, the BVARA receives a portion of each ARRL

membership you purchase!

## Join the BVARA and ARRL

Sign up for:	Price	
<input type="checkbox"/> BVARA full membership	20.00	_____
<input type="checkbox"/> BVARA student membership	15.00	_____
<input type="checkbox"/> BVARA associate membership	10.00	_____
<input type="checkbox"/> BVARA Child under 21 at home membership	5.00	_____
<input type="checkbox"/> One year ARRL membership	49.00	_____
A Club Donation		_____
ARRL Member?    Yes    No	Total Enclosed	_____

Your License Class (If you have one.)

<input type="checkbox"/> Technician	Name _____
<input type="checkbox"/> General	Address _____
<input type="checkbox"/> Advanced	_____
<input type="checkbox"/> Extra Class	Email _____
	Phone _____
	Your Call sign _____
	Your Signature _____

Make check or money order payable to:

The Beaver Valley Amateur Radio Association, P.O. Box 424

South Heights, Pa 15081

# Hamfests & General Announcements



# WASHfest 2017

The South Hills Hamfest — Now in our **TWENTY SECOND** big year!  
Sponsored by the WIRELESS ASSOCIATION OF SOUTH HILLS AMATEUR RADIO CLUB, INC.

Sunday, February 26<sup>th</sup>, 2017  
8:00 AM until 3:00 PM Rain or Shine (or Snow!)

**Home Economics Building, South Park**

3735 Buffalo Drive, South Park Township, PA 15129  
Talk-In on 146.955(-) and 443.650(+) 131.8 PL  
Donation \$5



**(800) 545-8881**

Breakfast & Lunch will be available!



FREE Coffee for the entire Hamfest  
courtesy of HAM RADIO INSURANCE ASSOCIATES  
of Canonsburg, PA

**MAIN PRIZES — You've Got to Play to WIN!**



- First Prize:** ICOM IC-7300  
100 W HF+6 M Transceiver
- Second Prize:** Comet GAA-Mark 2  
Antenna Analyzer
- Third Prize:** Clear Speech DSP Noise  
Reduction Speaker

**NEW LOCATION!**

Due to tentatively scheduled major renovations, we regret that the Castle Shannon VFD Memorial Hall will not be available to us in 2017

**Additional Hourly Door Prizes! Special Black Box Prize (Separate Drawing)!**  
Main Prize tickets are \$2.00 each, 3 for \$5.00, 7 for \$10, 15 for \$20  
All Prizes Subject to last-minute changes

For Table Reservations, or More Information, Please Contact:

Carol Danko KB3GMN at (412) 884-1466 [n3sbf@comcast.net](mailto:n3sbf@comcast.net)  
E-mail us directly at [washarc@yahoo.com](mailto:washarc@yahoo.com) Check out our website too! [www.n3sh.org](http://www.n3sh.org)

**Please Note:** Early Table Reservations must be paid in full on or before January 31<sup>st</sup>, 2017. Reservations received after February 1<sup>st</sup>, 2017 must include payment in full. Reserve now... we have sold out in advance seven years running!

Hamfest Table Reservation Form—Please PRINT LEGIBLY ALL INFORMATION

Name: \_\_\_\_\_ Email: \_\_\_\_\_

Address: \_\_\_\_\_ Phone: ( ) \_\_\_\_\_ - \_\_\_\_\_

City: \_\_\_\_\_ State: \_\_\_\_\_ Zip: \_\_\_\_\_

Call Sign: \_\_\_\_\_

Tables WITH Electricity: \_\_\_\_\_ X \$15.00 = \_\_\_\_\_

Tables WITHOUT Electricity: \_\_\_\_\_ X \$12.00 = \_\_\_\_\_

5 Or More Tables w/o: \_\_\_\_\_ X \$10.00 = \_\_\_\_\_

Please make all checks payable to:  
WIRELESS ASSOCIATION OF SOUTH HILLS  
PLEASE MAIL RESERVATION TO:  
WASHFEST 2017  
C/O CAROL DANKO KB3GMN  
4246 Seton Drive  
Pittsburgh, PA 15227-1244

We reserve the right to resell any tables not occupied by 8 AM, unless prior arrangements have been made!

## Contest Corral – February 2017

Check for updates and a downloadable PDF version online at [www.arrl.org/contests](http://www.arrl.org/contests).

Refer to the contest websites for full rules, scoring information, operating periods or time limits, and log submission information.

Start Date-Time	Finish Date-Time	Bands	Contest name	Mode	Exchange	Sponsor's Website
1 2000	1 2100	3.5	UKEICC 80-Meter Contest	Ph	4-char grid square	<a href="http://www.ukaicc.com">www.ukaicc.com</a>
4 0000	4 2359	3.5-28	Triathlon DX Contest	CW Ph Dig	RS(T), serial	<a href="http://triathlon-dx-contest.gr">triathlon-dx-contest.gr</a>
4 0000	5 2359	All	Vermont QSO Party	CW Ph Dig	RS(T), county or SPC	<a href="http://www.ramv.org/vtqso.html">www.ramv.org/vtqso.html</a>
4 0001	5 2359	28	10-10 International Winter Contest, SSB	Ph	Name, mbr or 'b,' SPC	<a href="http://www.ten-ten.org">www.ten-ten.org</a>
4 1200	5 1159	1.8-28	Black Sea Cup International	CW Ph	RS(T), club or ITU zone	<a href="http://bscc.ucoz.ru/index/0-21">bscc.ucoz.ru/index/0-21</a>
4 1200	5 1200	3.5-28, 144	FaAA Cup, CW	CW	RST, serial	<a href="http://www.site.uco.esso.fr">www.site.uco.esso.fr</a>
4 1400	4 2359	1.8-28	Minnesota QSO Party	CW Ph	Name, country or SPC	<a href="http://www.w0aa.org">www.w0aa.org</a>
4 1400	4 2359	1.8-28	FYBO Winter QRP Sprint	CW Ph Dig	RS(T), SPC, name, power, temperature	<a href="http://www.azsoqptions.com">www.azsoqptions.com</a>
4 1600	4 1900	3.5	AGCW Straight Key Party	CW	RST, serial, class, name, age	<a href="http://agcw.org/index.php/lan">agcw.org/index.php/lan</a>
4 1600	5 0400	1.8-28	British Columbia QSO Party	CW Ph Dig	RS(T), BC district or SPC	<a href="http://cncadxc.org/boqp_rules.html">cncadxc.org/boqp_rules.html</a>
4 1700	4 2100	3.5-28	FISTS Winter Slow Speed Sprint	CW	RST, SPC, name, mbr or power	<a href="http://fistna.org">fistna.org</a>
4 1800	5 1759	3.5-28	Mexico RITTY International Contest	Dig	RST, XE state or serial	<a href="http://www.rttyfme.mx">www.rttyfme.mx</a>
5 0000	5 0400	3.5-14	North American Sprint, CW	CW	Other's call, your call, serial, name, SPC	<a href="http://ncjwab.com/Sprint-Rules.pdf">ncjwab.com/Sprint-Rules.pdf</a>
7 0200	7 0400	3.5-28	ARS Spartan Sprint	CW	RST, SPC, power	<a href="http://arsqp.blogspot.com">arsqp.blogspot.com</a>
11 0000	12 2359	3.5-28	CQ WW RITTY WPX Contest	Dig	RST, serial	<a href="http://www.cqwwpxrtty.com/rules.htm">www.cqwwpxrtty.com/rules.htm</a>
11 1000	12 1000	1.8-28	SARL Field Day Contest	CW Ph Dig	RS(T), # of xmits, category, Province	<a href="http://www.sarl.org.za">www.sarl.org.za</a>
11 1100	11 1900	7, 14	Asia-Pacific Spring Sprint, CW	CW	RST, serial	<a href="http://jafc.org/lapsprint/aprule.txt">jafc.org/lapsprint/aprule.txt</a>
11 1200	12 2359	1.8-50	SKCC Weekend Sprintathon	CW	RST, SPC, name, mbr or 'none'	<a href="http://www.skccgroup.com">www.skccgroup.com</a>
11 1200	12 1200	1.8	KCJ Topband Contest	CW	RST, Prefecture or continent code	<a href="http://www.kcj-cw.com">www.kcj-cw.com</a>
11 1200	12 1200	1.8-28	Dutch PACC Contest	CW Ph	RS(T), Province or serial	<a href="http://pacc.voron.nl">pacc.voron.nl</a>
11 1500	12 1500	1.8-28	OMISS QSO Party	Ph	RS, SPC, mbr (if any)	<a href="http://www.omiss.net">www.omiss.net</a>
11 1700	11 2100	3.5-28	FISTS Winter Unlimited Sprint	CW	RST, SPC, name, mbr or power	<a href="http://fistna.org">fistna.org</a>
11 2300	12 2300	3.5-14	AWA AM QSO Party	Ph	Name, SPC	<a href="http://www.antiquowireless.org">www.antiquowireless.org</a>
12 1200	12 1800	3.5, 7	Balkan HF Contest	CW Ph	RS(T), serial	<a href="http://balkan-hf.hamradio.ro/rules">balkan-hf.hamradio.ro/rules</a>
13 0100	13 0259	3.5-14	COC Winter QSO Party	CW	RST, SPC	<a href="http://www.colesdoqrpclub.org">www.colesdoqrpclub.org</a>
13 1300	17 2359	All	ARRL School Club Roundup	CW Ph	RS(T), Class (W/C/S), SPC	<a href="http://www.arrl.org/school-club-roundup">www.arrl.org/school-club-roundup</a>
14 0000	14 2359	1.8-7	PODXS 070 Club Valentine Sprint	Dig	Name, "OM" or "YL," SPC	<a href="http://www.podxs070.com">www.podxs070.com</a>
15 1900	15 2030	3.5	AGCW Semi-Automatic Key Evening	CW	RST, serial, year first used a bug	<a href="http://agcw.org/index.php/lan">agcw.org/index.php/lan</a>
18 0000	19 2359	1.8-28	ARRL International DX Contest, CW	CW	RST, SP (DX: power)	<a href="http://www.arrl.org/arrl-dx">www.arrl.org/arrl-dx</a>
18 0000	26 2359	3.5, 7, 21, 28, 144	Novice Rig Roundup	CW	RST, name, QTH, rig, xtal/WFO, power	<a href="http://novicorigroundup.com">novicorigroundup.com</a>
18 0800	18 1000	7	SARL Youth Day Sprint	Ph	RS, age	<a href="http://www.sarl.org.za">www.sarl.org.za</a>
18 1200	11 1159	1.8-28	Russian PSK WW Contest	Dig	RST, Oblast or serial	<a href="http://www.rdrclub.ru">www.rdrclub.ru</a>
18 1900	18 2059	1.8-50	Field Hall Sprint	Dig	RST, name, mbr, SPC, grid	<a href="http://sites.google.com/site/fieldhallclub">sites.google.com/site/fieldhallclub</a>
20 0200	20 0400	1.8-28	Run for the Bacon QRP Contest	CW	RST, SPC, mbr or power	<a href="http://qrpcontest.com/pigrun">qrpcontest.com/pigrun</a>
22 0000	22 0200	1.8-28	SKCC Sprint	CW	RST, SPC, name, mbr or power	<a href="http://www.skccgroup.com">www.skccgroup.com</a>
22 0130	22 0330	1.8	NAQCC CW Sprint	CW	RST, SPC, mbr or power	<a href="http://naqcc.info">naqcc.info</a>
22 2000	22 2100	3.5	UKEICC 80-Meter Contest	CW	4-char grid square	<a href="http://www.ukaicc.com">www.ukaicc.com</a>
24 2200	26 2200	1.8	CQ 160-Meter Contest, SSB	Ph	WVE: RS, SP, DX: RS, CQ Zone	<a href="http://www.cq160.com/rules.htm">www.cq160.com/rules.htm</a>
25 0600	26 1800	3.5-28	REF Contest, SSB	Ph	RS, French Department or serial	<a href="http://concours-r-a-1.org/contest/">concours-r-a-1.org/contest/</a>
25 1300	26 1300	3.5-28	UBA DX Contest, CW	CW	RST, serial, ON province (if ON)	<a href="http://www.uba.be/en/traffic-news">www.uba.be/en/traffic-news</a>
25 1500	26 0159	1.8-50	South Carolina QSO Party	CW Ph Dig	RS(T), county or SPC	<a href="http://scqso.com/rules">scqso.com/rules</a>
25 1800	26 0559	3.5-28	North American QSO Party, RITTY	Dig	Name, SPC	<a href="http://www.ncjwab.com">www.ncjwab.com</a>
26 0900	26 1700	3.5-28	High Speed Club CW Contest	CW	RST, mbr or "NM"	<a href="http://www.highspeedclub.org">www.highspeedclub.org</a>
26 1300	26 1800	3.5-14	SARL Digital Contest	Dig	RST, serial	<a href="http://www.sarl.org.za">www.sarl.org.za</a>
26 1500	27 0059	3.5-144	North Carolina QSO Party	CW Ph Dig	County or SPC	<a href="http://ncsoparty.org">ncsoparty.org</a>

All dates refer to UTC and may be different from calendar dates in North America. Times given as AM or PM are local times and dates. No contest activity occurs on the 60-, 30-, 17-, and 12-meter bands. Mbr = Membership number. Serial = Sequential number of the contact. S/P/C = State, Province, DXCC Entity, XE = Mexican state. Data for Contest Corral is maintained on the WA7BNM Contest Calendar at [www.hornuocpla.com/contestcal](http://www.hornuocpla.com/contestcal) and is extracted for publication in QST 2 months prior to the month of the contest. ARRL gratefully acknowledges the support of Bruce Horn, WA7BNM, in providing this service. Listings in blue indicate contests sponsored by ARRL or NCJ. The latest time to make a valid contest QSO is the minute listed in the "Finish Time" column.

# Bits and Pieces

This month I interviewed Pam Spencer W3PMS for the newsletter page “Interview with a Ham”. I had fun and got to know Pam a little better. She has a great sense of humor! I added another feature page that is called “It’s your dime”. I think this will be another interesting item in our newsletter. I like that it is a way for other members to become involved with newsletter content.



I am having a great time with the newly added content of the newsletter. I have gotten to know my fellow ham club members a little better. Please help me make our monthly newsletter better by sharing your ideas with me.

Some time ago in the newsletter I encouraged you to try some different facet of the radio hobby, anyone want to share what they did? I had the interest in learning Morse code. I have fallen short of my goal. Life got a little hectic around my house and my hobby interest had to go on the back burner for now. I haven’t given up. I have to wait for life to slow back down a bit.

I was going to add a page or two about my experience of using solar heat. I will share that next month, March. I have to learn some new software so I can draw a picture of how I built my solar heater. Waiting till next month will give me a little more time. My design is very simple. I am sure it’s nothing new. It is just my answer to how to heat with solar. I use my solar heater in my little workshop. The solar heater could easily be used to heat a radio shack. More about this next month.

I was introduced to an amateur operator that gave me some safety advice I had never considered. Unfortunately he sustained a permanent injury. It is sad he had not gotten the advice he shared with me. **“Wear safety glasses when working on an antenna”**. He learned this important advice the hard way, I share it with you hoping you will not. He walked into a rod sticking perpendicular to the antenna. Even though the rod had a rubber cover on it he sustained a permanent eye injury. Please, always consider the safety aspects of your radio hobby. Be careful. Be safe.

As always 73, KC3BXC



# Interview with a Ham

*Name :* Pam Spencer

*Call sign and license class:* W3PMS, General Class

*Year of first FCC License :* December 2007

*Did you ever make a crystal radio?* Me? No

*Did you ever listen to short wave radio?* Maybe a little, on a “Sharp” brand radio

*Did you ever use CB radio?* No

*How did you get interested in Ham Radio?* My husband forced me. All in good fun (*Pam reports*)

*Did you ever build a Ham Radio?* No

*What was your first radio?* A hand-held Alinco 2 meter

*What was your first antenna?* Rubber duck on the Alinco

*What is your current antenna & radio?* An Icom 228 mobile 2 meter in my car

*What is your favorite mode to operate?* Phone on 2 meters

*Your most memorable contact?* While running the 2 meter Club Net, a man from Ohio would call in. He had a W8 call. He was kind and fun on the net. He is now a SK.

*What was you most fun contact?* My first DX, McKeesport Pennsylvania! *was Pam's tongue in cheek response . . . and laughed.*

*What part of the hobby interests you the most? (field day, home brewing, contesting, Hamfest, restoring old radios)* Field day, I enjoy the excitement of set-up, the pot luck dinner that follows. Making contacts, helping hear and logging contacts. I enjoy the whole weekend. Tear down is the hardest part.

*Have you ever been on a fox hunt?* No

*Do you use a logging program? (what is it)* Yes, a pencil and paper. Mostly as the control operator for 2 Meter club nets. Our repeater is down right now, I sure miss hosting the net. Hopefully we will be back on the air soon.

*Would you purchase a Software Defined Radio?* Yes, it sounds interesting to me. I think SDR will help attract young people interested in Ham radio.

*Do you use automation with your Ham Radio?* No

*If you had a magic wand and could change Ham radio what would you change and why?* To have more people in the hobby.

*Where do you see ham radio in ten years?* I think you will just have it on your computer... Maybe use a cell phone app. I think there will always be those that want to fiddle with knobs on old radios.

# It's Your Dime

Remember back when you could communicate by "Pay Phone" for ten cents? This page is for anyone who wants to communicate with the BVARA community and beyond. Please send me your article that you would like posted on this page. Please, only topics and language in good taste. As the editor I reserve the option to post it or ignore it. Send your dime to me at:

[kc3bxc.73@gmail.com](mailto:kc3bxc.73@gmail.com)



***Dick Hanna sent this email to our new Section Manager and Division Director about the new Outgoing QSL Bureau fees, specifically the \$7 per use fee regardless of the number of QSL cards sent.***



I am writing to express my displeasure with the recent rate structure changes for the Outgoing QSL Bureau on being a "Big Gun" Dx'er I use the bureau maybe 2 or 3 times a year with a total each time of 20-30 cards. For a person like me this becomes as much as a 250% increase! For the large user it is not so bad. With the addition of the \$7 fee per use it unfairly penalizes the small user like me. I honestly can see there may be a need for an increase due to postage fees increasing, but this is not the way in my opinion. The cost should be added on a per card basis so that the large user "feels the pain" as well!

I have heard the opinion from some of my fellow hams that "The league wants to force you into LOTW!" I am an LOTW user! I like its ease of use, but I also like the occasional paper card. Please consider changing the Outgoing Bureau charges.

Sincerely,

J. Richard Hanna, K3VYY, Life Member

I encourage others to comment!

Atlantic Division Director's email [w3tom@arrl.org](mailto:w3tom@arrl.org)

# Some Interesting Links



- Ham radio supplies <http://www.americanradiosupply.com/>
- Grounding supplies <http://www.gacopper.com/>
- Learn Morse code <http://morsefusion.com/>
- Radio Amplifier <http://www.expertlinears.com/>
- Antennas & electronics <http://www.ni4l.com/>
- Antennas <http://www.alphaantenna.com/>
- Radio supplies <http://www.randl.com/shop/catalog/index.php>



# Free Ham Class



## **Interested in becoming a Ham Operator?**

The BVARA is giving a free class for your first license,  
A Technician Class license.

Class location : 911 Center in Ambridge

Date : Saturday 4, February 2017 9am-11am

Contact : Jack Spencer

(724) 869-2429

# For All Radio Operators

Whether at home or



on the road



## The Amateur's Code

**CONSIDERATE** ...never knowingly operates in such a way as to lessen the pleasure of others.

**LOYAL** ...offers loyalty, encouragement and support to other amateurs, local clubs, and the American Radio Relay League, through which Amateur Radio in the United States is represented nationally and internationally.

**PROGRESSIVE** ...with knowledge abreast of science, a well-built and efficient station and operation above reproach.

**FRIENDLY** ...slow and patient operating when requested; friendly advice and counsel to the beginner; kindly assistance, cooperation and consideration for the interests of others. These are the hallmarks of the amateur spirit.

**BALANCED** ...radio is an avocation, never interfering with duties owed to family, job, school or community.

**PATRIOTIC** ...station and skill always ready for service to country and community.