

THE eQRM

MAY 2016



The BVARA in Beaver County Pennsylvania

Beaver Valley Amateur Radio Association

W3SGJ

Repeater 145.310 pl 131.8

On the cover :

Spring time is the time for outside projects. Seems everyone is thinking of a new antenna. This antenna is ready to be pulled up into place. Is a new tower install in your future? Go for it! Think safety with any new project. This is the tower of NN4ZZ Clifford Ludwick Jr of Loganville, Georgia.

Inside this edition

Who We Are	3	Hamfests & General Announcements	10
This Month	4		
Propagation	6	Radio Sport	13
Get a license or Upgrade	7	Bits and Pieces	14
New license and Upgrades	8	Interesting links	15
Membership	9		

Check in to our nets

Wednesday 2 Meter

8:30PM on 145.310 MHz pl131.8

Wednesday 10 Meter

9:00PM on 28.470 MHz

The eQRM is a publication of the Beaver Valley Amateur Radio Association (BVARA) and is Copyright 2010 - 2016. All material presented in this publication is not necessarily the views of the American Radio Relay League (ARRL), BVARA, or members of the said organizations. If you would like to contact the editor of the eQRM, please email David at kc3bxc.73@gmail.com. Please visit us online at www.W3SGJ.org. To subscribe to our newsletter, please visit W3SGJ.org/newsletter.php

Who We Are

2016 BVARA OFFICERS

President: Jack Spencer, KZ3Z

Vice President: Dick Hanna, K3VY

2nd Vice Pres.: Rob Miller, N3OJL

Treasurer: Pam Spencer, W3PMS

Secretary: Norm Trunick, K3NJT

Director: Bob Winkle, N3AZZ

Director: Bob Croft, KB3RHN



MONTHLY MEETINGS

E-Board meetings are now held the Saturday before the monthly club meeting.

VE testing begins at 5:00 PM.

Regular meetings are at 6:30 PM

All meetings are held at
Beaver County
Emergency Services Center
351 14th Street
Ambridge, PA 15003
on the second Thursday of every month
(unless otherwise stated).

2016 MEETING DATES

May 12

Jun 09

Jul 14

Aug no meeting

Corn Roast Aug 20th

Sep 08

Oct 13

Nov 10

Dec no meeting

Christmas Party Dec 3rd



This Month

BVARA Club Feature Presentation:

Speaker :
Rich Soltesz K3SOM

Topic :
Raspberry Pi and Ham Radio
Applications

Including:
Continuing with our BVARA Presentation
Series this year, our topic this month

borrowes an idea from QST Magazine's *Eclectic Technology* page to explore a 'hands on' presentation of connecting a Raspberry Pi 2B to my ICOM-7000 to run the FLDigi and WSJT-X free software applications under the Ubuntu-Mate Operating System. This amazing credit card sized computer only costs around \$35 yet boasts an HDMI display output.

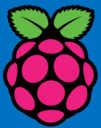
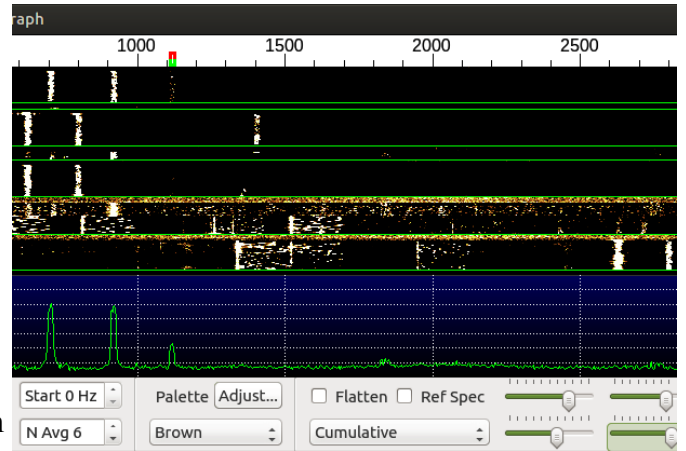
We'll examine what software support packages are needed to format and load the Operating System and also provide information on where to find the required Operating System and ham radio applications. Did I mention that these are all free?

You may question whether the lowly Raspberry Pi has enough 'horsepower' to run these applications. Not to fear! We'll begin by talking about the history of the Raspberry Pi and some of the evolving hardware changes.

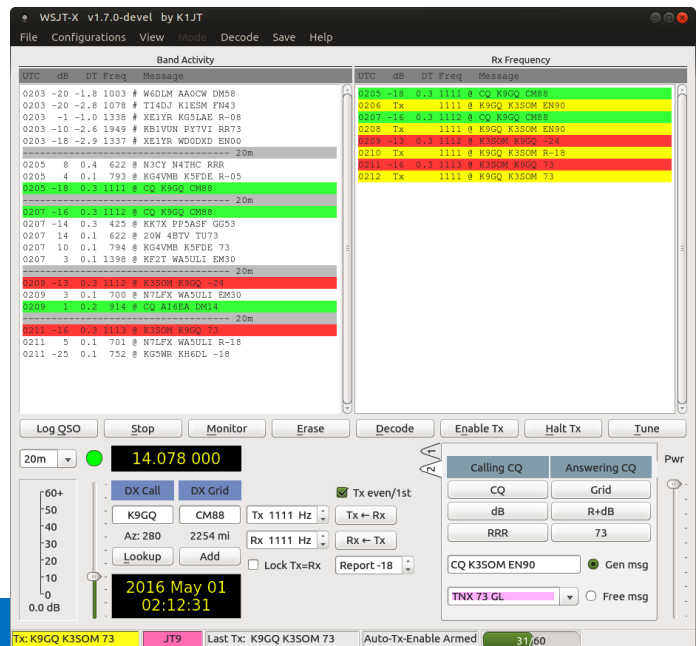
Then we'll describe what the Raspberry Pi 2B has 'under the hood'. You just may be amazed at what we find.

But wait, there's more! We'll connect all of this hardware and software to an antenna and run a live demo of these software packages in operation. This is one exciting presentation you won't want to miss!

Rich's Background:
Extra Class Ham, Licensed since 1962, VE,
B.S. Electrical Engineering



Raspberry Pi



More this Month

Weekly

Thursday Morning Breakfast



The BVARA meets every Thursday at Steak 'n Shake in Center Township, by the Beaver Valley Mall, at 10:00 AM. All radio amateurs are encouraged to come join us at our Thursday morning breakfast.

See you Thursday at



RACES / ARES

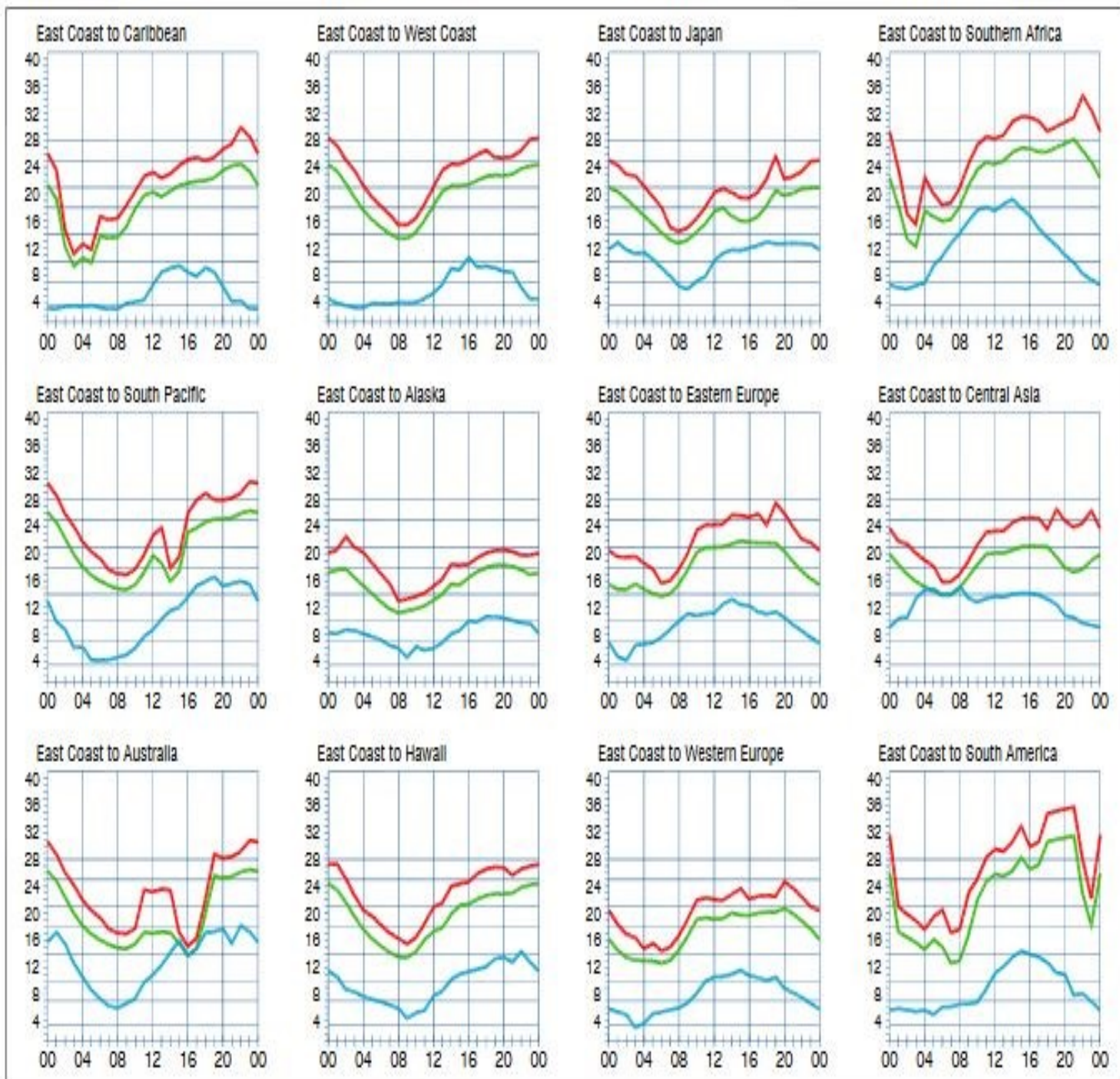
eQRM Urges All County Hams to Participate.



Dear Mr. Anonymous :
Thank you for paying for my lunch. We have very kind members in the BVARA Club.
KC3BXC.

The eQRM urges all Beaver County licensed amateurs to participate in the County's RACES and ARES programs. Any Beaver County Amateur that is interested in participating in the RACES/ARES programs can do so by checking into the Beaver County Public Service Net which meets every Monday evening at 8:30 PM local time on the N3TN 146.850 MHz repeater (131.8 PL)

Propagation



When are the bands open? These charts, generated using CAPman, show probabilities for average HF propagation in the month of May for the paths indicated. The horizontal axes show Coordinated Universal Time (UTC), and the vertical axes frequency in MHz. On 10% of the days of this period, the highest frequencies propagated will be at least as high as the upper red curves (HPF, highest possible frequency) and on 50% of the days they will be at least as high as the green curves (MUF, classical maximum usable frequency). The blue curves show the lowest usable frequency (LUF) for a 1500-W CW transmitter. For 88B or a lower transmitter power, the LUF will be somewhat higher than the blue curves indicate. See Oct 1994 QST, pp 27-30, and Feb 1995 QST, pp 34-36, for more details. The predictions assume an observed 2800-MHz solar flux value of 111. This is a High level of solar activity. See the detailed propagation tables on The ARRL Antenna Book CD-ROM.

PROPAGATION

The East Coast propagation chart listed here is for May 2016.

If you would like more information on how to read these charts, or for more information on propagation in general, please visit <http://arrl.org/propagation>

Get your License or Upgrade

If you are interested in getting your first FCC license or upgrading your current amateur radio license, the Beaver Valley Amateur Radio Association holds VE Test sessions (Volunteer Examinations) the second Thursday of each month at the Nine One One center in Ambridge Pennsylvania prior to our BVARA Club meeting. If there is no meeting there is no test session. Please come take your test with us!



For more information, contact :
Rich Soltesz, K3SOM
(724) 847-0610
k3som@arrl.net

VE TEST SESSIONS

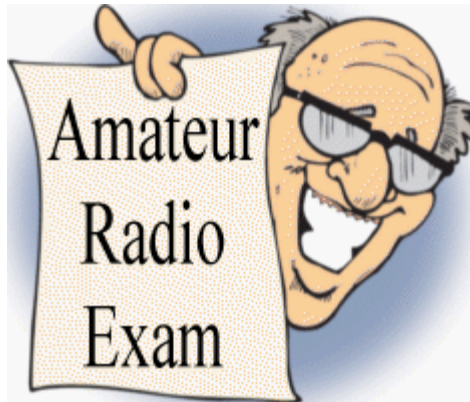
Beaver County Emergency Services Center 351 14th Street Ambridge, PA 15003
Tests begin promptly at 5 pm, May 12, 2016.
All classes of amateur radio license tests are administered.

ALL candidates MUST bring ALL of the following:

1. 2 forms of I.D. - one MUST be a photo I.D.
2. A pencil AND a pen with blue or black ink.
3. The original AND a photocopy of any valid ham license.
4. The original AND a photocopy of any C.S.C.E.
5. The test fee of \$15 - cash, check, or money order.

New License and Upgrades

BVARA VE Testing

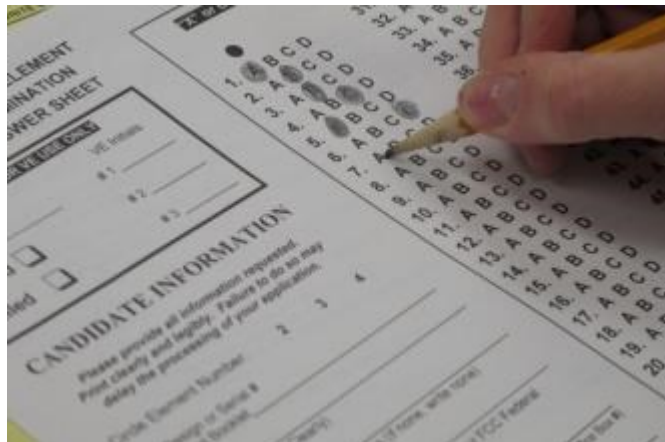


Ken Musgrave - KC3GZJ from Beaver, PA passed both his Technician Class and General Class exams at our April testing session.

Charles Young - KC3GZK from Beaver, PA passed his Technician Class exam at our April testing session.

Special thanks to Al Belardia - WA3GFM for sitting in for me for this session.

Rich - K3SOM



Membership Information

By becoming a BVARA member you help secure the future of Amateur Radio in Beaver County. Additionally, the BVARA receives a portion of each ARRL

membership you purchase!

Join the BVARA and ARRL

Sign up for:	Price	
<input type="checkbox"/> BVARA full membership	20.00	_____
<input type="checkbox"/> BVARA student membership	15.00	_____
<input type="checkbox"/> BVARA associate membership	10.00	_____
<input type="checkbox"/> BVARA Child under 21 at home membership	5.00	_____
<input type="checkbox"/> One year ARRL membership	49.00	_____
A Club Donation		_____
ARRL Member? Yes No	Total Enclosed	_____

Your License Class (If you have one.)

<input type="checkbox"/> Technician	Name _____
<input type="checkbox"/> General	Address _____
<input type="checkbox"/> Advanced	_____
<input type="checkbox"/> Extra Class	Email _____
	Phone _____
	Your Call sign _____
	You Signature _____

Make check or money order payable to:

The Beaver Valley Amateur Radio Association, P.O. Box 424

South Heights, Pa 15081

Hamfests & General Announcements



It's another one of "those months".

No Hamfests in Western Pennsylvania the month of May.

I think I will just go back to sleep...

Wait, when is that Breeze Shooters Hamfest?

Hamfests & General Announcements

62nd Annual

Largest Hamfest in the Tri-State Area

BreezeShooters

2016 HAMFEST and COMPUTER SHOW

Web Site <http://www.breezeshooters.org>

Email: hamfest2016@breezeshooters.org

NEW LOCATION!!!

BIG BUTLER FAIRGROUNDS

1127 New Castle Road (Rt 422)*Prospect PA 16052

**** ARRL WPA SECTION CONVENTION ****



HAMFEST QUESTIONS OR TABLE RESERVATIONS CALL JIM KB3IYS @ 412-600-1979

Sunday June 5, 2016 * 8am to 3pm

Indoor tables on first come first serve basis \$2000 per 8' table. CALL JIM @ 412-600-1979 or mail to KB3IYS@hotmail.com
P.O. Box 101018, Pittsburgh, PA 15237 - Table reservation Cut-off Date May 30th

Main Prize Drawing:

- | | |
|----------------------------------|--|
| 1st ICOM 7300 | 8 th AT-100 PRO 2 ANTENNA TUNER |
| 2nd Kenwood TS-590 | 9th BUDDY POLE |
| 3rd AMERITRON 811 | 10th Signal link |
| 4th YAESU FTM 400 | 11th IMAX 2000 |
| 5th KENWOOD V71 | 12th 100 FEET LMR 400 COAX |
| 6th MFJ 257-SWR ANTENNA ANALYZER | 13th SOLDERING KIT |
| 7th N3ZN KEY | 14th \$50 Cash Prize |

11 Half Hour prizes based on Admission tickets

HONDA 2KW GENERATOR WITH INVERTER

These tickets will be available at local hamfests prior to the Breezeshooters Hamfest. Check Breezeshooters.org for locations.

Winners need not be present for Main Prize or Generator Drawing. Main Prize Drawing at 3:00 pm - All prizes subject change due to availability

Icom, Yaesu, Kenwood & MFJ prizes from KJI Electronics

Admission \$ 5.00 donation per person. (Age 12 and over)

Tailgate/Plea Market spaces available \$ 10.00 for first space \$5 for each additional space

Fairgrounds open at 5:00pm Saturday June 4, 2016 for Vendor and Tailgate set up

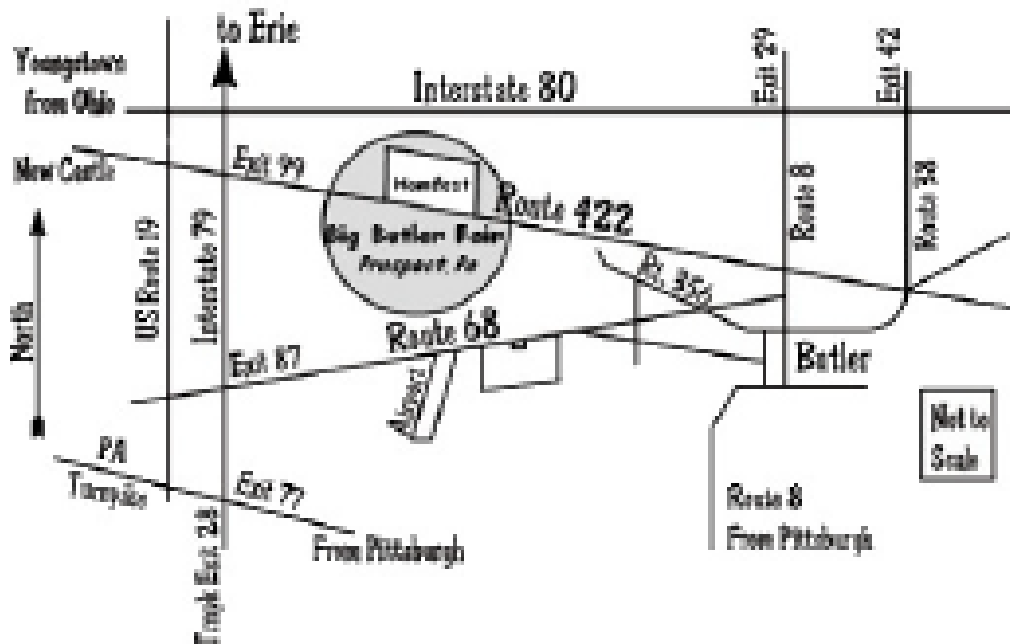
ADVANCED TICKET SALES

Main Prizes Drawing	\$2 Each	3 for \$5	7 for \$10	15 for \$20	40 for \$50	90 for \$100
Generator Drawing	\$5.00 ONLY 300 TICKETS SOLD					
ENCLOSED CHECK IN THE AMOUNT OF: \$	Send a Self-Addressed Stamped Envelope to: Advance Ticket Sales, Breezeshooters Hamfest PO Box 101018, Pittsburgh, PA 15237					
Make check Payable to the Breezeshooters, Inc. Mail Deadline is May 30, 2016. Ticket Stubs returned in your SASE!						
NAME:	CALL:		PHONE: () -			
ADDRESS:						
CITY	STATE		ZIP			

Hamfests & General Announcements

Sunday June 5, 2016* 8am to 3pm

Watch <http://www.breezeshooters.org> for details.



The NEW Location for 2016

BreezeShooters Hamfest

Radio Sport

Contest Corral – May 2016

Check for updates and a downloadable PDF version online at www.arrl.org/contests.

Refer to the contest websites for full rules, scoring information, operating periods or time limits, and log submission information.

Start Date-Time	Finish Date-Time	Bands	Contest name	Mode	Exchange	Sponsor's Website
1 1300	1 1900	3.5-7	AGCW QRP/QRP Party	CW	RST, serial, class	www.agcw.org/index.php/en
2 1900	2 2030	3.5	RSGB 80 Meter Club Championship, SSB	Ph	RS, serial	www.rsbbc.org/hf
3 0100	3 0300	3.5-28	ARIS Spartan Sprint	CW	RST, SPC, power	arsqp.blogspot.com
4 2300	5 0300	All	ME 33 Contest	CW Ph	RS(T), age, "ME" or "MEJ"	www.ztv.no/jpfisoda/33
5 1700	5 2100	28	NRAU 10 Meter Activity Contest	CW Ph Dig	RS(T), 6-char grid square	www.nrau.net/activity-contests
7 0001	8 2359	28	10-10 International Spring Contest, CW	CW	Name, mbr or "b," SPC	www.ten-ten.org/index.php
7 0800	7 1400	902 and up	Microwave Spring Sprint	CW Ph Dig	6-char grid square	sites.google.com/site/springvhfupprints
7 1200	8 1150	1.8-28	ARI International DX Contest	CW Ph Dig	RS(T), province or serial	www.ari.it
7 1200	8 1200	3.5-28, 144	FuAA Cup, PSK	Dig	RST, serial	www.site.urf.asso.fr
7 1200	8 2359	1.8-50	SKCC Weekend Sprintathon	CW	RST, SPC, name, mbr or "none"	www.skccgroup.com
7 1300	8 0700	1.8-144	7th Call Area QSO Party	CW Ph Dig	RS(T), SPC or 7th area 5-letter state/county code	ws7n.net/7QP
7 1500	8 0300	1.8-28	Indiana QSO Party	CW Ph	RS(T), county or SPC	www.hdxcc.org/inqprules.html
7 1700	8 2359	1.8-VHF	Delaware QSO Party	CW Ph	RS(T), county or SPC	www.fsarc.org/qsoparty/rules.htm
7 1700	7 2100	3.5-28	FISTS Spring Slow Speed Sprint	CW	RST, SPC, name or power	fistsna.org/operating.html#sprints
7 2000	8 2359	3.5-28	New England QSO Party	CW Ph	W1: RS(T), county, state. Non W1: RS(T), SPC	www.neqp.org/rules.html
11 1900	11 2030	3.5	RSGB 80 Meter Club Championship, Data	Dig	RST, serial	www.rsbbc.org/hf
12 0030	12 0230	3.5-14	NAQCC CW Sprint	CW	RST, SPC, mbr or power	naqcc.info/sprint201605.html
14 1200	15 1150	3.5-28	HPC World Wide DX Contest	Dig	RST, mbr or serial	pskclub.gr/contest
14 1200	15 1150	1.8-28	CQ-M International DX Contest	CW Ph	RS(T), serial	www.cq-m.ru/en/rules.html
14 1200	15 1200	3.5-28	VOLTA WW RTTY Contest	Dig	RST, serial, CQ Zone	www.contestvolta.it
14 1400	15 0200	3.5-28, 144	Arkansas QSO Party	CW Ph Dig	RS(T), county or SPC	www.arlqsoparty.com/#rules/c205y
14 1400	15 2359	3.5-28	MARAC USA QSO Party	CW	RST, state, county (or "DX")	countyhunter.com
14 1500	15 1500	3.5-28	Portuguese Navy Day Contest	CW Ph	Mbr or serial, CQ zone	www.nrs.pt
14 1700	14 2100	3.5-28	FISTS Spring Unlimited Sprint	CW	RST, SPC, name, mbr or power	fistsna.org/operating.html#sprints
14 2300	15 0300	50	50 MHz Spring Sprint	CW Ph Dig	6-char grid square	sites.google.com/site/springvhfupprints
15 1000	15 1400	7	WAB 7 MHz Phone	Ph	RS, serial, WAB square or country	wab.internip.net/Contests.php
15 1300	15 1659	3.5-14	UA2 QSO Party	CW Ph	RS(T), RDA ID or serial	www.qrz.ru/contest/detail/382.html
16 0100	16 0300	1.8-28	Run for the Bacon QRP Contest	CW	RST, SPC, mbr or power	fpqp.org/pigun
19 1900	19 2030	3.5	RSGB 80 Meter Club Championship, CW	CW	RST, serial	www.rsbbc.org/hf
20 1800	20 2150	1.8-3.5	Slobzhansky Sprint Contest	CW Ph	Serial, Administrative District	tdr.at.ua/index/rules2015/0-13
21 0600	21 2100	3.5-28	UN DX Contest	CW Ph	RS(T), District Code or serial	undxc.kz/bez-rubriki/2015-2
21 0800	22 1100	3.5	NZART Sangatar Shield Contest	CW	ZL: RST, branch, pow. Non-ZL: RST, serial	www.nzart.org.nz/activities
21 1200	22 1200	3.5-28	Aegean RTTY Contest	Dig	RST, serial	www.aegeandxgroup.gr
21 1200	22 1200	3.5-28	EU PSK DX Contest	Dig	RST, EU area code or serial	www.eupsk.com
21 1200	22 1200	1.8-28	His Majesty King of Spain Contest, CW	CW	RST, province or serial	concursos.ure.es/en
21 1600	21 2150	1.8-28	Fold Hill Sprint	Dig	RST, mbr, SPC, grid	sites.google.com/site/foldhillclub
21 2100	22 0200	3.5	Baltic Contest	CW Ph	RS(T), serial	www.lrsf.lt/bocontest/english
25 0000	25 0200	1.8-28	SKCC Sprint	CW	RST, SPC, name, mbr or power	www.skccgroup.com
28 0000	29 2359	1.8-28	CQ WW WPX Contest, CW	CW	RST, serial	www.cqwpw.com/rules.htm
28 0800	28 2359	3.5-28	Portuguese Navy Day Contest, Dig	Dig	Mbr or serial, CQ zone	www.nrs.pt
29 1300	29 1600	3.5-14	SARL Digital Contest	Dig	RST, serial	www.sarl.org.za

All dates refer to UTC and may be different from calendar dates in North America. Times given as AM or PM are local times and dates. No contest activity occurs on the 60, 30, 17, and 12 meter bands. Mbr = Membership number. Serial = Sequential number of the contact. S/P/C = State, Province, DXCC Entity. XE = Mexican state. Data for Contest Corral is maintained on the WA7BNM Contest Calendar at www.homucopia.com/contestcal and is extracted for publication in QST 2 months prior to the month of the contest. The ARRL gratefully acknowledges the support of Bruce Horn, WA7BNM, in providing this service. Listings in blue indicate contests sponsored by ARRL or NCJ. The latest time to make a valid contest QSO is the minute listed in the "Finish Time" column.

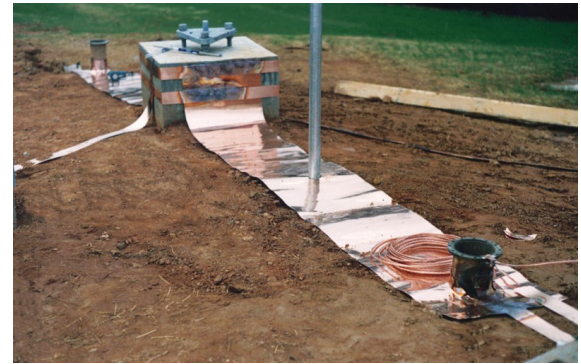
Bits and Pieces

It's Spring time here in Western Pennsylvania. Finally the weather is getting nice. It's time to start our outside projects. With any project, it is extraordinarily important to slow down and think about safety. Let that sink in... Our hobby is fun and habit forming. Form a habit of thinking safety first. Always



take time to think things through with a particular emphasis on safety. If in doubt, ask another Ham their safety opinion. Any time you think what you're about to undertake is unsafe, STOP. Re-think. This would be a great time to invite other ham friends to come have a "Radio Party" at your station. Providing the food for your party is far cheaper than any injury from unsafe acts connected to your radio hobby.

Spring is a great time to check all the grounds and grounding joints. Starting with the ground system is important. We may be thinking about all the other more glamorous items that make up our stations like radios, microphones, antenna tuners, antennas, and etc. Grounding is the important first foundation building block in your station. A poor or



bad ground system can lead to many difficulties. By ensuring a good ground system we head off problems further down the line in our station systems. A poor ground system will limit our stations. They will never live up to their highest potential.

Some Interesting Links



65 Great Things About Ham Radio http://www.cq-amateur-radio.com/cq_great_things.html

How to, Using Ham Radio <http://www.instructables.com/id/How-to-Talk-to-Someone-Using-Ham-Radio/>

Guide to Amateur Radio for New Hams <http://www.eham.net/newham/>

Amateur Radio Satellites <http://www.n2yo.com/satellites/?c=18>

Digital Radio link <http://wb8nut.com/digital/>

Useful Radio Site, general info <http://www.radioreference.com/>

For All Radio Operators



The Amateur's Code

CONSIDERATE ...never knowingly operates in such a way as to lessen the pleasure of others.

LOYAL ...offers loyalty, encouragement and support to other amateurs, local clubs, and the American Radio Relay League, through which Amateur Radio in the United States is represented nationally and internationally.

PROGRESSIVE ...with knowledge abreast of science, a well-built and efficient station and operation above reproach.

FRIENDLY ...slow and patient operating when requested; friendly advice and counsel to the beginner; kindly assistance, cooperation and consideration for the interests of others. These are the hallmarks of the amateur spirit.

BALANCED ...radio is an avocation, never interfering with duties owed to family, job, school or community.

PATRIOTIC ...station and skill always ready for service to country and community.



It will be here soon.
Field Day 25-26 June 2016