

# THE eQRM

NOVEMBER 2019



## The BVARA in Beaver County Pennsylvania

Beaver Valley Amateur Radio Association

W3SGJ

Repeater 145.310 PL 131.8

On the Cover : The BVARA wishes you a very happy and peaceful Thanksgiving.

## Inside This Edition

Who We Are	3	Radio Sport	11
This Month	4	Bits and Pieces	12
Propagation	6	It's Your Dime	13
Get a License or Upgrade	7		
New License and Upgrades	8		
Membership	9		
Hamfests & General Announcements	10		

### Check into our nets

**Wednesday 2 Meter**

**8:30PM on 145.310 MHz PL 131.8**

**Wednesday 10 Meter**

**9:00PM on 28.470 MHz**

The eQRM is a publication of the Beaver Valley Amateur Radio Association (BVARA) and is Copyright 2010 - 2019. All material presented in this publication is not necessarily the views of the American Radio Relay League (ARRL), BVARA, or members of the said organizations. If you would like to contact the editor of the eQRM, please email David at [kc3bxc.73@gmail.com](mailto:kc3bxc.73@gmail.com). Please visit us online at [www.W3SGJ.org](http://www.W3SGJ.org). To subscribe to our newsletter, please visit [W3SGJ.org/newsletter.php](http://W3SGJ.org/newsletter.php)

# Who We Are

## 2019 BVARA OFFICERS

President: Jack Spencer, KZ3Z

Vice President: Dan Grazulis, KB3VSP

2nd Vice Pres.: Doug Hanna, N4YKQ

Treasurer: Pam Spencer, W3PMS

Secretary: Norm Trunick, K3NJT

Director: Tony Pavilonis, W6PEF

Director: Bob Winkle, N3AZZ

Trustee: Rich Soltesz, K3SOM

## MONTHLY MEETINGS

E-Board meetings are now held the Saturday before the monthly club meeting.

VE testing begins at 5:00 PM.

Regular meetings are at 6:30 PM

All meetings are held at the  
Beaver County  
Emergency Services Center  
351 14th Street  
Ambridge, PA 15003  
on the second Thursday of every month  
(unless otherwise stated).

## Club Meetings 2019

Nov 14

Dec 07 Christmas Party  
(no club meeting)

Jan 09 2020

Feb 13

Mar 12

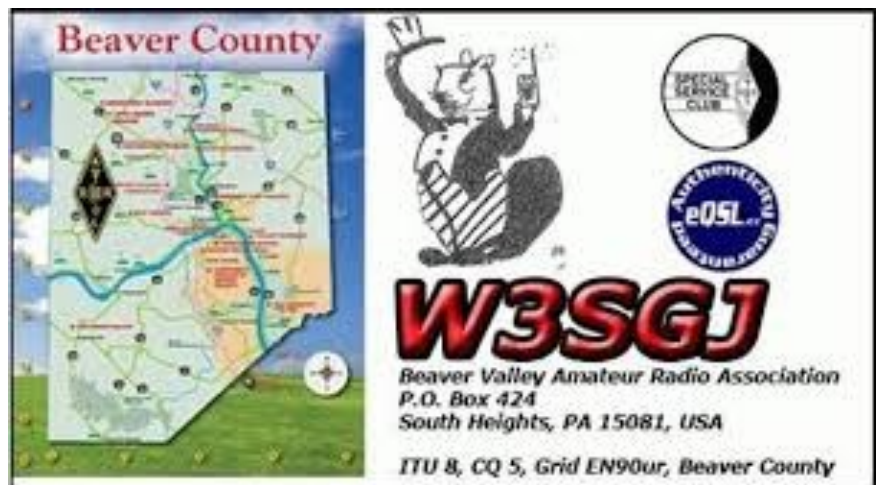
Apr 08

May 14

Jun 11

Jul 09

Aug Club Picnic TBA



# This Month

## *This Month:*

### *Speaker:*

Club Members and You

### *Topic:*

Roundtable Help with Questions from You

### *Including:*

New to ham radio? Are you wondering about new digital modes with your equipment? Maybe you have questions about antennas, setting up your station, how to make an HF contact, or how to interface your computer to your ham equipment. Perhaps your questions are even more basic like rules and regulations, which bands are best to use, where to find operating resources like band plans, what to do after you make contacts and how do you save or conveniently create a useful log. Maybe you have problems with annoying noise or need help in selecting some equipment. The list goes on and on . . .

We've been approached as a club to provide help in answering your questions. On November 14<sup>th</sup> at our monthly club meeting, a roundtable discussion with your participation is planned. You don't have to be a member of the BVARA; you may just have a question or two that's been bothering you about our ham radio hobby. In fact, you could be new to the hobby or a seasoned veteran with questions. Whether it's technical or about rules/regulations or operating or equipment, we want to help you. We'll start our roundtable around 7:15 PM at the Beaver County Emergency Services Center at 351 14th Street, Ambridge, PA 15003. Please join us with your questions!

### *Rich's Background:*

K3SOM - Extra Class Ham, Licensed since 1962, VE,  
B.S. Electrical Engineering

Steel sharpens steel,  
come get sharpened or  
sharpen a fellow Ham.



# More this Month

## Weekly

The Freedom Square Diner in Monaca has a great wait staff. Come let them take your order and serve you something delicious.

Thursday Morning Breakfast  
(or you can have lunch)



The BVARA meets every Thursday at the Freedom Square Diner in Center Township, just to the right of the Cinemark Center Township Marketplace at 09:30 AM. All radio amateurs and those interested in amateur radio are encouraged to come join us at our Thursday morning breakfast.

## See you Thursday at



The eQRM urges all Beaver County licensed amateurs to participate in the County's RACES and ARES programs.

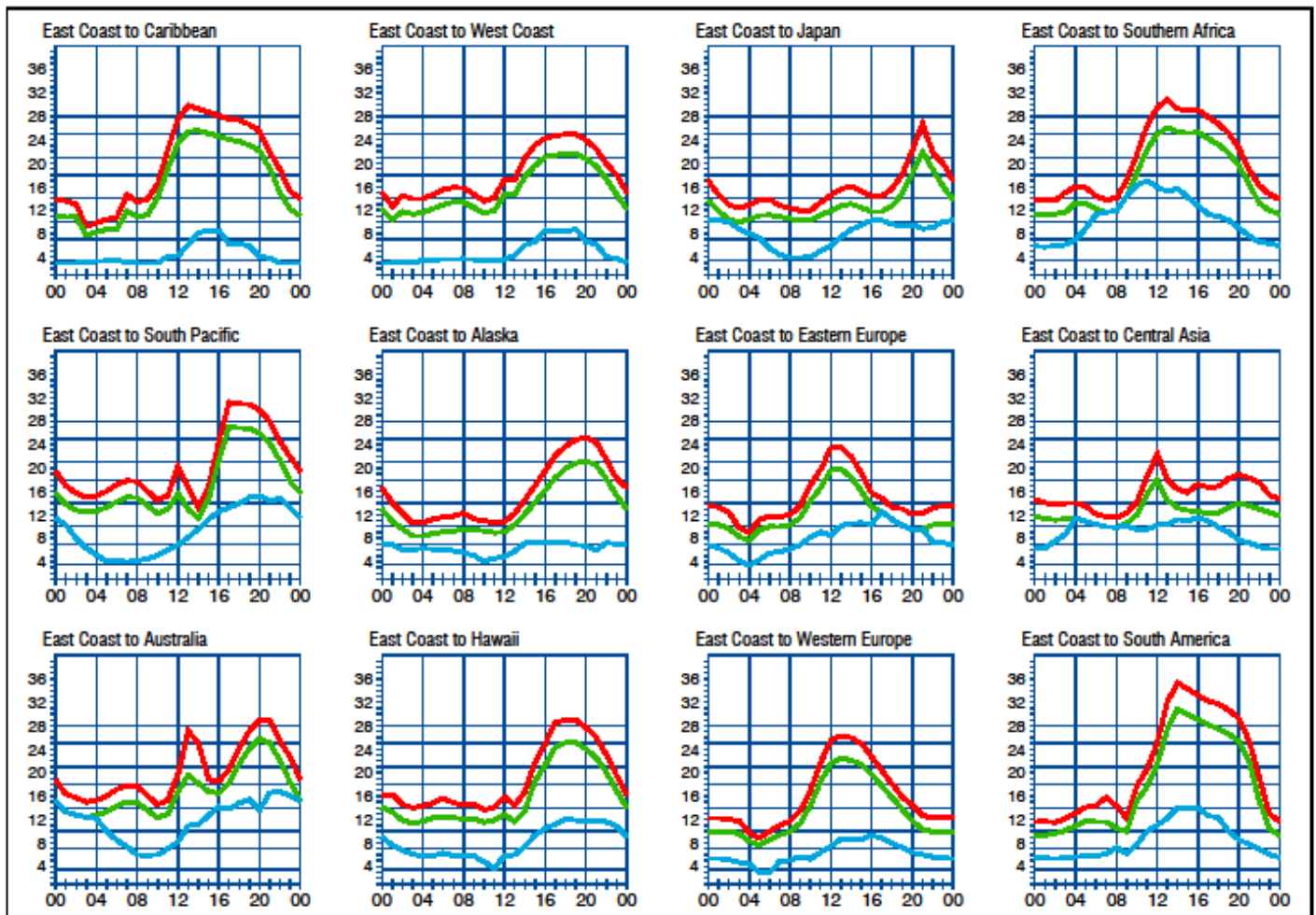
Any Beaver County Amateur that is interested in participating in the RACES/ARES programs can do so by checking into the Beaver County Public Service Net which meets every Monday evening at 8:30 PM local time on the N3TN 146.850 MHz repeater (131.8 PL)

### RACES / ARES

The eQRM urges all county hams to participate.



# Propagation



**When are the bands open?** These charts, generated using CAPman, show probabilities for average HF propagation in the month of **November** for the paths indicated. The horizontal axes show Coordinated Universal Time (UTC), and the vertical axes frequency in MHz. On 10% of the days of this period, the highest frequencies propagated will be at least as high as the upper red curves (HPF, highest possible frequency) and on 50% of the days they will be at least as high as the green curves (MUF, classical maximum usable frequency). The blue curves show the lowest usable frequency (LUF) for a 1500-W CW transmitter. For SSB or a lower transmitter power, the LUF will be somewhat higher than the blue curves indicate. See Oct 1994 QST, pp 27-30, and Feb 1995 QST, pp 34-36, for more details. The predictions assume an observed 2800-MHz solar flux value of 71. This is a Very Low level of solar activity. See the detailed propagation tables on *The ARRL Antenna Book CD-ROM*.

**ARRL**  
The national association for  
**AMATEUR RADIO**

## PROPAGATION

The East Coast propagation chart listed here is for November 2019.

If you would like more information in general, please visit <http://www.arrl.org/propagation>

# Get your License or Upgrade

If you are interested in getting your first FCC license or upgrading your current amateur radio license, the Beaver Valley Amateur Radio Association holds VE Test sessions (Volunteer Examinations) the second Thursday of each month at the Nine One One center in Ambridge Pennsylvania prior to our BVARA Club meeting. If there is no meeting there is no test session. Please come take your test with us!

For more information, contact :  
Rich Soltesz, K3SOM  
(724) 847-0610  
k3som@arrl.net



## VE TEST SESSIONS

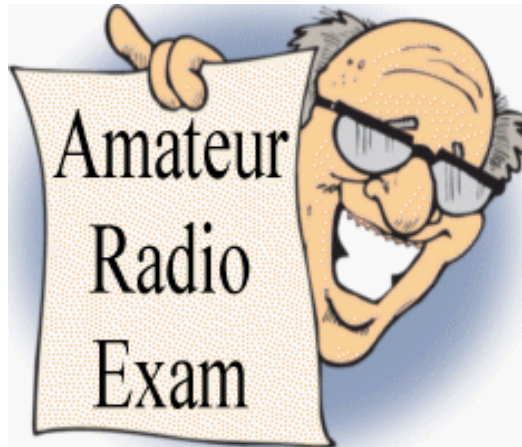
Beaver County Emergency Services Center 351 14th Street Ambridge, PA 15003.  
Tests begin promptly at 5 pm on the same day as BVARA Club Meetings  
(the second Thursday of the month).  
All classes of amateur radio license tests are administered.

ALL candidates MUST bring ALL of the following:

1. 2 forms of I.D. - one MUST be a photo I.D.
2. A pencil AND a pen with blue or black ink.
3. The original AND a photocopy of any valid ham license.
4. The original AND a photocopy of any C.S.C.E.
5. The test fee of \$15 - cash, check, or money order.

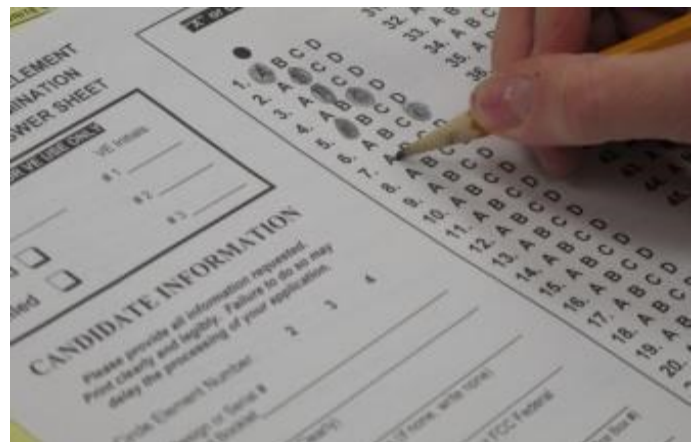
# New License and Upgrades

BVARA VE Testing



Here are the successful participants in our VE process this month :

We had no candidates who tested for a license or for an upgrade to their license.





# Membership Information

By becoming a BVARA member you help secure the future of Amateur Radio in Beaver County. Additionally, the BVARA receives a portion of each ARRL

membership you purchase!

## Join the BVARA and ARRL

Sign up for:	Price	
<input type="checkbox"/> BVARA full membership	25.00	_____
<input type="checkbox"/> BVARA student membership	15.00	_____
<input type="checkbox"/> BVARA associate membership	10.00	_____
<input type="checkbox"/> BVARA Child under 21 at home membership	5.00	_____
<input type="checkbox"/> One year ARRL membership	49.00	_____
A Club Donation		_____
ARRL Member?    Yes    No	Total Enclosed	_____

Your License Class (If you have one.)

<input type="checkbox"/> Technician	Name _____
<input type="checkbox"/> General	Address _____
<input type="checkbox"/> Advanced	_____
<input type="checkbox"/> Extra Class	Email _____
	Phone _____
	Your Call sign _____
	Your Signature _____

Make check or money order payable to:

The Beaver Valley Amateur Radio Association, P.O. Box 424

South Heights, Pa 15081

# Hamfests & General Announcements



**WACOM 2019 HAMFEST**  
**Washington Amateur Communications Inc.**  
**SUNDAY, NOVEMBER 3rd 2019**  
**WASHINGTON COUNTY FAIRGROUNDS**  
**2151 North Main St.**  
**WASHINGTON, PA 15301**

**8:00 A.M – 3:00 P.M—Admission \$5.00**

Doors open early for VENDOR SETUP Saturday November 2<sup>nd</sup> st 6:00 p.m.  
Talk in on 146.790 City-147.285 East-147.390 North-145.250 West -147.315 South- All PI-131.8

**MAJOR VENDORS Over 250 tables**

**MAIN PRIZES:**

**1<sup>st</sup> Icom IC-7300**

**2<sup>nd</sup> Icom IC-2730A**

**3<sup>rd</sup> Yaesu FTM-3200DR**

**4<sup>th</sup> Kenwood TM-281A**

**BLACK BOX PRIZE'S ONLY 50 TICKETS Sold**

**MAIN DRAWING AT 1:00 P.M. NEED NOT BE PRESENT TO WIN**

**CONTACT FOR HAMFEST TABLES [KC3TOM@arrl.net](mailto:KC3TOM@arrl.net) 412-414-5627**

**Vendor Forms located at [www.wacomarc.org](http://www.wacomarc.org) under Hamfest tab**  
**WE WILL Sell out ALL TABLE SPACE PLEASE CALL EARLY**

**6Ft TABLES SUPPLIED, cost \$12.00 ea. - Discount reserve more than (4) \$10.00ea.**

**ADMISSION not INCLUDED ON TABLES rentals**

***VE TESTING TIME 9:00am***

***BREAKFAST AND LUNCH WILL BE AVAILABLE***

***DOOR PRIZES—YL PRIZE—DX CARD CHECKER***

***THE MEADOWS CASINO & Tanger Outlets less than 2 miles***

***Send all vendor payments to address below for tables***

**Please include vendor form and make checks payable to: WACOM c/o Tom Wright KC3TOM**  
**117 Perry Road, Burgettstown, PA 15021**

# Radio Sport

Bruce Draper, AA5B, aa5b.coral@gmail.com

## Contest Corral

## November 2019

Check for updates and a downloadable PDF version online at [www.arrl.org/contests](http://www.arrl.org/contests).

Refer to the contest websites for full rules, scoring information, operating periods or time limits, and log submission information.

	Start Date-Time	Finish Date-Time	Bands	Contest Name	Mode	Exchange	Sponsor's Website
1	0600	1 0859	3.5, 7	Silent Key Memorial Contest	CW	RST, ITU Zone or SK call sign you wish to recognize	<a href="http://www.skmc.hafen/rules.html">www.skmc.hafen/rules.html</a>
2	0600	2 1800	3.5-28	IPARC Contest, CW	CW	RST, serial, "IPA" and state	<a href="http://www.iparc.de">www.iparc.de</a>
2	1200	3 1200	1.8-28	Ukrainian DX Contest	CW Ph	RS(T), 2-letter oblast or serial	<a href="http://urdx.org/rules.php?english">urdx.org/rules.php?english</a>
2	2100	4 0259	1.8-28	ARRL Sweepstakes Contest, CW	CW	Serial, Precedence (Q/AB/UM/S), your call, check, section	<a href="http://www.arrl.org/sweepstakes">www.arrl.org/sweepstakes</a>
3	0600	3 1800	3.5-28	IPARC Contest, SSB	Ph	RST, serial, "IPA" and state	<a href="http://www.iparc.de">www.iparc.de</a>
3	0800	3 1200	Any	EANET Sprint	CW Ph Dig	RS(T)	<a href="http://fedex.org/news/?news=20191103">fedex.org/news/?news=20191103</a>
3	0900	3 1700	3.5-28	High Speed Club CW Contest	CW	RST, mbr or "NM"	<a href="http://www.highspeedclub.org">www.highspeedclub.org</a>
4	2000	4 2059	3.5	RSGB FT4 Contest Series	Dig	Signal Report, 4-char grid square	<a href="http://www.rsgbc.org/hf">www.rsgbc.org/hf</a>
5	0200	5 0400	3.5-28	ARS Spartan Sprint	CW	RST, SPC, power	<a href="http://arsqp.blogspot.com">arsqp.blogspot.com</a>
6	2000	6 2100	3.5	UKEICC 80-Meter Contest	Ph	4-char grid square	<a href="http://www.ukaicc.com">www.ukaicc.com</a>
7	1800	7 2200	28	NRAU 10-Meter Activity Contest	CW Ph Dig	RS(T), 6-char grid square	<a href="http://www.nrau.net/activity-contests">www.nrau.net/activity-contests</a>
7	2000	7 2200	1.8-50	SKCC Sprint Europe	CW	RST, SPC, name, mbr or power	<a href="http://www.skccgroup.com">www.skccgroup.com</a>
9	0000	10 2359	3.5-28	WAE DX Contest, RTTY	Dig	RS, serial	<a href="http://darc.de/darc-club/referat/referat-conteste">darc.de/darc-club/referat/referat-conteste</a>
9	0000	11 2359	1.8-7	PODXS 070 Club Triple Play Low Band Sprint	Dig	RST, SPC	<a href="http://www.podxs070.com">www.podxs070.com</a>
9	0001	10 2359	28	10-10 International Fall Contest, Digital	Dig	Name, mbr or "0," SPC	<a href="http://www.ten-ten.org">www.ten-ten.org</a>
9	0700	10 1300	3.5-28	JIDX Phone Contest	Ph	RST, Prefecture number or CQ zone	<a href="http://www.jidx.org/jidxrule-e.html">www.jidx.org/jidxrule-e.html</a>
9	1000	10 1000	50-144, 432, 1296	SARL VHF/UHF Analogue Contest	CW Ph	RS(T), 6-char grid locator	<a href="http://www.sarl.org.za">www.sarl.org.za</a>
9	1200	10 1200	1.8-28	OKJOM DX Contest, CW	CW	RST, 3-letter district code or serial	<a href="http://okjoms.ok.cz/index.php?page=english">okjoms.ok.cz/index.php?page=english</a>
9	1200	10 2359	1.8-50	SKCC Weekend Sprintathon	CW	RST, SPC, name, mbr or "none"	<a href="http://www.skccgroup.com">www.skccgroup.com</a>
9	1900	11 0500	1.8-50, 144, 432	CQ-WE Contest	CW Ph Dig	Name, location code, years of service	<a href="http://cqwe.cboh.org/rules.html">cqwe.cboh.org/rules.html</a>
9	2300	17 2300	1.8-7	AWA Bruce Kelley 1929 QSO Party	CW	RST, name, QTH, equipment year and type, power	<a href="http://www.antiquewireless.org">www.antiquewireless.org</a>
10	0000	10 0400	3.5-14	North American SSB Sprint Contest	Ph	Other station's call, your call, serial, name, SPC	<a href="http://ssbsprint.com/rules">ssbsprint.com/rules</a>
11	0100	11 0300	1.8-28	4 States QRP Group Second Sunday Sprint	CW Ph	RS(T), SPC, mbr or power	<a href="http://www.4sqrp.com">www.4sqrp.com</a>
11	2000	11 2130	3.5	RSGB 80-Meter Autumn Series, Data	Dig	Other station's call, your call, serial, name	<a href="http://www.rsgbc.org/hf">www.rsgbc.org/hf</a>
15	1800	15 2200	3.5	YO International PSK31 Contest	Dig	RST, serial, country or YO county	<a href="http://www.yo3qr.org/Rules.htm">www.yo3qr.org/Rules.htm</a>
16	0000	17 2359	50-1296	ARRL EME Contest	CW Ph Dig	Signal report	<a href="http://www.arrl.org/eme-contest">www.arrl.org/eme-contest</a>
16	1200	17 1200	3.5-28	LZ DX Contest	CW Ph	RS(T), 2-letter district or ITU Zone	<a href="http://lzdxbfbs.org/rulesen.html">lzdxbfbs.org/rulesen.html</a>
16	1800	16 2359	1.8	All Austrian 180-Meter Contest	CW	RST, serial, district code (of OE)	<a href="http://www.oevsv.at">www.oevsv.at</a>
16	1700	17 0100	1.8	REF 160-Meter Contest	CW	RST, serial, Department Code	<a href="http://concours-r-e-f.org/reglements/actuels">concours-r-e-f.org/reglements/actuels</a>
16	1900	16 2059	1.8-50	Field Hill Sprint	Dig	RST, mbr, SPC, 4-char grid	<a href="http://sites.google.com/site/fieldhillclub">sites.google.com/site/fieldhillclub</a>
16	1900	16 2300	1.8	RSGB 1.8 MHz Contest	CW	RST, serial, District code (if RSGB)	<a href="http://www.rsgbc.org/hf">www.rsgbc.org/hf</a>
16	2100	18 0259	1.8-28	ARRL Sweepstakes Contest, SSB	Ph	Serial, Precedence (Q/AB/UM/S), your call, check, section	<a href="http://www.arrl.org/sweepstakes">www.arrl.org/sweepstakes</a>
17	1300	17 1700	3.5, 7	Homebrew and Oldtime Equipment Party	CW	RST, serial, class	<a href="http://qpcc.de/contestrulesshotz.html">qpcc.de/contestrulesshotz.html</a>
18	0200	18 0400	1.8-28	Run for the Bacon QRP Contest	CW	RST, SPC, mbr or power	<a href="http://qpccontest.com/pigrun">qpccontest.com/pigrun</a>
19	0130	19 0330	3.5-14	NAQCC CW Sprint	CW	RST, SPC, mbr or power	<a href="http://naqcc.info">naqcc.info</a>
20	2000	20 2130	3.5	RSGB 80-Meter Autumn Series, SSB	Ph	Other station's call, your call, serial, name	<a href="http://www.rsgbc.org/hf">www.rsgbc.org/hf</a>
23	0000	24 2359	1.8-28	CQ Worldwide DX Contest, CW	CW	RST, CQ Zone	<a href="http://www.cqww.com">www.cqww.com</a>
27	0000	27 0200	1.8-28	SKCC Sprint	CW	RST, SPC, name, mbr or power	<a href="http://www.skccgroup.com">www.skccgroup.com</a>
27	2000	27 2100	3.5	UKEICC 80-Meter Contest	CW	4-char grid square	<a href="http://www.ukaicc.com">www.ukaicc.com</a>
28	2000	28 2130	3.5	RSGB 80-Meter Autumn Series, CW	CW	Other station's call, your call, serial, name	<a href="http://www.rsgbc.org/hf">www.rsgbc.org/hf</a>
30	1200	1 1159	1.8-28	Russian WW MultiMode Contest	CW Ph Dig	RST(Q), 2-character oblast or serial	<a href="http://www.rdrclub.ru/news-radio">www.rdrclub.ru/news-radio</a>

All dates refer to UTC and may be different from calendar dates in North America. Contests are not conducted on the 60-, 30-, 17-, or 12-meter bands. Mbr = Membership number. Serial = Sequential number of the contact. SPC = State, Province, DXCC Entity. XE = Mexican state. Listings in blue indicate contests sponsored by ARRL or NCJ. The latest time to make a valid contest QSO is the minute listed in the "Finish Time" column. Data for Contest Corral is maintained on the WA7BNM Contest Calendar at [www.contestcalendar.com](http://www.contestcalendar.com) and is extracted for publication in QST 2 months prior to the month of the contest. ARRL gratefully acknowledges the support of Bruce Horn, WA7BNM, in providing this service.

# Bits and Pieces

Hello All,

I wish you a very Happy and Peaceful Thanksgiving along with the BVARA! I am looking forward to good food and a great visit with family & friends. I pray you the same. May this be your best Thanksgiving yet!

I have been playing a game of antenna pole installation, rain and dirt cave-in when it comes to installing my phone pole for my new HF antenna. I bail the water out of the hole, remove the caved in dirt and get set up to have some help and, and, and then the rain has a different plan for me. This is getting ridiculous! I got the weather to cooperate the other day and then the tractor got sick. I am stubbornly determined to get this antenna up! It may be snowing and blowing but this pole is going in the ground. Stay tuned...



I talked to Rich Soltesz, K3SOM the other day. He told me that last weekend the radio bands were full of activity on all of the HF contest bands. There was a worldwide radio contest going on. He went on to say it was so much fun! Rich said many hams think the bands are dead because of the lack of sunspots. Not true. There just aren't many hams transmitting. My advice, get on the air! You won't know who is listening till you call CQ. I suspect there are a lot of hams listening but not initiating a QSO. Get on the air. Don't wait for spotting software to let you know someone is on the air. Come on, get the lead out, get on the air and call CQ. See if anyone comes back to you. Be patient, deliberate and have a great time.

This month at the BVARA Club meeting we are going to have a "Hams of the Round Table". I personally invite you to come. This is your opportunity to ask/receive as well as give information about our radio hobby. We will have a very informal Round Table discussion. Do not be intimidated! No one knows it all. Please come if just for me. I need all the experience and expertise you have to share with me. I am writing a list of things I want to ask and discuss right now so I am prepared before the round table meeting. Please come. You can ask and/or you can teach. This promises to be a really great time. Come to the Club meeting November 14<sup>th</sup> for the round table event. This Club meeting will be the last one for the year. We will be having the Christmas Party in December. We will have our next time together in January of 2020.

Till next month 73 KC3BXC clear but I'll be listening...

Be courteous on the air, be safe and have fun with your hobby.

# It's Your Dime

Remember back when you could communicate by "Pay Phone" for ten cents? This page is for anyone who wants to communicate with the BVARA community and beyond. Please send me your article that you would like posted on this page. Please, only topics and language in good taste. As the editor I reserve the option to post it or ignore it. Send your dime to me at: [kc3bxc.73@gmail.com](mailto:kc3bxc.73@gmail.com)



**I need your help :**



As described last month, we need more club photos from previous years and previous club events so that we can begin adding club depth by including these photos in our newsletter. All photos will be quickly returned to you after we digitize them. Please contact Rich - K3SOM with or for additional information.