

THE eQRM

OCTOBER 2016



The BVARA in Beaver County Pennsylvania

Beaver Valley Amateur Radio Association

W3SGJ

Repeater 145.310 PL 131.8

On the cover :

A beautiful photo of October . Fall leaves remind us that winter is on it's way.

Inside this edition

Who We Are	3	Hamfests & General Announcements	10
This Month	4		
Propagation	6	Radio Sport	12
Get a license or Upgrade	7	Bits and Pieces	13
New license and Upgrades	8	Interesting links	14
Membership	9		

Check into our nets

Wednesday 2 Meter

8:30PM on 145.310 MHz PL 131.8

Wednesday 10 Meter

9:00PM on 28.470 MHz

The eQRM is a publication of the Beaver Valley Amateur Radio Association (BVARA) and is Copyright 2010 - 2016. All material presented in this publication is not necessarily the views of the American Radio Relay League (ARRL), BVARA, or members of the said organizations. If you would like to contact the editor of the eQRM, please email David at kc3bxc.73@gmail.com. Please visit us online at www.W3SGJ.org. To subscribe to our newsletter, please visit W3SGJ.org/newsletter.php

Who We Are

2016 BVARA OFFICERS

President: Jack Spencer, KZ3Z

Vice President: Dick Hanna, K3VYY

2nd Vice Pres.: Rob Miller, N3OJL

Treasurer: Pam Spencer, W3PMS

Secretary: Norm Trunick, K3NJT

Director: Bob Winkle, N3AZZ

Director: Bob Croft, KB3RHN

Trustee: Rich Soltesz, K3SOM



MONTHLY MEETINGS

E-Board meetings are now held the Saturday before the monthly club meeting.

VE testing begins at 5:00 PM.

Regular meetings are at 6:30 PM

All meetings are held at
Beaver County
Emergency Services Center
351 14th Street
Ambridge, PA 15003
on the second Thursday of every month
(unless otherwise stated).



2016 MEETING DATES

Oct 13

Nov 10

Dec no meeting

Christmas Party Dec 3rd

2017 MEETING DATES

Jan 12

Feb 09

Mar 09

Apr 13

May 11



This Month

BVARA Club Feature Presentation:

This Month:

Speaker:

Rich Soltesz
K3SOM

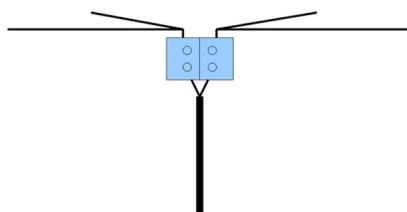
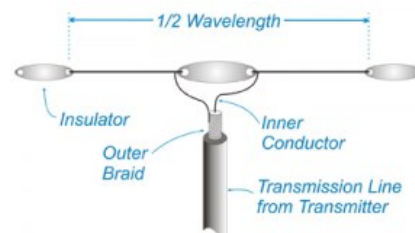
Topic:

Dipoles for Beginners

Including:

Continuing with our BVARA Presentation Series this year, our topic this month deals with an area that beginning hams will find very helpful. We'll show you how to build a basic dipole for the HF bands.

We'll begin by taking a look at what performance to expect from a basic 40 meter dipole mounted at a half wavelength above ground. We'll examine an actual center connection for this antenna and how to construct it. Then we'll look at what to expect if you can't put it up at 68 feet, but much lower. We'll talk about how to adjust the length of the dipole at that different height to get the best match to your transceiver. We'll also talk about ways to eliminate radiation from the coax feedline as well as why that is important.



But wait, there's more! We'll look at how to construct a fan dipole for two HF bands. Whether you are a beginner or a veteran ham, this is one exciting presentation that you won't want to miss.

Rich's Background:

Extra Class Ham, Licensed since 1962, VE,
B.S. Electrical Engineering

More this Month

Weekly

The Monaca Steak and Shake has a great wait staff. Come let them take your order.

Thursday Morning Breakfast
(or you can have lunch)



The BVARA meets every Thursday at Steak 'n Shake in Center Township, by the Beaver Valley Mall, at 10:00 AM. All radio amateurs and those interested in amateur radio are encouraged to come join us at our Thursday morning breakfast.

See you
Thursday at



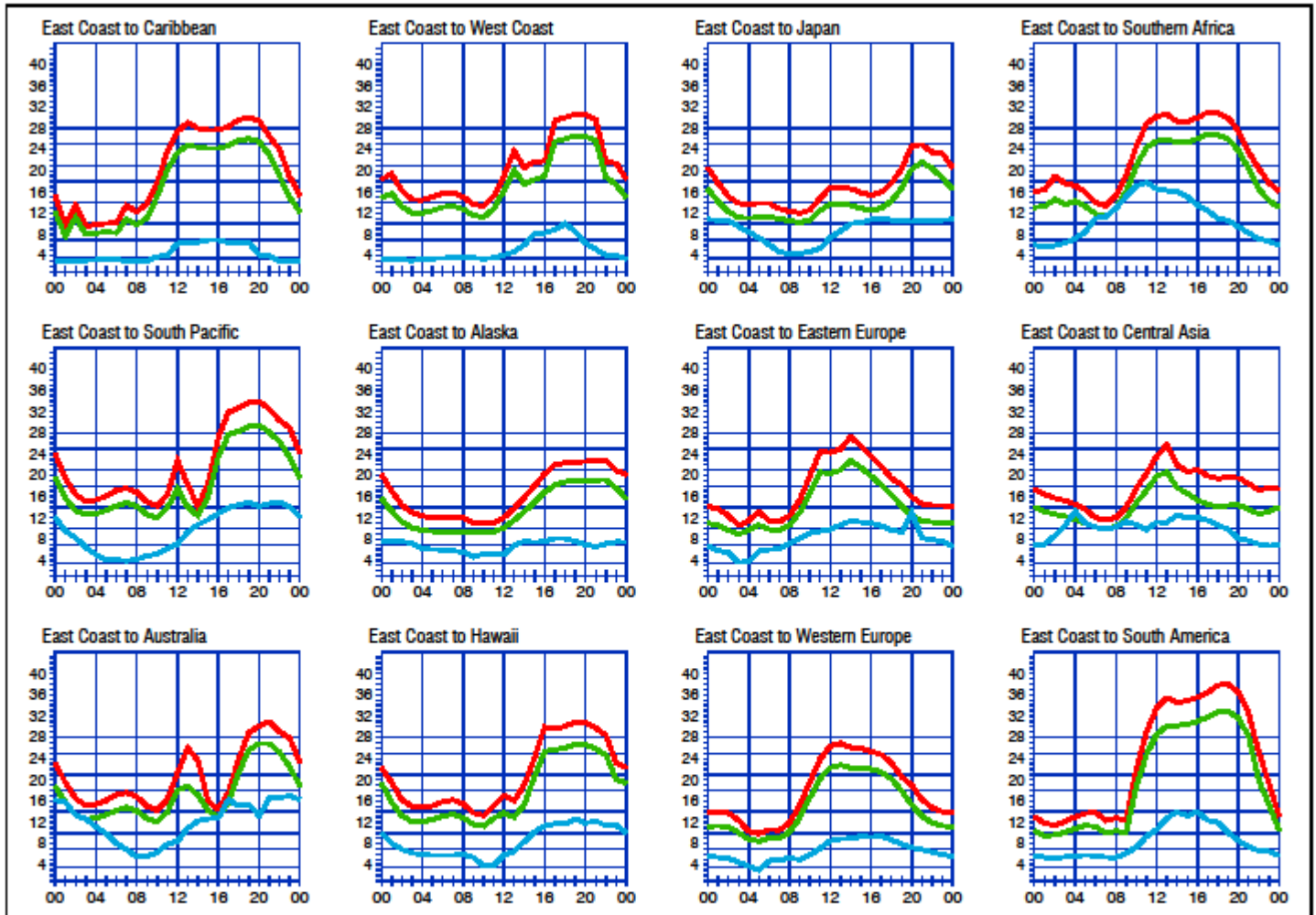
The eQRM urges all Beaver County licensed amateurs to participate in the County's RACES and ARES programs.

Any Beaver County Amateur that is interested in participating in the RACES/ARES programs can do so by checking into the Beaver County Public Service Net which meets every Monday evening at 8:30 PM local time on the N3TN 146.850 MHz repeater (131.8 PL)

RACES / ARES
The eQRM Urges All County Hams to Participate.



Propagation



When are the bands open? These charts, generated using CAPman, show probabilities for average HF propagation in the month of **October** for the paths indicated. The horizontal axes show Coordinated Universal Time (UTC), and the vertical axes frequency in MHz. On 10% of the days of this period, the highest frequencies propagated will be at least as high as the upper red curves (HFF, highest possible frequency) and on 50% of the days they will be at least as high as the green curves (MUF, classical maximum usable frequency). The blue curves show the lowest usable frequency (LUF) for a 1500-W CW transmitter. For SSB or a lower transmitter power, the LUF will be somewhat higher than the blue curves indicate. See Oct 1994 QST, pp 27-30, and Feb 1995 QST, pp 34-36, for more details. The predictions assume an observed 2800-MHz solar flux value of 79. This is a Very Low level of solar activity. See the detailed propagation tables on *The ARRL Antenna Book CD-ROM*.

PROPAGATION

The East Coast propagation chart listed here is for October 2016.

If you would like more information on how to read these charts, or for more information on propagation in general,

please visit <http://arrl.org/propagation>

Get your License or Upgrade

If you are interested in getting your first FCC license or upgrading your current amateur radio license, the Beaver Valley Amateur Radio Association holds VE Test sessions (Volunteer Examinations) the second Thursday of each month at the Nine One One center in Ambridge Pennsylvania prior to our BVARA Club meeting. If there is no meeting there is no test session. Please come take your test with us!



For more information, contact :
Rich Soltesz, K3SOM
(724) 847-0610
k3som@arrl.net

VE TEST SESSIONS

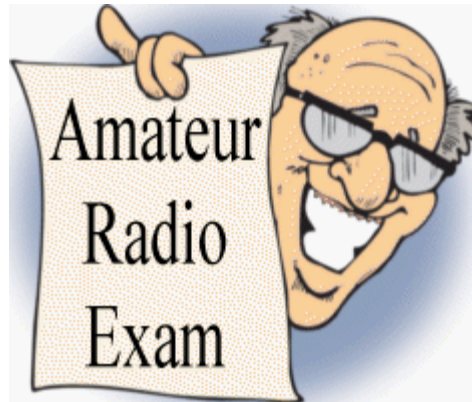
Beaver County Emergency Services Center 351 14th Street Ambridge, PA 15003.
Tests begin promptly at 5 pm on the same day as BVARA Club Meetings
(the second Thursday of the month).
All classes of amateur radio license tests are administered.

ALL candidates MUST bring ALL of the following:

1. 2 forms of I.D. - one MUST be a photo I.D.
2. A pencil AND a pen with blue or black ink.
3. The original AND a photocopy of any valid ham license.
4. The original AND a photocopy of any C.S.C.E.
5. The test fee of \$15 - cash, check, or money order.

New License and Upgrades

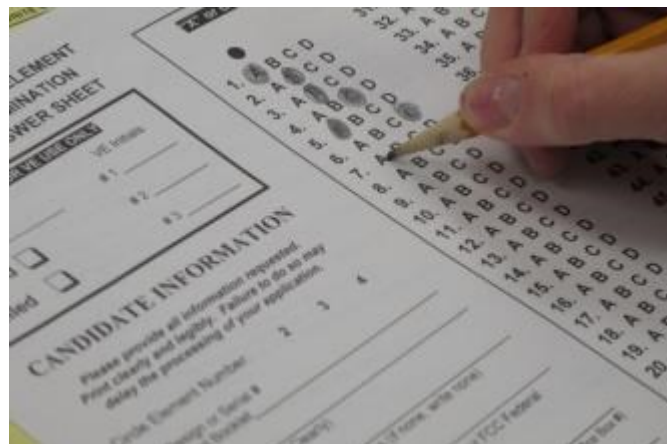
BVARA VE Testing



The word is out - we had two people pass their ham tests this month. They include:

Bryan Haggard - N3MPA, from Washington, PA passed his General test

Bob Barker - KG5PJD, originally from Flatonia, TX has passed both his Technician and General tests and is living in the Monaca, PA area for the next couple of years while he works on a local project



Membership Information

By becoming a BVARA member you help secure the future of Amateur Radio in Beaver County. Additionally, the BVARA receives a portion of each ARRL

membership you purchase!

Join the BVARA and ARRL

Sign up for:	Price	
<input type="checkbox"/> BVARA full membership	20.00	_____
<input type="checkbox"/> BVARA student membership	15.00	_____
<input type="checkbox"/> BVARA associate membership	10.00	_____
<input type="checkbox"/> BVARA Child under 21 at home membership	5.00	_____
<input type="checkbox"/> One year ARRL membership	49.00	_____
A Club Donation		_____
ARRL Member? Yes No	Total Enclosed	_____

Your License Class (If you have one.)

<input type="checkbox"/> Technician	Name _____
<input type="checkbox"/> General	Address _____
<input type="checkbox"/> Advanced	_____
<input type="checkbox"/> Extra Class	Email _____
	Phone _____
	Your Call sign _____
	Your Signature _____

Make check or money order payable to:

The Beaver Valley Amateur Radio Association, P.O. Box 424

South Heights, Pa 15081



WACOM 2016 HAMFEST

Washington Amateur Communications Inc.

SUNDAY, NOVEMBER 6th 2016

WASHINGTON COUNTY FAIRGROUNDS

2151 North Main St.

WASHINGTON, PA 15301

8:00 A.M –3:00 P.M—Admission \$5.00

Doors open early for **VENDOR SETUP** Saturday Nov5th 6:30 p.m.

Talk in on 146.790 City-147.285 East-147.390 North-145.250 West -147.315 South- All PI-131.8

MAJOR VENDORS

Over 250 tables

KJI ELECTRONICS- -QUICKSILVER RADIO-YAESU FACTORY DISPLAY

MAIN PRIZES

- 1ST YAESU FT-DX1200 1.8 - 54 MHz HF + 6m Multi Mode Transceiver**
- 2nd YAESU FT2900R/E High power 75w 145MHz FM mobile**
- 3rd YAESU FT2900R/E High power 75w 145MHz FM mobile**
- 4th YAESU FTM-3100R 144Mhz 65W FM Mobile Transceiver**

BLACK BOX PRIZE'S ONLY 50 TICKETS Sold

MAIN DRAWING AT 1:00 P.M. NEED NOT BE PRESENT TO WIN

CONTACT FOR HAMFEST TABLES **N3TIR** bud@n3tir.com 724-350-6745

Vendor Forms located at www.wacomarc.org under Hamfest tab

We will sell out ALL TABLE SPACE PLEASE CALL EARLY

6Ft TABLES SUPPLIED, cost \$12.00 ea. - Discount reserve more than (4) \$10.00ea.

ADMISSION not INCLUDED ON TABLES rentals

VE TESTING TIME 8:00am

BREAKFAST AND LUNCH WILL BE AVAILABLE

DOOR PRIZES—YL PRIZE—DX CARD CHECKER

THE MEADOWS CASINO & Tanger Outlets less than 2 miles

Send all vendor payments to address below for tables

Please include vendor form and make checks payable to

WACOM c/o Norma Plants N3YJJ

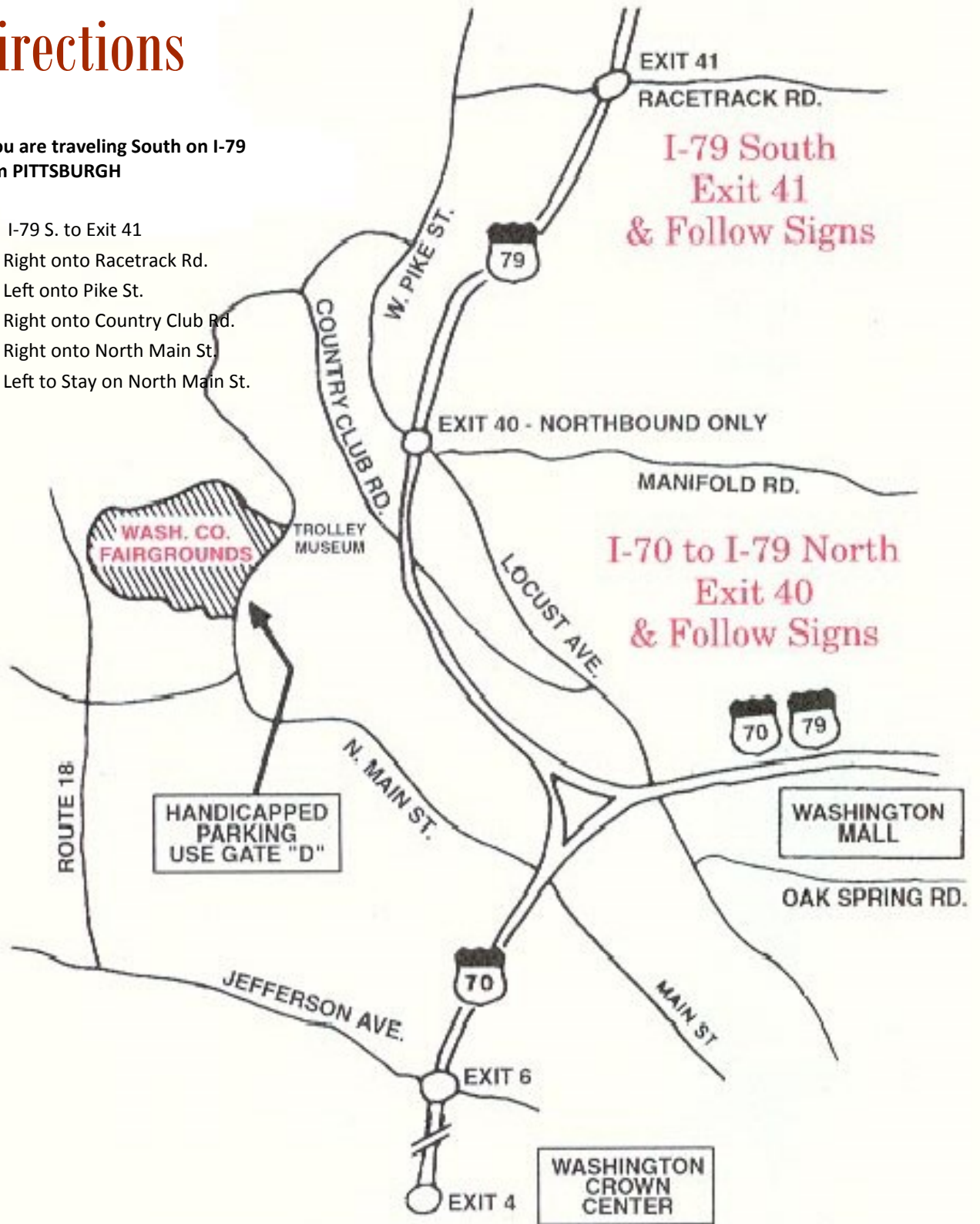
236 Chambers Ridge Road West Alexander, Pa 15376

Hamfests & General Announcements

Directions

If you are traveling South on I-79
from PITTSBURGH

- I-79 S. to Exit 41
- Right onto Racetrack Rd.
- Left onto Pike St.
- Right onto Country Club Rd.
- Right onto North Main St.
- Left to Stay on North Main St.



Contest Corral – October 2016

Check for updates and a downloadable PDF version online at www.arrl.org/contests.

Refer to the contest websites for full rules, scoring information, operating periods or time limits, and log submission information.

Start Date-Time	Finish Date-Time	Bands	Contest name	Mode	Exchange	Sponsor's Website
1 0000	1 2359	1.8-50	TARA PSK Rumble Contest	Dig	Name, call area or country	www.r2ty.org
1 0000	2 2359	21	15 Meter SSTV Dash Contest	SSTV	RSV, mbr or serial	contests.wsstvc.org/rules
1 0800	2 0800	1.8-28	Oceania DX Contest, Phone	Ph	RS, serial	oceaniadxcontest.com/rules.pdf
1 1200	2 1159	1.8-28	Russian WW Digital Contest	Dig	RST(C), oblast or serial	www.rdrclub.ru/drdo-news
1 1200	2 1200	3.5-28	GTC CW Cup	CW	RST, mbr or "NM"	www.rsag.org
1 1200	2 1200	3.5-28	TRC DX Contest	CW Ph	RST, "TRC" or ITU zone	www.trcdx.org/trcdx/index.html
1 1200	2 1200	14-28	WAB HF Phone	Ph	RS, serial, WAB square or country	wab.intomip.net
1 1600	2 1100	3.5-7	International HELL-Contest	Dig	RST, serial	www.darc.de/dar-club/hforete
1 1600	2 2200	1.8-28	California QSO Party	CW Ph	Serial, country or SPC	www.cqp.org/Rules.html
1 1700	1 2100	3.5-28	FISTS Fall Slow Speed Sprint	CW	RST, SPC, name, mbr or power	fistsna.org/operating.html#sprints
2 0600	2 1000	3.5	UBA ON Contest, SSB	Ph	RS, serial, ON section (if any)	www.uba.be/on
2 0700	2 1900	14-28	RSGB International DX Contest	CW Ph	RS(T), serial	www.rsghcc.org/hf
3 0700	3 1000	3.5-7	German Telegraphy Contest	CW	RST, LDK (if any)	www.agov.org/index.php/en
4 0100	4 0300	3.5-28	ARS Spartan Sprint	CW	RST, SPC, power	arsqrp.blogspot.com
5 1900	5 2300	432	432 MHz Fall Sprint	CW Ph	6-char grid square	svhfs.org/2016_Fall_Sprint_Rules.pdf
5 2000	5 2100	3.5	UNEICC 80 Meter Contest	Ph	4-char grid square	www.ukaicc.com
6 1700	6 2000	3.5	SARL 80 Meter QSO Party	Ph	RS, serial, grid	www.sarl.org.za
6 1700	6 2100	28	NRAU 10 Meter Activity Contest	CW Ph Dig	RS(T), 6-char grid square	www.nrau.net/activity-contests
8 0000	9 1559	3.5-28	Malrohan RTTY Contest	Dig	4-char grid square	home.arcor.de/waldemar.kabsch
8 0800	8 1400	902 and up	Microwave Fall Sprint	CW Ph	6-char grid square	svhfs.org/2016_Fall_Sprint_Rules.pdf
8 0800	9 0800	1.8-28	Oceania DX Contest, CW	CW	RST, serial	oceaniadxcontest.com/rules.pdf
8 1200	9 1200	3.5-28	Scandinavian Activity Contest, SSB	Ph	RST, serial	www.sactest.net/blog/rules
8 1200	9 2359	1.8-28	QRP ARCI Fall QSO Party	CW	RST, SPC, mbr or power	www.qrp-arci.org/contests
8 1200	9 2359	1.8-50	SKCC Weekend Sprintathon	CW	RST, SPC, name, mbr or "hono"	www.skccgroup.com
8 1600	9 2200	1.8-144	Pennsylvania QSO Party	CW Ph Dig	Serial, country or ARRL/RAC section	www.nittany-arc.net
8 1600	9 2359	1.8-144	Arizona QSO Party	CW Ph Dig	Serial, country or SPC	www.azqsoparty.org
8 1700	8 2100	3.5-28	FISTS Fall Unlimited Sprint	CW	RST, SPC, name, mbr or power	fistsna.org/operating.html#sprints
8 2000	9 2000	1.8	PODXS070 160 Meter Great Pumpkin Sprint	Dig	RST, SPC	www.podxs070.com
9 0000	9 0400	3.5-14	North American SSB Sprint	Ph	Other's call, your call, serial, name, SPC	ssbsprint.com/rules
9 0600	9 0600	3.5	UBA ON Contest, CW	CW	RST, serial, ON section (if any)	www.uba.be/on
10 0001	10 2359	28	10-10 International 10-10 Day Sprint	CW Ph Dig	Name, mbr or "10," SPC	www.ten-ten.org
12 0030	12 0230	3.5-14	NAQCC CW Sprint	CW	RST, SPC, mbr or power	naqcc.info/sprint201610.html
12 1900	12 2000	3.5	RSGB 80 Meter Club Sprint, CW	CW	Other's call, your call, serial, name	www.rsghcc.org/hf
14 1500	14 1900	1.8-14	MCG Autumn Sprint	CW Ph	RS(T), serial	mcg-club.ru/index-eng.html
15 0000	16 2359	3.5-28	JARTS WW RTTY Contest	Dig	RST, age	jarts.jp/rules2016.html
15 0001	16 2359	28	10-10 International Fall Contest, CW	CW	Name, mbr or "10," SPC	www.ten-ten.org
15 1400	15 2300	All	Iowa QSO Party	CW Ph Dig	RS(T), county or SPC	www.iwaqdx.org/IAQSO
15 1400	16 0200	All	New York QSO Party	CW Ph Dig	RS(T), county or SPC	www.nyqrp.org
15 1500	16 1459	All	Worked All Germany Contest	CW Ph	RS(T), DOK code or "NM" or serial	www.darc.de/roferste
15 1800	16 1800	1.8-144	South Dakota QSO Party	CW Ph Dig	RS(T), county or SPC	www.kb0wsw.com/SDQP
15 2000	15 2359	1.8-50	Fald Hall Sprint	Dig	RST, mbr, SPC, grid	sites.google.com/site/faldhallsclub
16 0000	16 0200	14-21	Asia-Pacific Fall Sprint, CW	CW	RST, serial	jsfc.org/tapsprint/aprule.txt
16 0600	16 1000	144	UBA ON Contest, 2 Meter	CW Ph	RS(T), serial, ON section (if any)	www.uba.be/on
16 1700	17 0100	1.8-144	Illinois QSO Party	CW Ph Dig	RS(T), county or SPC	www.w9aws.org
16 1900	16 2030	3.5	RSGB RoLo CW	CW	RST, previous QRA locator received	www.rsghcc.org/hf
17 0100	17 0300	1.8-28	Run for the Bacon QRP Contest	CW	RST, SPC, mbr or power	qrpcontest.com/pigrun
17 1300	21 2359	All	ARRL School Club Roundup	CW Ph	RS(T), Class (V/C/S), SPC	www.arrl.org/school-club-roundup
17 1900	18 0300	1.8-144	Telephone Pioneers QSO Party	CW Ph Dig	RS(T), name or chapter number	www.tpqsq.com
22 0000	23 2359	50-1296	ARRL EME Contest	CW Ph Dig	Signal report	www.arrl.org/eme-contest-1
22 1200	23 1200	3.5-28	UK/EI DX Contest, SSB	Ph	RS, serial, district code (if any)	www.ukaicc.com
22 1500	23 1500	1.8	Stow Perry Topband Challenge	CW	4-char grid square	www.kln.net/stow
26 0000	26 0200	1.8-28	SKCC Sprint	CW	RST, SPC, name, mbr or power	www.skccgroup.com
26 2000	26 2100	3.5	UNEICC 80 Meter Contest	CW	4-char grid square	www.ukaicc.com
27 1900	27 2000	3.5	RSGB 80 Meter Club Sprint, SSB	Ph	Other's call, your call, serial, name	www.rsghcc.org/hf
29 0000	30 2359	1.8-28	CQ Worldwide DX Contest, SSB	Ph	RS, CQ zone	www.cqww.com/rules.htm

All dates refer to UTC and may be different from calendar dates in North America. Times given as AM or PM are local times and dates.

No contest activity occurs on the 60, 30, 17, and 12 meter bands. Mbr = Membership number. Serial = Sequential number of the contact. S/P/C = State, Province, DXCC Entity, XE = Mexican state. Data for Contest Corral is maintained on the WA7BNM Contest Calendar at www.homucopia.com/contestcal and is extracted for publication in QST 2 months prior to the month of the contest. The ARRL gratefully acknowledges the support of Bruce Horn, WA7BNM, in providing this service. Listings in blue indicate contests sponsored by ARRL or NCJ. The latest time to make a valid contest QSO is the minute listed in the "Finish Time" column.

Bits and Pieces

Every month I encourage you to be safe. Please take this seriously. Think carefully before you perform any task in your radio hobby. I will always encourage the members of my BVARA affiliated club just as I do anyone reading this newsletter to be safe. This can be as simple as being careful with that hot soldering iron to tower safety as you are over a hundred feet from the ground. There isn't a way to turn back time after an accident. Please be safe and enjoy your radio hobby.

Soon winter will be here in the Northern Hemisphere. To me it seems like I am at the starting line for a great season of amateur radio operating. Here in Western Pennsylvania we will have one more Hamfest before the snow flies. I am looking forward to this last Hamfest to visit face to face with ham friends and purchase a few last items I will need to complete my "last part of summer" ham radio pursuits.

Last month I suggested making a goal for your winter radio hobby time. I am thinking hard about learning Morse code. One of my Ham friends suggested a great internet resource for learning code

<http://www.cwops.org/index.html>. This is a group of Elmer hams that are interested in your success with learning code. I have not taken on such a demanding challenge since I studied to pass my amateur radio license tests. This challenge will take some serious dedication. I think this is a natural progression of my amateur radio hobby interest. I sure would like to try this facet of ham radio next. Digital operation, upgrading your license, D Star, homebrew projects, Morse code... I am inviting you to learn/do something new in amateur radio this winter too.

Remember to turn in your PA QSO Party results! October 29th is a world-wide big DX Contest to participate in before the 11-year sunspot cycle heads to it's minimum condition!

Till next month, take safety seriously. Have fun with your radio hobby. 73.



THE CW OPERATORS' CLUB
Celebrating The Unique Art Form Of Morse Code

W E L C O M E

Select Language ▼

CWA 'HF On The Air' Advisors Program
Click [HERE](#)

Welcome to the CW Operators Club Website!

In late 2009 a small group of CW operators – ragchewers, contesters, and DXers – began talking about founding a new club. As these operators were from all three ITU regions, they decided from the outset that this club, unlike many, would be an international club from day one.

The CW Operators Club (CWops) was launched in January 2010. During those three years, the club grew from a handful, to a few hundred, to over 1000 members in over 70 countries. CWops, from the outset, was meant to be inclusive. Whether your preference was using CW for ragchewing, contesting or chasing DX, you would find kindred spirits among the club's members.

Some Interesting Links



Antennas for difficult situations

<https://www.youtube.com/watch?v=iKC9zv8XuPs>

A stainless steel pulley (diy antenna parts)

<http://www.flagandbanner.com/Products/CPULLBOLTD.asp>

DIY loop antenna https://www.youtube.com/watch?v=e3_laf7dlo0

DIY fan dipole antenna <https://www.youtube.com/watch?v=8KHZsKYsZL0>

Wire antennas http://www.qsl.net/va3iul/Antenna/Wire%20Antennas%20for%20Ham%20Radio/Wire_antennas_for_ham_radio.htm

Dipole antennas <http://www.k4vrc.com/dipoles.html>

The past Pennsylvania QSO Party info <http://www.nittany-arc.net/PAQSO.html>

For All Radio Operators



The Amateur's Code

CONSIDERATE ...never knowingly operates in such a way as to lessen the pleasure of others.

LOYAL ...offers loyalty, encouragement and support to other amateurs, local clubs, and the American Radio Relay League, through which Amateur Radio in the United States is represented nationally and internationally.

PROGRESSIVE ...with knowledge abreast of science, a well-built and efficient station and operation above reproach.

FRIENDLY ...slow and patient operating when requested; friendly advice and counsel to the beginner; kindly assistance, cooperation and consideration for the interests of others. These are the hallmarks of the amateur spirit.

BALANCED ...radio is an avocation, never interfering with duties owed to family, job, school or community.

PATRIOTIC ...station and skill always ready for service to country and community.