

THE eQRM

OCTOBER 2019



The BVARA in Beaver County Pennsylvania

Beaver Valley Amateur Radio Association

W3SGJ

Repeater 145.310 PL 131.8

On the Cover : What is down the road for your Fall radio plans? Winter isn't far away, better get those outside things done soon. This great Fall photo was taken by Mitchell Hyman in Pennsylvania.

Inside This Edition

Who We Are	3	Radio Sport	11
This Month	4	Bits and Pieces	12
Propagation	6	It's Your Dime	13
Get a License or Upgrade	7	Of interest to all	14
New License and Upgrades	8		
Membership	9		
Hamfests & General Announcements	10		

Check into our nets

Wednesday 2 Meter

8:30PM on 145.310 MHz PL 131.8

Wednesday 10 Meter

9:00PM on 28.470 MHz

The eQRM is a publication of the Beaver Valley Amateur Radio Association (BVARA) and is Copyright 2010 - 2019. All material presented in this publication is not necessarily the views of the American Radio Relay League (ARRL), BVARA, or members of the said organizations. If you would like to contact the editor of the eQRM, please email David at kc3bxc.73@gmail.com. Please visit us online at www.W3SGJ.org. To subscribe to our newsletter, please visit W3SGJ.org/newsletter.php

Who We Are

2019 BVARA OFFICERS

President: Jack Spencer, KZ3Z

Vice President: Dan Grazulis, KB3VSP

2nd Vice Pres.: Doug Hanna, N4YKQ

Treasurer: Pam Spencer, W3PMS

Secretary: Norm Trunick, K3NJT

Director: Tony Pavilonis, W6PEF

Director: Bob Winkle, N3AZZ

Trustee: Rich Soltesz, K3SOM

MONTHLY MEETINGS

E-Board meetings are now held the Saturday before the monthly club meeting.

VE testing begins at 5:00 PM.

Regular meetings are at 6:30 PM

All meetings are held at the
Beaver County
Emergency Services Center
351 14th Street
Ambridge, PA 15003
on the second Thursday of every month
(unless otherwise stated).

Club Meetings 2019

Oct 10

Nov 14

Dec 07 Christmas Party
(no club meeting)

Jan 09 2020

Feb 13

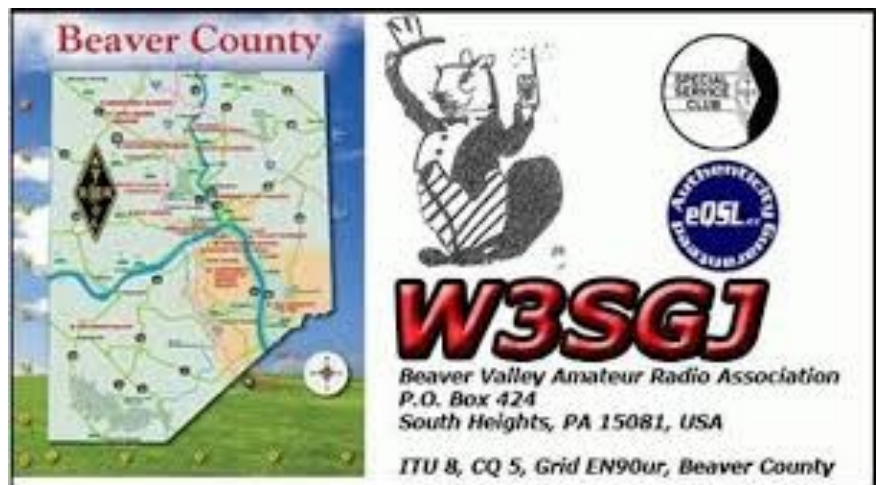
Mar 12

Apr 08

May 14

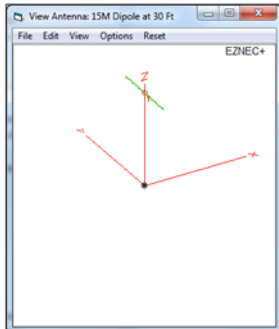
Jun 11

Jul 09



This Month

This Month:



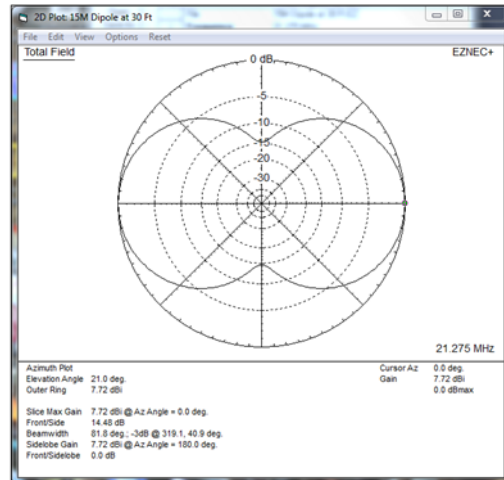
Speaker:

Rich Soltesz
K3SOM

Topic:

Easy EZNEC for You

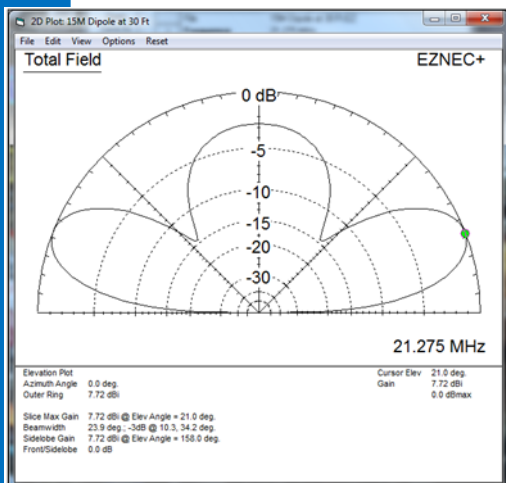
Including:



Continuing with our BVARA Presentation Series this year, our topic this month takes a look at a very useful tool for understanding antennas. Members have asked for an introduction to understanding EZNEC 6+ and how to model, analyze, and understand what it tells us about an antenna.

We'll start very slowly with a simple dipole antenna from beginning to end. Along the way, we'll see how different screens tie together and tell us a great deal of information about our antenna that we have modeled. Once our basic dipole model is set up, we will look at raising or lowering its height above ground and how its performance changes. Then we'll look at different sizes of antenna wire and even aluminum tubing. If you are unfamiliar with antenna modeling, we'll see how easy it is to use EZNEC 6+ and then examine its performance in a typical Western Pennsylvania back yard.

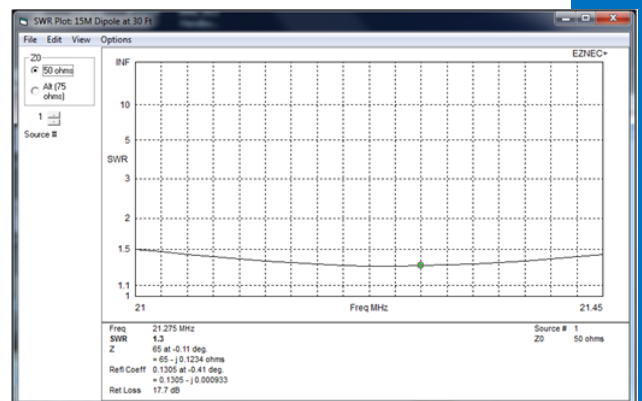
But wait, there's more: we'll find out how to easily change the wire length to get our dipole to resonate where we want it to resonate. What about an inverted 'V' configuration? Should we be concerned about our dipole sagging in the middle? How much does the impedance change with height and other factors? You will be fascinated at how easy it is to use EZNEC in learning about this simple antenna. Do you need a wintertime project to give you a jump to the Spring season of antenna building? You've asked for an easy tutorial and how to interpret the results. This one's for YOU, so don't miss this opportunity!



Rich's

Background:

Extra Class Ham,
Licensed since
1962, VE,
B.S. Electrical En-
gineering



More this Month

Weekly

The Freedom Square Diner in Monaca has a great wait staff. Come let them take your order and serve you something delicious.

Thursday Morning Breakfast
(or you can have lunch)



The BVARA meets every Thursday at the Freedom Square Diner in Center Township, just to the right of the Cinemark Center Township Marketplace at 09:30 AM. All radio amateurs and those interested in amateur radio are encouraged to come join us at our Thursday morning breakfast.

See you Thursday at



The eQRM urges all Beaver County licensed amateurs to participate in the County's RACES and ARES programs.

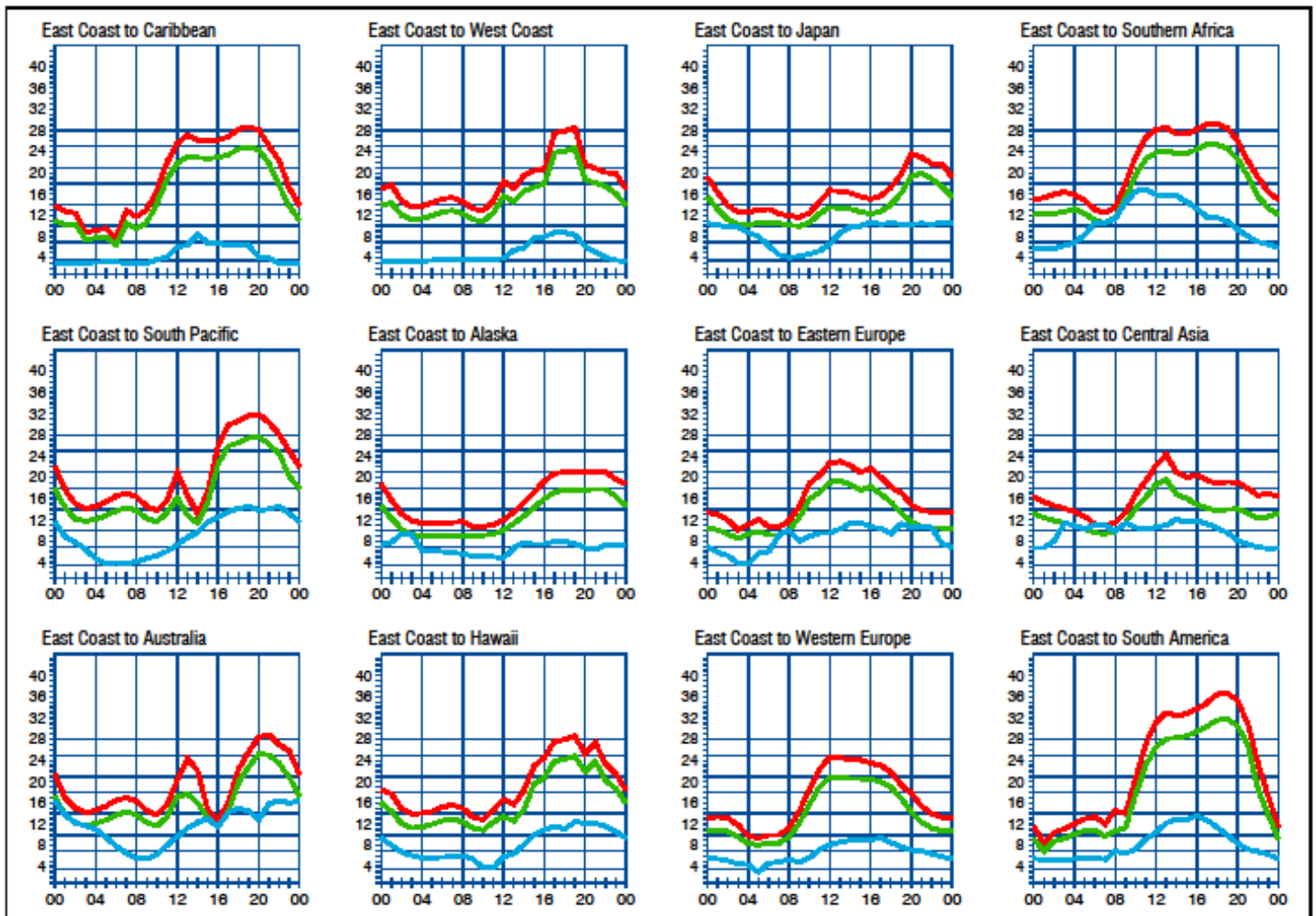
Any Beaver County Amateur that is interested in participating in the RACES/ARES programs can do so by checking into the Beaver County Public Service Net which meets every Monday evening at 8:30 PM local time on the N3TN 146.850 MHz repeater (131.8 PL)

RACES / ARES

The eQRM urges all county hams to participate.



Propagation



When are the bands open? These charts, generated using CAPman, show probabilities for average HF propagation in the month of October for the paths indicated. The horizontal axes show Coordinated Universal Time (UTC), and the vertical axis frequency in MHz. On 10% of the days of this period, the highest frequencies propagated will be at least as high as the upper red curves (HFF, highest possible frequency) and on 30% of the days they will be at least as high as the green curves (MUF, classical maximum usable frequency). The blue curves show the lowest usable frequency (LUF) for a 1500-W CW transmitter. For SSB or a lower transmitter power, the LUF will be somewhat higher than the blue curves indicate. See Oct 1994 QST, pp 27-30, and Feb 1995 QST, pp 34-36, for more details. The predictions assume an observed 2800-MHz solar flux value of 70. This is a Very Low level of solar activity. See the detailed propagation tables on *The ARRL Antenna Book CD-ROM*.

PROPAGATION

The East Coast propagation chart listed here is for October 2019.

If you would like more information in general, please visit <http://www.arrl.org/propagation>

ARRL
The national association for
AMATEUR RADIO

Get your License or Upgrade

If you are interested in getting your first FCC license or upgrading your current amateur radio license, the Beaver Valley Amateur Radio Association holds VE Test sessions (Volunteer Examinations) the second Thursday of each month at the Nine One One center in Ambridge Pennsylvania prior to our BVARA Club meeting. If there is no meeting there is no test session. Please come take your test with us!

For more information, contact :
Rich Soltesz, K3SOM
(724) 847-0610
k3som@arrl.net



VE TEST SESSIONS

Beaver County Emergency Services Center 351 14th Street Ambridge, PA 15003.
Tests begin promptly at 5 pm on the same day as BVARA Club Meetings
(the second Thursday of the month).
All classes of amateur radio license tests are administered.

ALL candidates MUST bring ALL of the following:

1. 2 forms of I.D. - one MUST be a photo I.D.
2. A pencil AND a pen with blue or black ink.
3. The original AND a photocopy of any valid ham license.
4. The original AND a photocopy of any C.S.C.E.
5. The test fee of \$15 - cash, check, or money order.

New License and Upgrades

BVARA VE Testing

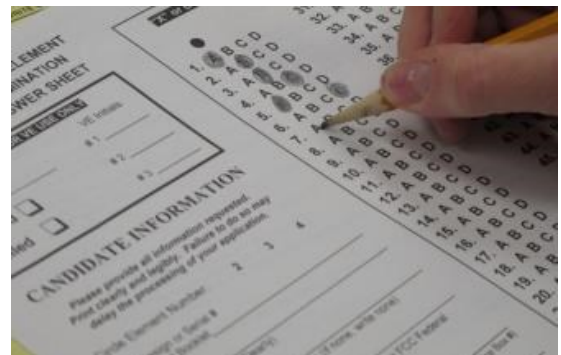


Here are the successful participants in our VE process this month :

We had one candidate who tested for an upgrade to Extra Class. Here are the details:

Dean Kellerhouse – K2DKK, Oneonta, NY Extra

Special thanks to Bob, N3AZZ, Tony, K3AHP, and Reg, W3REG for their Volunteer Examiner help.



Membership Information

By becoming a BVARA member you help secure the future of Amateur Radio in Beaver County. Additionally, the BVARA receives a portion of each ARRL

membership you purchase!

Join the BVARA and ARRL

Sign up for:	Price	
<input type="checkbox"/> BVARA full membership	25.00	_____
<input type="checkbox"/> BVARA student membership	15.00	_____
<input type="checkbox"/> BVARA associate membership	10.00	_____
<input type="checkbox"/> BVARA Child under 21 at home membership	5.00	_____
<input type="checkbox"/> One year ARRL membership	49.00	_____
A Club Donation		_____
ARRL Member? Yes No	Total Enclosed	_____

Your License Class (If you have one.)

<input type="checkbox"/> Technician	Name _____
<input type="checkbox"/> General	Address _____
<input type="checkbox"/> Advanced	_____
<input type="checkbox"/> Extra Class	Email _____
	Phone _____
	Your Call sign _____
	Your Signature _____

Make check or money order payable to:

The Beaver Valley Amateur Radio Association, P.O. Box 424

South Heights, Pa 15081

Hamfests & General

**EARLY
POST**



WACOM 2019 HAMFEST **Washington Amateur Communications Inc.** **SUNDAY, NOVEMBER 3rd 2019**

WASHINGTON COUNTY FAIRGROUNDS
2151 North Main St.
WASHINGTON, PA 15301

8:00 A.M – 3:00 P.M—Admission \$5.00

Doors open early for VENDOR SETUP Saturday November 2nd st 6:00 p.m.
Talk in on 146.790 City-147.285 East-147.390 North-145.250 West -147.315 South- All PI-131.8

MAJOR VENDORS Over 250 tables

MAIN PRIZES:

1st Icom IC-7300

2nd Icom IC-2730A

3rd Yaesu FTM-3200DR

4th Kenwood TM-281A

BLACK BOX PRIZE'S ONLY 50 TICKETS Sold

MAIN DRAWING AT 1:00 P.M. NEED NOT BE PRESENT TO WIN

CONTACT FOR HAMFEST TABLES KC3TOM@arrl.net 412-414-5627

Vendor Forms located at www.wacomarc.org under Hamfest tab
WE WILL Sell out ALL TABLE SPACE PLEASE CALL EARLY

6Ft TABLES SUPPLIED, cost \$12.00 ea. - Discount reserve more than (4) \$10.00ea.

ADMISSION not INCLUDED ON TABLES rentals

VE TESTING TIME 9:00am

BREAKFAST AND LUNCH WILL BE AVAILABLE

DOOR PRIZES—YL PRIZE—DX CARD CHECKER

THE MEADOWS CASINO & Tanger Outlets less than 2 miles

Send all vendor payments to address below for tables

Please include vendor form and make checks payable to: WACOM c/o Tom Wright KC3TOM
117 Perry Road, Burgettstown, PA 15021

Bruce Draper, AA5B, aa5b.corral@gmail.com

Contest Corral

October 2019

Check for updates and a downloadable PDF version online at www.arrl.org/contests.

Refer to the contest websites for full rules, scoring information, operating periods or time limits, and log submission information.

Start Date-Time	Finish Date-Time	Bands	Contest Name	Mode	Exchange	Sponsor's Website
1 0100	1 0300	3.5-28	ARS Spartan Sprint	CW	RST, SPC, power	arsqp.blogspot.com
1 0800	7 2000	All	IQRP Quarterly Marathon	CW Ph Dig	RS(T)	www.ontoballuna.it/contest.htm
1 1900	1 2300	222	220 MHz Fall Sprint	CW Ph Dig	4-char grid square	svhfs.org
2 2000	2 2100	3.5	UKEICC 80-Meter Contest	Ph	4-char grid square	www.ukisoc.com
3 0700	3 1000	3.5-7	German Telegraphy Contest	CW	RST, LDK (if DL)	agow.org/index.php/en
3 1700	3 2000	3.5	SARL 80-Meter QSO Party	Ph	RS, serial, grid locator or QTH	www.sarl.org.za
3 1700	3 2100	28	NRAU 10-Meter Activity Contest	CW Ph Dig	RS(T), 6-char grid square	www.nrau.net/activity-contests
3 1900	3 2100	1.8-50	SKCC Sprint Europe	CW	RST, SPC, name, mbr or power	www.skccgroup.com
5 0600	6 1800	3.5-28	TRC DX Contest	CW Ph	RST, serial, "TRC" if member	www.trcdx.org/trcdx
5 0800	6 0800	1.8-28	Oceania DX Contest, Phone	Ph	RS, serial	www.oceaniadxcontest.com
5 1200	6 1159	1.8-28	Russian WW Digital Contest	Dig	RST(Q), 2-char oblast code or serial	rdclub.ru/rdr-news/russian-ww-digital-contest/51-rus-ww-digi-rules
5 1400	7 0200	Any	YLRL DXNAYL Contest	CW Ph Dig	Serial, RS(T), SPC	www.darc.de/dar-club/infomats/contests/hell-contest/ausschreibung
5 1600	6 1100	3.5-7	International HELL-Contest	Dig	RST, serial	www.ccp.org
5 1600	6 2200	1.8-28	California QSO Party	CW Ph	Serial, county or SPC	fistana.org
5 1700	5 2100	3.5-28	FISTS Fall Slow Speed Sprint	CW	RST, SPC, name, mbr or power	www.skccgroup.com
5 1800	6 1800	All	SKCC QSO Party	CW	RST, SPC, name, 4-char grid square	www.skccgroup.com
6 0500	6 2300	3.5-28	RSGB DX Contest	CW Ph	RS(T), serial	www.rsgb.org/hf
6 0600	6 0900	3.5	UBA ON Contest, SSB	Ph	RS, serial, ON section (if ON)	uba.be/en/hf/contest-rules
6 2200	6 2359	7-21	Peanut Power QRP Sprint	CW Ph	RS(T), SPC, peanut number or power	www.nogazqp.org/PeanutPower
9 0030	9 0230	3.5-14	NAQCC CW Sprint	CW	RST, SPC, mbr or power	naqcc.info
9 1900	9 2300	432	432 MHz Fall Sprint	CW Ph Dig	4-char grid square	svhfs.org
10 0001	10 2359	28	10-10 International 10-10 Day Sprint	CW Ph Dig	Name, mbr or "0", SPC	www.ten-ten.org
12 0000	12 2359	1.8-28	QRP ARCI Fall QSO Party	CW	RST, SPC, mbr or power	qrpaci.org/contests
12 0000	13 1559	3.5-28	Makrothon RTTY Contest	Dig	4-char grid square	www.pt259.org/makrothon
12 0300	13 2100	1.8-UHF	Nevada QSO Party	CW Ph	RS(T), "NV" and county, or SPC	nvqso.com
12 0800	12 1400	902 and up	Microwave Fall Sprint	CW Ph Dig	6-char grid square	svhfs.org
12 0800	13 0800	1.8-28	Oceania DX Contest, CW	CW	RST, serial	www.oceaniadxcontest.com
12 1200	13 1200	3.5-28	Scandinavian Activity Contest, SSB	Ph	RST, serial	sactest.net/blog/rules
12 1200	13 2359	1.8-50	SKCC Weekend Sprintathon	CW	RST, SPC, name, mbr or "none"	www.skccgroup.com
12 1600	13 2200	1.8-UHF	Pennsylvania QSO Party	CW Ph Dig	Serial, county or ARRL/RAC section	paqso.org
12 1600	13 2359	1.8-144	Arizona QSO Party	CW Ph Dig	RS(T), county or SPC	www.sqzqsoparty.org
12 1700	12 2100	3.5-28	FISTS Fall Unlimited Sprint	CW	RST, SPC, name, mbr or power	www.fistana.org
12 1800	13 1800	1.8-144	South Dakota QSO Party	CW Ph Dig	RS(T), county or SPC	www.sdqsoparty.com
12 2000	13 2000	1.8	PODXS 070 Club 160-Meter Great Pumpkin Sprint	Dig	RST, SPC	www.podxs070.com
13 0530	13 0800	3.5	UBA ON Contest, CW	CW	RST, serial, ON section (if ON)	uba.be/en/hf/contest-rules
13 0800	13 1000	50	UBA ON Contest, 6 Meters	CW Ph	RST, serial, ON section (if ON)	uba.be/en/hf/contest-rules
14 0000	14 0200	1.8-28	4 States QRP Group Second Sunday Sprint	CW Ph	RS(T), SPC, mbr or power	www.4sqgp.com
14 1900	14 2030	3.5	RSGB 80-Meter Autumn Series, CW	CW	Other station's call, your call, serial, name	www.rsgb.org/hf
17 1900	17 2030	3.5	AGCW Semi-Automatic Key Evening	CW	RST, serial, 2-digit year first used a bug	agow.org/index.php/en
18 1600	18 2359	3.5-14	Zombie Shuffle	CW	RS(T), SPC, zombie number or area code, name	www.zianet.com/qp
19 0000	20 1600	50-144	Aruacania World Wide VHF Contest	CW Ph	RS(T), 6-char grid square	svhfs.com/rules/en.pdf
19 0000	20 2359	60-1296	ARRL EME Contest	CW Ph Dig	Signal report	www.arrl.org/eme-contest
19 0000	20 2359	3.5-28	JARITS WW RTTY Contest	Dig	RST, age of operator	jarts.jp/rules2019.html
19 0001	20 2359	28	10-10 International Fall Contest, CW	CW	Name, mbr or "0", SPC	www.ten-ten.org
19 1400	20 0200	All	New York QSO Party	CW Ph Dig	RS(T), county or SPC	www.nyqso.org
19 1500	20 1459	3.5-28	Worked All Germany Contest	CW Ph	RS(T), DOK (local area code) or serial	www.darc.de/dar-club/infomats/contests/worked-all-germany-contest/en/rules
19 1500	20 1500	1.8	Stow Perry Topband Challenge	CW	4-char grid square	www.kdn.net/stow
19 2000	19 2359	1.8-7, 21-50	Fold Fall Sprint	Dig	RST, mbr, SPC, grid	sites.google.com/site/foldfallclub
19 2130	19 2230	7	Argentina National 7 MHz Contest	Ph	RS, 2-digit year first licensed	u7az.org/wp/curso-nacional-40m
20 0000	20 0200	14-21	Asia-Pacific Fall Sprint, CW	CW	RST, serial	jafc.org/apfsprint/sprules.txt
20 0700	20 1000	144	UBA ON Contest, 2 Meters	CW Ph	RST, serial, ON section (if ON)	uba.be/en/hf/contest-rules
20 1700	21 0100	1.8-144	Illinois QSO Party	Ph	RS(T), county or SPC	www.w9tws.org/ILQP.html
20 1900	20 2030	3.5	RSGB RoLo CW	CW	RST, previous 6-char grid square received	www.rsgb.org/hf
21 0100	21 0300	1.8-28	Run for the Bacon QRP Contest	CW	RST, SPC, mbr or power	qrpcontest.com/pg/run
21 1300	25 2359	All	ARRL School Club Roundup	CW Ph Dig	RS(T), class (VCS), SPC	www.arrl.org/school-club-roundup
21 1800	22 0300	1.8-UHF	Telephone Pioneers QSO Party	CW Ph Dig	RS(T), chapter number (if any), name	www.tpqso.com
23 0000	23 0200	1.8-28	SKCC Sprint	CW	RST, SPC, name, mbr or power	www.skccgroup.com
23 1900	23 2030	3.5	RSGB 80-Meter Autumn Series, Data	Dig	Other station's call, your call, serial, name	www.rsgb.org/hf
26 0000	27 2359	1.8-28	CQ Worldwide DX Contest, SSB	Ph	RS, CQ zone	www.cqww.com
30 2000	30 2100	3.5	UKEICC 80-Meter Contest	CW	4-char grid square	www.ukisoc.com
31 1900	31 2030	3.5	RSGB 80-Meter Autumn Series, SSB	Ph	Other station's call, your call, serial, name	www.rsgb.org/hf

All dates refer to UTC and may be different from calendar dates in North America. Contests are not conducted on the 60-, 30-, 17-, or 12-meter bands. Mbr = Membership number. Serial = Sequential number of the contact. SPC = State, Province, DXCC Entity. XE = Mexican state. Listings in blue indicate contests sponsored by ARRL or NCJ. The latest time to make a valid contact QSO is the minute listed in the "Finish Time" column. *DiaF* for Contest Corral is maintained on the WA7BNM Contest Calendar at www.contestcalendar.com and is extracted for publication in QST 2 months prior to the month of the contest. ARRL gratefully acknowledges the support of Bruce Horn, WA7BNM, in providing this service.

Bits and Pieces

Hello everyone,

It is October I sure have enjoyed my summer and the nice heat, last winter I couldn't wait for the warmth of summer. Summer is winding down pretty fast. Fall type weather is very near. Fall is my favorite time of year as you may be able to tell by my choice of photos for the first page. I always look forward to the cooler weather. I love the crisp morning air and the leaves coloring-up. It only lasts a short time. I spend as much time as I can outside enjoying it. I hope you can too.



I had a great time visiting fellow hams and looking around at the September hamfest in Unionville put on by the Butler County Amateur Radio Association. This is a very nice hamfest. The rest rooms are clean. The paved grounds are good for sellers and the parking is good for people like me to come have a wonderful time looking at and purchasing some ham related items. I purchased a few things I needed to finish my new HF antenna.

I have been working on my new HF antenna project... I drill the hole to put the phone pole in the ground, nature sends rain to fill it up and collapse the dirt back in the hole...I bail the rain water out of the hole, I get the dirt back out of the hole, I set up a time to have help to put the pole in the ground... it rains. I have completed this process at least three times. I have the hole dry and dirt free. This afternoon looks to have me do it again, rain is in the forecast for today. I will get this pole planted in the ground yet! Getting this antenna up will be a fun story someday. It is just annoying for now! Stop laughing. Okay, it is funny now too.

Till next month 73 KC3BXC clear but I'll be listening...

Be courteous on the air, be safe and have fun with your hobby.

It's Your Dime

Remember back when you could communicate by "Pay Phone" for ten cents? This page is for anyone who wants to communicate with the BVARA community and beyond. Please send me your article that you would like posted on this page. Please, only topics and language in good taste. As the editor I reserve the option to post it or ignore it. Send your dime to me at: kc3bxc.73@gmail.com



Club Historical Activities – We Need Your Help

Recently I've been contacted by the nephew of one of our members from the 1950s who has been looking through old pictures and QSL cards that were taken/collected by his uncle as his uncle began a very enthusiastic journey into learning and experiencing ham radio. I discovered that the uncle was well liked by club members at that time. These QSL cards and photographs have been offered to our club so that we can recapture another piece of our club history. Other events were the tornado, the great flood, ham radio demos at the mall, the first repeater, after WW II with war surplus equipment, and so much more.

I've also been given other photos and QSL cards from others who either knew, were close friends with, or were very close relatives (YLs and XYLs) with these Silent Keys (SK). Many pictures were used back in 2013 when our club history by decades was written for the eQRM Newsletter. But more pictures were available and additional photos were 'donated' for club use. Typically, I scan these photos in with a high-quality Minolta scanner that I purchased many, many years ago to capture my old collection of fading and color-shifting slides and photos over the past 50 years or more. I still have that scanner and I've been able to easily upgrade the driver for Windows 7. It's been very helpful in bringing these old faded images back to life.

While James Earl Jones in a TV commercial says: "We have the meat!" I can say: "I have the scanning, digitizing, and image adjustment tools we need to make these memories 'pop' onto your display screen. Whether they are old black and white or color photos, slides, or negatives, they can readily be digitized.

I need your help.

If you have old photos of club events or gatherings, please consider finding them, adding any details about these pictures including possibly the date, event, and/or names/call signs of people in the pictures on a separate piece of paper and loan it to the club. In return, I will non-destructively copy them and the additional details that you provide to me in the order that I receive them. All provided material will then be returned to you.

What will we do with them?

We plan on creating a series of articles for the eQRM Newsletter highlighting specific past events or gatherings of our club members. It's amazing how young we looked back then, so stay tuned!

Rich - K3SOM

Of Interest to All



Events this month on the air include:

1. The 63rd PA QSO Party is on October 12th and 13th. Details are at www.paqso.org with all the information. Submit your entry with our name as your affiliated club, as appropriate.
2. The 62nd Annual Jamboree On The Air will be held on the weekend of Oct 18-20th. Jamboree-on-the-Air, or JOTA, is the largest Scouting event in the world. JOTA uses amateur radio to link Scouts and hams around the world, around the nation, and in your own community. This jamboree requires no travel, other than to a nearby amateur radio operator's ham shack. To find registered JOTA stations in your area visit <https://k2bsa.net/registered-jamboree-on-the-air-stations>.
3. The CQ Worldwide DX Contest, SSB takes place on October 26th and 27th and begins at 8 PM EDT (00:00 UTC on Oct 26th) on October 25th for 48 continuous hours . Full details are at WWW.CQWW.com with all the information. You should hear many stations on all bands from around the world. Try listening and operating a few days earlier when many international stations test their equipment and QRM is much reduced.

