

# THE eQRM

OCTOBER 2021



## The BVARA in Beaver County Pennsylvania

Beaver Valley Amateur Radio Association

W3SGJ

2M Repeater

145.310

PL 131.8



**On the Cover:** Fall in Western Pennsylvania is so beautiful! I encourage you to get out and enjoy the Fall colors. Soon the weather will be unforgiving, do you have any last minute outdoor ham projects? Now is a great time to finish them.

## Inside this edition

Who We Are	3	Hamfests & General	9
		Announcements	
This Month	4	Bits and Pieces	10
Get a License or Upgrade	6	It's Your Dime	11
New License and Upgrades	7	Of interest to All	13
Membership	8	Radio Sport	16



### Check into our nets

**Wednesday 2 Meter**

**8:30PM on 145.310 MHz PL 131.8**

**Wednesday 10 Meter**

**9:00PM on 28.470 MHz**

The eQRM is a publication of the Beaver Valley Amateur Radio Association (BVARA) and is Copyright 2010 - 2021. All material presented in this publication is not necessarily the views of the American Radio Relay League (ARRL), BVARA, or members of the said organizations. If you would like to contact the editor of the eQRM, please email David at [kc3bxc.73@gmail.com](mailto:kc3bxc.73@gmail.com). Please visit us online at [www.W3SGJ.org](http://www.W3SGJ.org). To subscribe to our newsletter, please visit [W3SGJ.org/newsletter.php](http://W3SGJ.org/newsletter.php)



# Who We Are

## 2021 BVARA OFFICERS

President: Jack Spencer, KZ3Z

Vice President: Dan Grazulis, KB3VSP

2nd Vice Pres.: Open

Treasurer: Pam Spencer, W3PMS

Secretary: Norm Trunick, K3NJT

Director: Tony Pavilonis, K3AHP

Director: Jim Allen, KC3IXE

Trustee: Doug Hanna, N4YKQ

## MONTHLY MEETINGS

E-Board meetings are now held the Saturday before the monthly club meeting.

VE testing begins at 5:00 PM.

Regular meetings are at 6:30 PM

All meetings are held at the  
Beaver County  
Emergency Services Center  
351 14th Street  
Ambridge, PA 15003  
on the second Thursday of every month  
(unless otherwise stated).

*All meetings subject to Covid  
restrictions and cancellations.*

## Club Meetings 2021

Oct 14

Nov 11

Dec 08 Christmas Party

Jan 13 2022

Feb 10

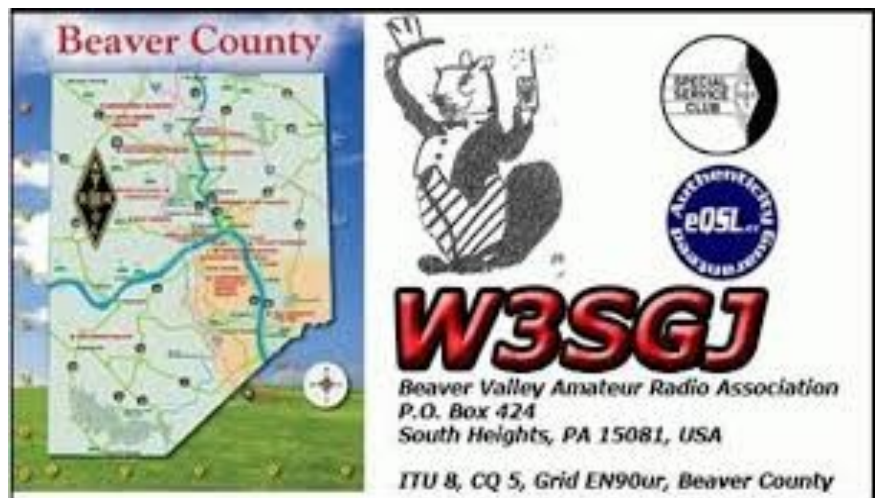
Mar 10

Apr 14

May 12

Jun 09

Jul 14



# This Month

## October Special Session

*Speakers:* BVARA Club Members and You

*Topic:* New QRP Equipment Discussion  
And  
Roundtable Help with Questions from You

### What's It All About?

Are you new to ham radio and equipment? Are you wondering about new digital modes with your equipment? Maybe you have questions about antennas, setting up your station, how to make an HF contact, power sources, or how to interface your computer to your ham equipment. Perhaps your questions are even more basic like rules and regulations, which bands are best to use, where to find operating resources like band plans, what to do after you make contacts and how do you save or conveniently create a useful log. Maybe you have problems with annoying noise or need help in selecting some equipment. The list goes on . . .

Since our initial roundtable discussion in November 2019, new hams have continually sought the answers to questions you have about ham radio and operating a station. You don't have to be a member of the BVARA; you may just have a question or two that's been bothering you about our ham radio hobby. In fact, you could be new to the hobby or a seasoned veteran with questions. Maybe the concept of POTA Activation or becoming a POTA Hunter piques your curiosity. Whether it's technical or about rules/regulations or operating or equipment, we want to help you. We'll start our roundtable around 7:15 PM at the Beaver County Emergency Services Center at 351 14th Street, Ambridge, PA 15003. ***Please join us with your questions!***

Rich Soltesz - K3SOM  
Extra Class Ham, Licensed since 1962, VE,  
B.S. Electrical Engineering



# More this Month

## Weekly

The Freedom Square Diner in Monaca has a great wait staff. Come let them take your order.

Thursday Morning Breakfast  
(or you can have lunch)

**Come join us!**



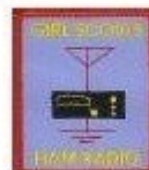
The BVARA meets every Thursday at the Freedom Square Diner in Center Township, just to the right of the Cinemark Center Township Marketplace at 09:30 AM. All radio amateurs and those interested in amateur radio are encouraged to come join us at our Thursday morning breakfast.

**See you  
Thursday at**



### RACES / ARES

The eQRM Urges All County Hams to Participate.



# Get your License or Upgrade

If you are interested in getting your first FCC license or upgrading your current amateur radio license, the Beaver Valley Amateur Radio Association holds VE Test sessions (Volunteer Examinations) the second Thursday of each month at the Beaver County Emergency Services Center in Ambridge Pennsylvania prior to our BVARA Club meeting. If there is no meeting there is no test session. Please come take your test with us!

For more information, contact :  
Rich Soltesz, K3SOM  
(724) 847-0610  
k3som@arrl.net



## VE TEST SESSIONS

Beaver County Emergency Services Center 351 14th Street Ambridge, PA 15003.  
Tests begin promptly at 5 pm on the same day as BVARA Club Meetings  
(the second Thursday of the month).  
All classes of amateur radio license tests are administered.



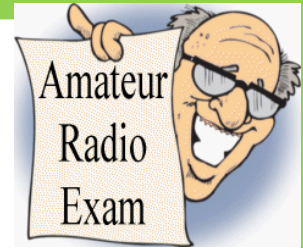
ALL candidates MUST bring ALL of the following:

1. 2 forms of I.D. - one MUST be a photo I.D.
2. A pencil AND a pen with blue or black ink.
3. The original AND a photocopy of any valid ham license.
4. The original AND a photocopy of any C.S.C.E.
5. The test fee of \$15 - cash only.
6. Your FRN Number. (free from the FCC, call for details)

# New License and Upgrades

BVARA VE Testing

## Testing this month :



### September 2021 VE Test Session Results

Our September VE Test Session had two candidates, with each participant achieving their goal of passing the exam. Our new electronic filing system once again worked superbly with completion of new and/or upgraded licenses available in just two days. A congratulations email was then sent to each candidate with a snippet of their license page for their new callsign and/or verification that all information was entered correctly.

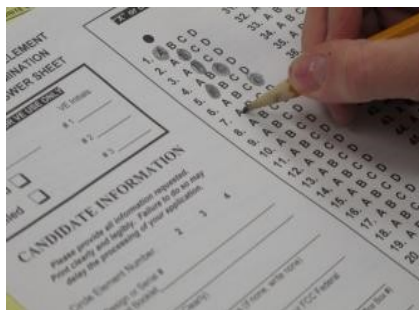
Our testing was conducted at our normal location at the Beaver County Emergency Services Center in Ambridge, PA. We are anticipating the continued use of the facility for our VE testing.

Congratulations to:

Karen Pelkofer - KC3SRL, Baden, PA, Technician  
Bob Brandenstein – KC3SGS, Freedom, PA, General

All of our BVARA testing would not be possible without the help of the following Extra-Class VE Team members:

Reg Genola – W3REG,  
Tony Pavilonis – K3AHP,  
Mick Pyzoha – N3OJP,  
Bart Stack – KB3NFM, and  
Bob Winkle – N3AZZ



73 from Rich Soltesz - K3SOM, VE Liaison



# Membership Information

By becoming a BVARA member you help secure the future of Amateur Radio in Beaver County. Additionally, the BVARA receives a portion of each ARRL membership you purchase!

## Join the BVARA and ARRL

Sign up for:	Price	
<input type="radio"/> BVARA full membership	25.00	_____
<input type="radio"/> BVARA student membership	15.00	_____
<input type="radio"/> BVARA associate membership	10.00	_____
<input type="radio"/> BVARA Child under 21 at home membership	5.00	_____
One year ARRL membership	49.00	_____
A Club Donation		_____
ARRL Member?      Yes      No	Total      Enclosed	_____

Your License Class (If you have one.)

<input type="radio"/> Technician	Name _____
<input type="radio"/> General	Address _____
<input type="radio"/> Advanced	_____
<input type="radio"/> Extra Class	Email _____
	Phone _____
	Your Call sign _____
	Your Signature _____

Make check or money order payable to:

The Beaver Valley Amateur Radio Association, P.O. Box 424  
South Heights, Pa 15081



# Hamfests & General Announcements



Nope....wait a minute,

Ah.

According to this there will be  
a hamfest next month!

# Bits and Pieces

Hello everyone,

Last month I missed one of my favorite hamfests. It is one of my favorites because it isn't far to drive. I also like the location. The area is very nice for setting up to sell and it is flat to walk around to buy too. I sure wish I would have remembered it! I was so disappointed when it dawned on me that I missed it. Did you go to the Unionville Hamfest? If you did, I envy you. I just got so busy with things here at home I missed it. I wrote a big note for the next hamfest! I stuck that big note on my calendar for the November hamfest in Washington Pennsylvania. This should keep me from missing this hamfest! I will also ask my YL to remind me.



Judging from the first page of this month's eQRM maybe you can tell that Fall is my favorite time of year. I look forward to the warm days and cool nights. The crispness in the evening air gets me motivated to get my last few chores completed before Winter comes. I have some last-minute painting and building to complete this year. I see my neighbor putting up his Winter firewood pile. If I have time, I want to put up a couple of antennas. I have one HF antenna and one two-meter antenna I would like to put up.

This year the Fall leaves are already beginning to change here at my home. I plan to take a trip up into the mountains so I can get an even better view of the leaves changing color. I want to walk thru the colorful noisy leaf litter too.

As the evening temperatures cool even further as Fall progresses, I have a pretty good excuse to stay warm next to my HF rig in my radio room. I don't think my YL minds. She is good to me this way.

As the days have begin to get shorter, I encourage you to get those last-minute outdoor ham plans completed. Let me know what you have been up to. I would enjoy your input.

Clear, but I will be monitoring.



73 KC3BXC



# It's Your Dime

## It's Your Dime.

Remember back when you could communicate by “Pay Phone” for ten cents? This page is for anyone who wants to communicate with the BVARA community and beyond. Please send me your article that you would like posted on this page. Please, only topics and language in good taste. As the editor I reserve the option to post it or ignore it. Send your dime to me at: [kc3bxc.73@gmail.com](mailto:kc3bxc.73@gmail.com)



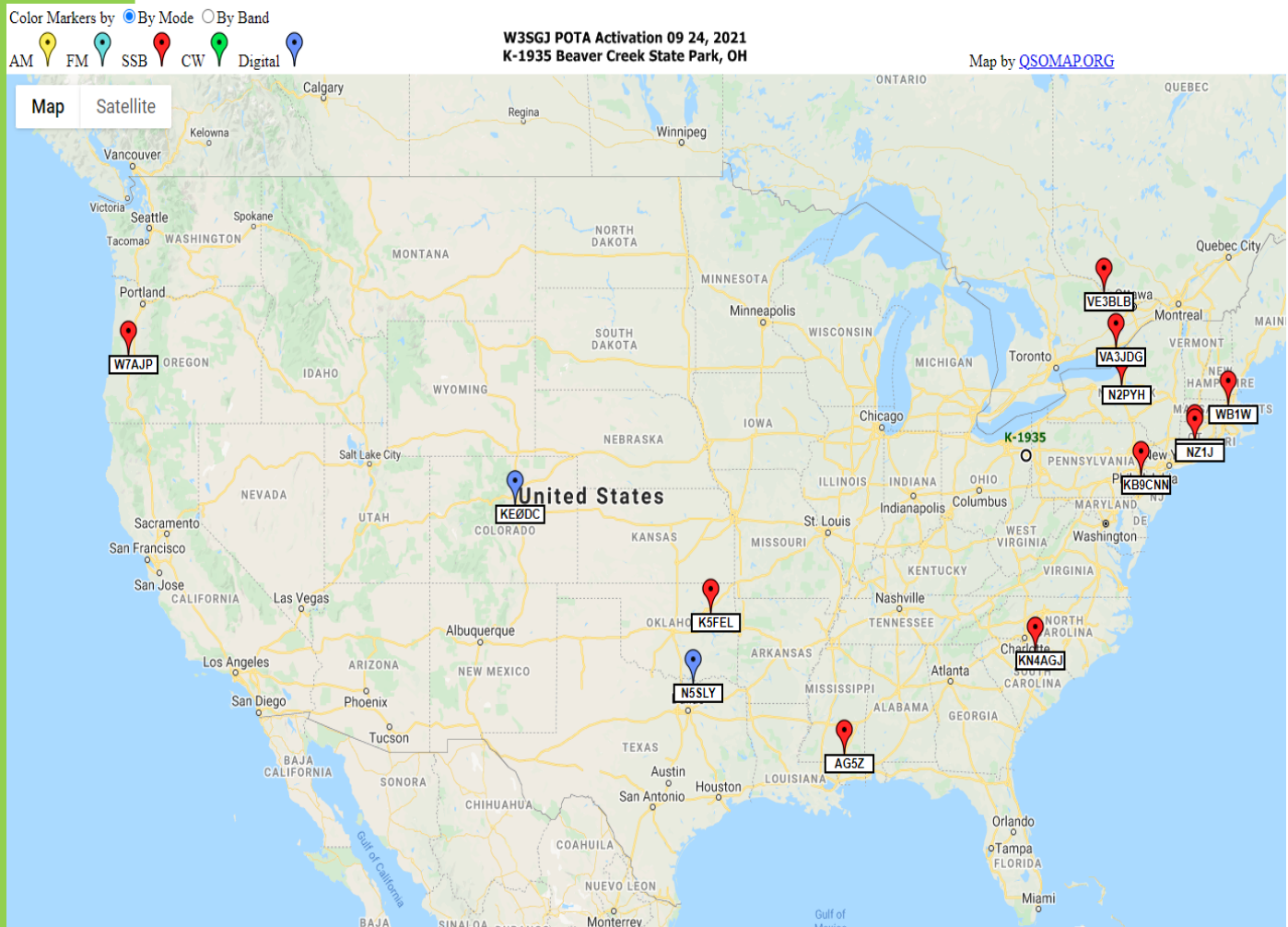
### **BVARA POTA Park Activation September 24, 2021 K-1935 Beaver Creek State Park, OH**

On Friday, September 24<sup>th</sup>, 2021, club members Tony, K3AHP and Rich, K3SOM activated the Beaver Creek State Park, just over the border in Ohio for POTA ‘Hunters’ everywhere. The POTA designation for the park is K-1935. With comfortable Fall temperatures and plenty of sunshine, two amateur radio stations running on LiFePO4 batteries were set up. A PowerFilm 30-watt portable solar panel was deployed and a BuddiPole Mini2 Charge Controller worked flawlessly to reliably provide power.

Although 100-watt radios like the ICOM-7300 can be used for POTA, the inability to hike and operate from less accessible sites severely limits some of the more choice locations. Two QRP radios with each using a Wolf River vertical antenna with multiple radials enabled a total of 13 contacts to be made on 20 and 40 meters. Both FT8 and SSB modes were employed. At a height of 1066 feet above sea level with the horizon visible in most directions, reception conditions were very good. Although a modest number of contacts were made, the lessons we learned tend to make every next outing an improvement.

# It's Your Dime

The US Map shows markers and call signs for each station that we worked on this activation. The color of the marker indicates whether the contact was on FT8 or SSB. *QSOMap.org* was used to generate this custom map by using the ADI log of contacts file as the input source.





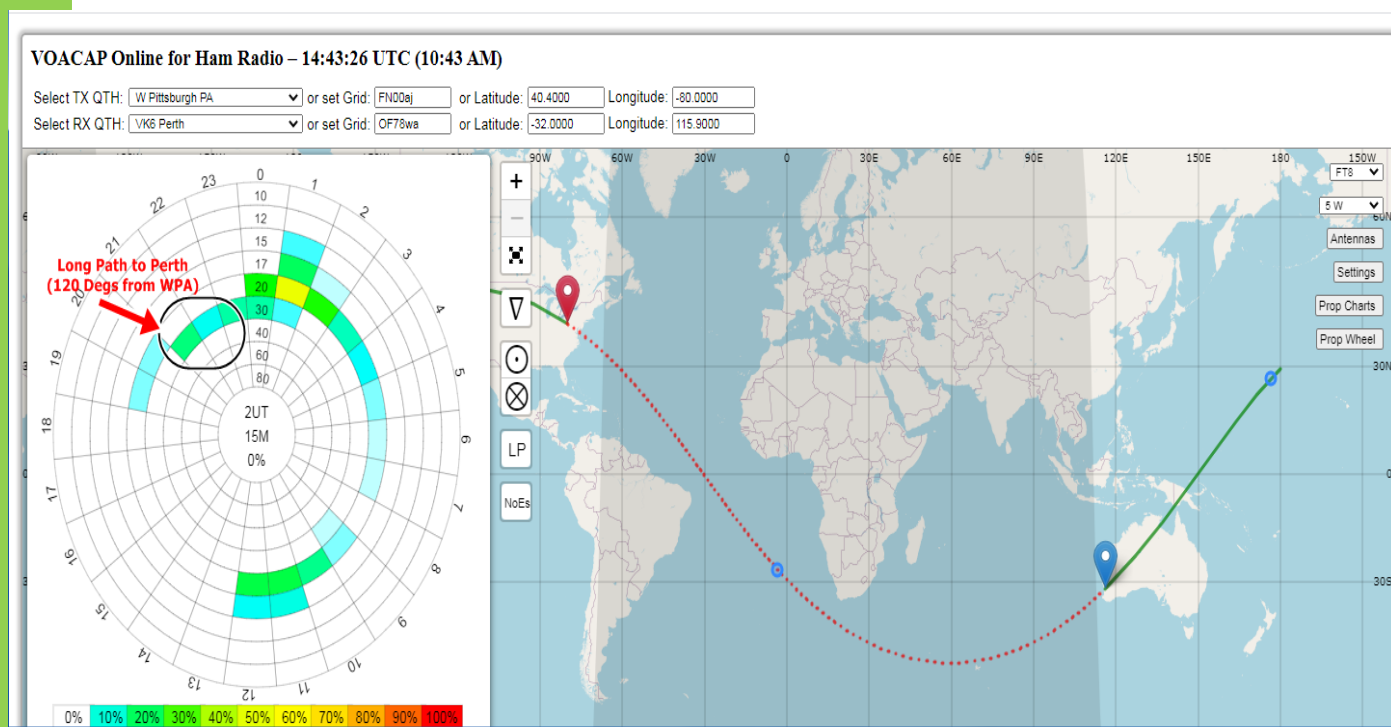
# Of Interest to All

## Best DX Yet on 5 Watts

There's joy in Mudville because I worked my best DX yet with only 5 Watts. Tim Jones, VK6EI in Perth, Australia running FT8 called CQ and I got him on the 2nd call. He was -3 dB and I received a -8 dB with the FT8 mode at around 6:30 pm EDT this evening (9/19/2021) on 30 Meters.

Short path, the miles were 11,339 and long path, the miles were 13,518. Short path is 2,267.8 miles per watt and long path, that is 2,703.6 miles per watt. Either way is a very long distance!

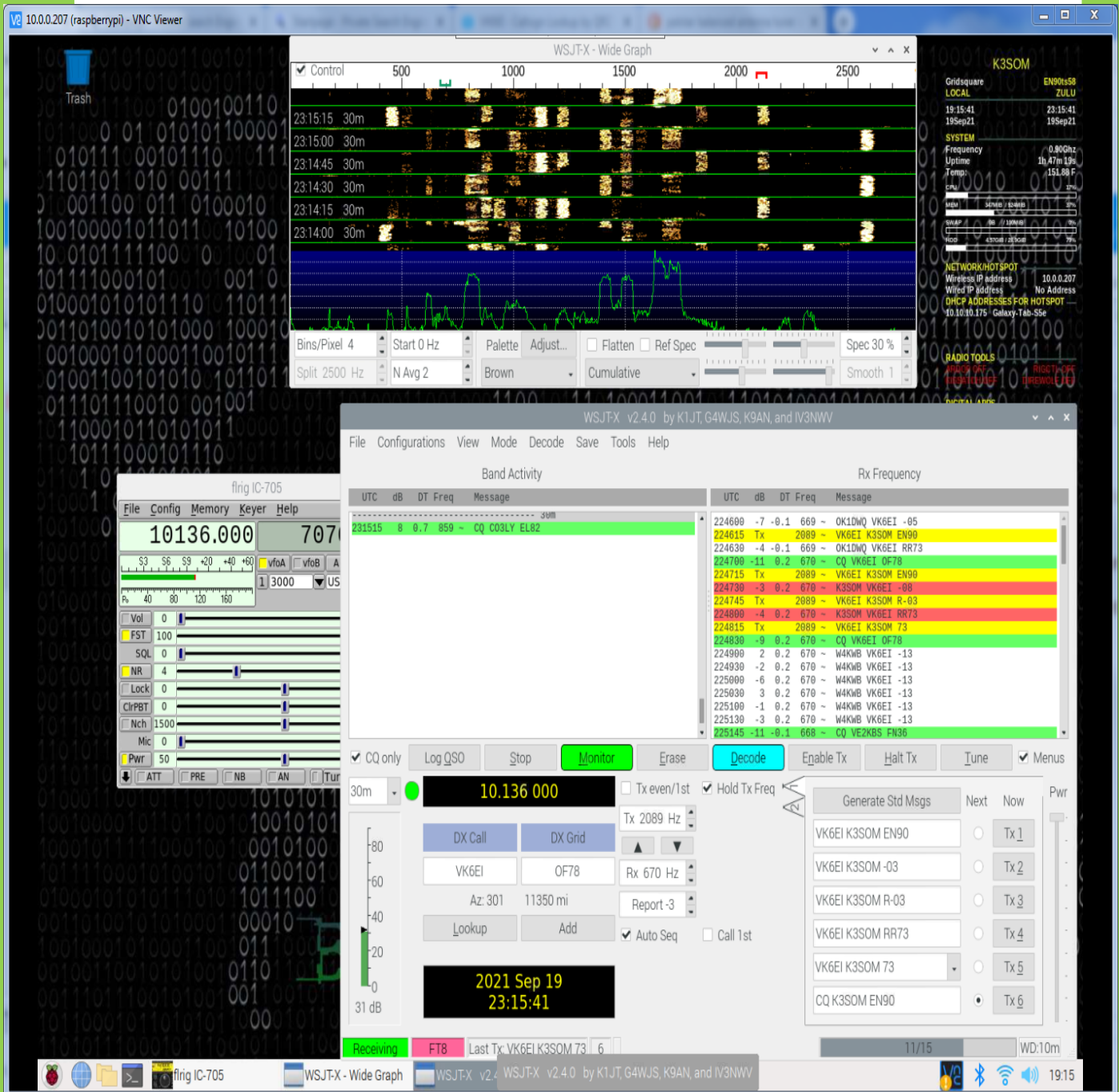
Curious, the next day I ran VOACap Online to review the propagation forecast at the time of the contact. There was no propagation for short path but about a 20 percent chance of a long path contact. So, I concluded that my personal record is 2,703.6 miles per watt.



# Of Interest to All

I used my 140-foot doublet antenna with open-wire line to the Palstar BT-1500A tuner and then with a 1:1 match, about 40 feet of RG-8X to the ICOM IC-705 and the Raspberry Pi. Virtually no QRN was observed and band noise was very low.

Rich - K3SOM



# Of Interest to All



## Free on-line Tech and General Classes

*COVID-19* has been a factor complicating in-person classes. Last year the Cuyahoga Falls Amateur Radio Club, CFARC ([www.cfarc.org](http://www.cfarc.org)), decided to offer their Tech and General Licensing classes online. They used *Google Meet* for online conferencing and *Google Classroom* to manage the class, distribute materials, provide sample quizzes, share resources, etc. A combination of local students, wider-ranging Ohio students and students from three other states studied with them.

CFARC will be doing this again this year and would like us to invite people from our area. Their plan is to do their usual local recruitment of students for their classes, but would also like to enlist the Beaver Valley Amateur Radio Association to help in recruiting candidates from our local area. The CFARC will refer any students from the Beaver County, Pennsylvania area to the BVARA for membership and most importantly, in-person mentoring (Elmering).

The Tech License classes will begin Sunday, Oct 10th and run for six weeks. Classes are 1:30 to 4:00 PM and all students must pre-register. The General License classes are not yet Scheduled, but will run in January/February 2022.

We have agreed to put their free online training offer in our *eQRM Newsletter* to help support local people who need a little help to be able to pass the exams. We welcome the opportunity!

Note: Participating students may need to purchase their own booklet (Amazon or their choice) at a nominal cost.

Resources/Links :

Class Info- [tiny.cc/beaham](http://tiny.cc/beaham)

Class Registration- [link \(http://tiny.cc/cfarc-tech\)](http://tiny.cc/cfarc-tech)

Contact Information

- Anthony Luscre, K8ZT [k8zt@arrl.net](mailto:k8zt@arrl.net) 330-650-1110
- Jim Grover, N8PZL [n8pzl@arrl.net](mailto:n8pzl@arrl.net) 330 928-8921

73 David Covalt KC3BXC



# Radio Sport

## Contest Corral

October 2021

Check for updates and a downloadable PDF version online at [www.arrl.org/contest-calendar](http://www.arrl.org/contest-calendar).

Refer to the contest websites for full rules, scoring information, operating periods or time limits, and log submission information.

Start - Finish Date-Time Date-Time	Bands	Contest Name	Mode	Exchange	Sponsor's Website
2 0600 3 0600	1.8-28	Oceania DX Contest, Phone	Ph	RS, serial	<a href="http://www.oceaniadxcontest.com">www.oceaniadxcontest.com</a>
2 0600 3 1800	3.5-28	TRC DX Contest	CW Ph	RST, serial, "TRC" if member	<a href="http://trcdx.org/rules-trc-dx">trcdx.org/rules-trc-dx</a>
2 0700 2 1000	3.5, 7	German Telegraphy Contest	CW	RST, LDK (if member)	<a href="http://agcw.de/index.php/en">agcw.de/index.php/en</a>
2 1200 3 1159	1.8-28	Russian WW Digital Contest	Dig	RST(Q), oblast code or serial	<a href="http://www.rdrclub.ru">www.rdrclub.ru</a>
2 1300 2 1330	144	Two-Meter Classic Sprint	CW Ph	Serial, 4-char grid square	<a href="http://fwrc.info/2021/05/21">fwrc.info/2021/05/21</a>
2 1600 3 1100	3.5, 7	International Hell-Contest	Dig	RST, serial	<a href="http://darc.de/der-club/referate/conteste">darc.de/der-club/referate/conteste</a>
2 1600 3 2200	1.8-28	California QSO Party	CW Ph	Serial CA county or SPC	<a href="http://www.cqp.org/Rules.html">www.cqp.org/Rules.html</a>
2 1800 3 1800	All	SKCC QSO Party	CW	RST, SPC, name, 4-char grid	<a href="http://www.skccgroup.com">www.skccgroup.com</a>
3 0500 3 2300	3.5-28	RSGB DX Contest	CW Ph	RS(T), serial	<a href="http://www.rsgbcc.org/hf">www.rsgbcc.org/hf</a>
3 0600 3 0900	3.5	UBA ON Contest, SSB	Ph	RS, serial, ON Section (if ON)	<a href="http://uba.be/en/hf/contest-rules">uba.be/en/hf/contest-rules</a>
3 2200 3 2359	3.5-14	Peanut Power QRP Sprint	CW Ph	RS(T), SPC, peanut nr or power	<a href="http://nogagrp.org/PeanutPower">nogagrp.org/PeanutPower</a>
4 1900 4 2030	3.5	RSGB 80-Meter Autumn Series, CW	CW	RST, serial	<a href="http://www.rsgbcc.org/hf">www.rsgbcc.org/hf</a>
5 0100 5 0300	3.5-28	ARS Spartan Sprint	CW	RST, SPC, power	<a href="http://arsqr.blogspot.com">arsqr.blogspot.com</a>
6 1700 6 2000	144	VHF-UHF FT8 Activity Contest	Dig	4-char grid square	<a href="http://ft8activity.eu/index.php/en">ft8activity.eu/index.php/en</a>
6 1900 6 2300	432	432 MHz Fall Sprint	CW Ph Dig	4-char grid square	<a href="http://svhfs.org">svhfs.org</a>
6 2000 6 2100	3.5	UKEICC 80-Meter Contest	Ph	6-char grid square	<a href="http://ukeicc.com/80m-rules.php">ukeicc.com/80m-rules.php</a>
7 1700 7 2000	3.5	SARL 80-Meter QSO Party	Ph	RS, serial, grid locator	<a href="http://www.sarl.org.za">www.sarl.org.za</a>
7 1700 7 2100	28	NRAU 10-Meter Activity Contest	CW Ph Dig	RS(T), 6-char grid	<a href="http://nrrlcontest.ru">nrrlcontest.ru</a>
7 1900 7 2100	1.8-50	SKCC Sprint Europe	CW	RST, SPC, name, mbr or "none"	<a href="http://www.skccgroup.com">www.skccgroup.com</a>
8 1400 9 0200	All	YLRL DX/NA YL Anniversary Contest	CW Ph Dig	Serial, RS(T), SPC	<a href="http://ylrl.org/wp/dx-na-yl-contest">ylrl.org/wp/dx-na-yl-contest</a>
9 0000 9 2359	1.8-28	QRP ARCI Fall QSO Party	CW	RST, SPC, mbr or power	<a href="http://qrparci.org">qrparci.org</a>
9 0000 10 1559	3.5-28	Makrothen RTTY Contest	Dig	4-char grid square	<a href="http://www.pl259.org/makrothen">www.pl259.org/makrothen</a>
9 0300 10 2100	1.8-UHF	Nevada QSO Party	CW Ph Dig	RS(T), NV county or ARRL section	<a href="http://nvqso.com/contest-rules">nvqso.com/contest-rules</a>
9 0600 10 0600	1.8-28	Oceania DX Contest, CW	CW	RST, serial	<a href="http://www.oceaniadxcontest.com">www.oceaniadxcontest.com</a>
9 0800 9 1400	902 and up	Microwave Fall Sprint	CW Ph Dig	6-char grid square	<a href="http://svhfs.org">svhfs.org</a>
9 1200 10 1200	3.5-28	Scandinavian Activity Contest, SSB	Ph	RST, serial	<a href="http://www.sactest.net">www.sactest.net</a>
9 1200 10 2359	1.8-50	SKCC Weekend Sprintathon	CW	RST, SPC, name, mbr or "none"	<a href="http://www.skccgroup.com">www.skccgroup.com</a>
9 1500 10 0500	1.8-144	Arizona QSO Party	CW Ph Dig	RS(T), AZ county or SPC	<a href="http://www.azqp.org">www.azqp.org</a>
9 1600 10 0400	144-432	Cosack's Honor VHF/UHF Contest	CW Ph Dig	RS(T), serial, 6-char grid	<a href="http://cshonor-vhf.ho.ua/eng1.html">cshonor-vhf.ho.ua/eng1.html</a>
9 1600 10 2200	1.8-UHF	Pennsylvania QSO Party	CW Ph	Serial, PA county or ARRL section	<a href="http://paqso.org">paqso.org</a>
9 1800 10 1800	1.8-144	South Dakota QSO Party	CW Ph Dig	RS(T), SD county or SPC	<a href="http://www.sdqso.org">www.sdqso.org</a>
9 2000 10 2000	1.8	160-Meter Great Pumpkin Sprint	Dig	RST, SPC	<a href="http://www.podxs070.com">www.podxs070.com</a>
10 0001 10 2359	28	10-10 International 10-10 Day Sprint	CW Ph Dig	Name, mbr or "0," SPC	<a href="http://www.ten-ten.org">www.ten-ten.org</a>
10 0600 10 0900	3.5	UBA ON Contest, CW	CW	RST, serial, ON Section (if ON)	<a href="http://uba.be/en/hf/contest-rules">uba.be/en/hf/contest-rules</a>
11 0000 11 0200	1.8-28	4 States QRP Second Sunday Sprint	CW Ph	RS(T), SPC, mbr or power	<a href="http://www.4sqr.com">www.4sqr.com</a>
13 0030 13 0230	3.5-14	NAQCC CW Sprint	CW	RST, SPC, mbr or power	<a href="http://naqcc.info">naqcc.info</a>
13 1700 13 2000	432	VHF-UHF FT8 Activity Contest	Dig	4-char grid square	<a href="http://ft8activity.eu/index.php/en">ft8activity.eu/index.php/en</a>
13 1900 13 2030	3.5	RSGB 80-Meter Autumn Series, Data	Dig	RST, serial	<a href="http://www.rsgbcc.org/hf">www.rsgbcc.org/hf</a>
16 0000 17 2359	3.5-28	JARTS WW RTTY Contest	Dig	RST, age of operator	<a href="http://jarts.jp/rules2021.html">jarts.jp/rules2021.html</a>
16 0001 17 2359	28	10-10 International Fall Contest, CW	CW	Name, mbr or "0," SPC	<a href="http://www.ten-ten.org">www.ten-ten.org</a>
16 1400 17 0200	All	New York QSO Party	CW Ph Dig	RS(T), NY county or SPC	<a href="http://www.nyqp.org">www.nyqp.org</a>
16 1500 17 1459	3.5-28	Worked All Germany Contest	CW Ph	RS(T), DOK or "NM" or serial	<a href="http://darc.de/der-club/referate/conteste">darc.de/der-club/referate/conteste</a>
16 2000 16 2359	1.8-7, 21-50	Feld Hell Sprint	Dig	RST, mbr, SPC, grid	<a href="http://sites.google.com/site/feldhellclub">sites.google.com/site/feldhellclub</a>
16 2130 16 2230	7	Argentina National 7 MHz Contest	Ph	RS, 2-digit year first licensed	<a href="http://www.lu4aa.org">www.lu4aa.org</a>
17 0000 17 0200	14, 21	Asia-Pacific Fall Sprint, CW	CW	RST, serial	<a href="http://jsfc.org/apsprint">jsfc.org/apsprint</a>
17 0700 17 1000	144	UBA ON Contest, 2 Meters	CW Ph	RS(T), serial, ON Section (if ON)	<a href="http://uba.be/en/hf/contest-rules">uba.be/en/hf/contest-rules</a>
17 1700 18 0100	1.8-144	Illinois QSO Party	Ph	RS(T), IL county or SPC	<a href="http://www.w9awe.org/ilqp">www.w9awe.org/ilqp</a>
17 1900 17 2030	3.5	RSGB RoLo CW	CW	RST, previous 6-char grid received	<a href="http://www.rsgbcc.org/hf">www.rsgbcc.org/hf</a>
17 2300 18 0100	1.8-28	Run for the Bacon QRP Contest	CW	RST, SPC, mbr or power	<a href="http://qrpcontest.com/pigrun">qrpcontest.com/pigrun</a>
18 1300 22 2359	All	ARRL School Club Roundup	CW Ph	RS(T), Class (I/C/S), SPC	<a href="http://arrl.org/school-club-roundup">arrl.org/school-club-roundup</a>
18 1900 18 2030	3.5-14	RSGB FT4 Contest Series	Dig	4-char grid square	<a href="http://www.rsgbcc.org/hf">www.rsgbcc.org/hf</a>
20 1900 20 2030	3.5	AGCW Semi-Automatic Key Evening	CW	RST, serial, year first used a bug	<a href="http://aitagcw.de/index.php/en">aitagcw.de/index.php/en</a>
23 0000 24 2359	2.3 GHz and up	ARRL EME Contest	CW Ph Dig	Signal report	<a href="http://arrl.org/eme-contest">arrl.org/eme-contest</a>
23 1200 24 1200	3.5-28	UK/EI DX Contest, SSB	Ph	RS, serial, District Code (if UK/EI)	<a href="http://ukeicc.com/dx-contest-rules.php">ukeicc.com/dx-contest-rules.php</a>
23 1500 24 1500	1.8	Stew Perry Topband Challenge	CW	4-char grid square	<a href="http://www.kkn.net/stew">www.kkn.net/stew</a>
24 0000 24 0400	3.5-14	North American SSB Sprint Contest	Ph	Other's call, your call, serial, name, SPC	<a href="http://ssbsprint.com/rules">ssbsprint.com/rules</a>
24 1400 27 0800	1.8-144	Classic Exchange, CW	CW	Name, RST, SPC, radio model	<a href="http://www.classicexchange.org">www.classicexchange.org</a>
24 1800 26 0300	1.8-UHF	Telephone Pioneers QSO Party	CW Ph Dig	Chapter nr or RS(T), name	<a href="http://www.tpqso.com">www.tpqso.com</a>
27 0000 27 0200	1.8-50	SKCC Sprint	CW	RST, SPC, name, mbr or "none"	<a href="http://www.skccgroup.com">www.skccgroup.com</a>
27 2000 27 2100	3.5	UKEICC 80-Meter Contest	CW	6-char grid square	<a href="http://ukeicc.com/80m-rules.php">ukeicc.com/80m-rules.php</a>
28 1900 28 2030	3.5	RSGB 80-Meter Autumn Series, SSB	Ph	RS, serial	<a href="http://www.rsgbcc.org/hf">www.rsgbcc.org/hf</a>
29 1600 29 2359	3.5-14	Zombie Shuffle	CW	RST, SPC, Zombie nr or area code, name	<a href="http://www.zianet.com/grp">www.zianet.com/grp</a>
30 0000 31 2359	1.8-28	CQ Worldwide DX Contest, SSB	Ph	RS, CQ Zone	<a href="http://www.cqww.com">www.cqww.com</a>