

# THE eQRM

AUGUST 2025



## The BVARA in Beaver County Pennsylvania

Beaver Valley Amateur Radio Association

W3SGJ

2M Repeater

145.310

PL 131.8



**On the Cover:** Time to shuck some corn for the BVARA Corn Roast! Join the group and enjoy some summer harvest.

## Inside this edition

Who We Are	3	Hamfests & General	9
This Month	4	Announcements	
Get a License or Upgrade	6	Of Interest to All	14
New License and Upgrades	7	Bits and Pieces	16
Membership	8	Radio Sport	17

### Check into our nets

#### Wednesday 2 Meter

**8:30PM on 145.310 MHz PL 131.8**

#### Wednesday 10 Meter

**9:00PM on 28.470 MHz**



The eQRM is a publication of the Beaver Valley Amateur Radio Association (BVARA) and is Copyright 2010 - 2025. All material presented in this publication is not necessarily the views of the American Radio Relay League (ARRL), BVARA, or members of the said organizations. If you would like to contact the editor of the eQRM, please email David at [kc3bxc.73@gmail.com](mailto:kc3bxc.73@gmail.com). Please visit us online at [www.W3SGJ.org](http://www.W3SGJ.org). To subscribe to our newsletter, please visit [W3SGJ.org/newsletter.php](http://W3SGJ.org/newsletter.php)

# Who We Are

## 2025 BVARA OFFICERS

President: Jack Spencer, KZ3Z

Vice President: Larry Homich, KC3ROS

2nd Vice Pres.: Greg Burns KCTFW

Treasurer: Pam Spencer, W3PMS

Secretary: Tom Stoops N3XC

Director: Tony Pavilonis, K3AHP

Director: Jim Allen, KC3IXE

Director: Douglas Lawrence K3GTX

Trustee: Doug Hanna, N4YKQ

## MONTHLY MEETINGS

E-Board meetings are now held the Saturday before the monthly club meeting.

VE testing begins at 5:00 PM.

Regular meetings are at 6:30 PM

All meetings are held at the  
Beaver County Emergency Services  
Center (A.K.A. The 911 Center )  
351 14th Street  
Ambridge, PA 15003  
on the second Thursday of every month  
(unless otherwise stated).

## 2025

Aug 09 Corn Roast

Sep 11

Oct 09

Nov 13

Dec 06 Christmas Party

## 2026

Jan 08

Feb 12

Mar 12

Apr 09

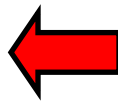
May 14



**\* No Testing this month \***

Everyone will be at the BVARA  
Corn Roast.

Testing will resume at our September  
Regular Club Meeting.



# This Month

***This Month:***

***Good Food, Radio Comradery and Fun***

***Speaker:***

***Your tummy and Your social desire to  
be with other BVARA Members***

***\* No Club Meeting \*  
See you at the Corn Roast***

**BVARA Corn Roast**



***When :*** August 09, 2025 at 5 PM

***Where :*** Old Economy Park Pavilion #01

***Who :*** All BVARA members, family and guests



# More this Month

## Weekly

Thursday Morning Breakfast  
(or you can have lunch)

**Come join us!**



## BREAKFAST

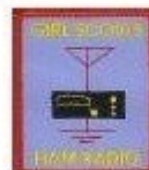
The BVARA meets every Thursday at the Freedom Square Diner in Center Township, just to the right of the Cinemark Center Township Marketplace at 09:30 AM. All radio amateurs and those interested in amateur radio are encouraged to come join us at our Thursday morning breakfast.



## See you

RACES / ARES

The eQRM Urges All County Hams to Participate.



The Freedom Square Diner in Monaca has a great wait staff. Come let them take your order.

The eQRM urges all Beaver County licensed amateurs to participate in the County's RACES and ARES programs.

Any Beaver County Amateur that is interested in participating in the RACES/ARES programs can do so by checking into the Beaver County Public Service Net which meets every Monday evening at 8:30 PM local time on the WW3AAA 146.850 MHz repeater (131.8 PL)

# Get your License or Upgrade

If you are interested in getting your first FCC license or upgrading your current amateur radio license, the Beaver Valley Amateur Radio Association holds VE Test sessions (Volunteer Examinations) the second Thursday of each month at the Beaver County Emergency Services Center in Ambridge Pennsylvania prior to our BVARA Club meeting. If there is no meeting there is no test session. Please come take your test with us!

For more information, contact :  
Rich Soltesz, K3SOM  
(724) 847-0610  
k3som@arrl.net



## VE TEST SESSIONS

Beaver County Emergency Services Center 351 14th Street Ambridge, PA 15003.  
Tests begin promptly at 5 pm on the same day as BVARA Club Meetings  
(the second Thursday of the month).  
All classes of amateur radio license tests are administered.



ALL candidates MUST bring ALL of the following:

1. 2 forms of I.D. - one MUST be a photo I.D.
2. A pencil AND a pen with blue or black ink.
3. The original AND a photocopy of any valid ham license.
4. The original AND a photocopy of any C.S.C.E.
5. The test fee of \$15 - cash only.
6. Your FRN Number. (free from the FCC, call for details)



# New License and Upgrades

BVARA VE Testing

## Testing this Month :



### July 2025 VE Test Session Results

Our July VE Test Session had two candidates, with both candidates passing their Technician test, with one candidate upgraded to General. Our electronic filing system once again worked superbly.

Testing was conducted at our normal location at the Beaver County Emergency Services Center in Ambridge, PA. Our next VE Test Session will be on September 11<sup>th</sup>, 2025.

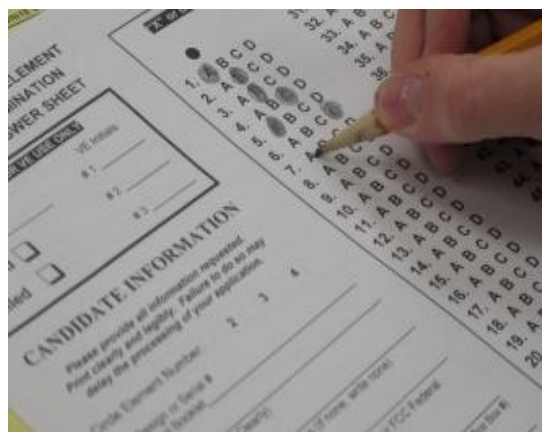
Congratulations to:

Brian Wockenfuss, KD3BOW, Technician, Monaca, PA

Larry Cumberledge, KD3BPG, General, Bridgeville, PA

If you hear them on the air, please congratulate them on their achievement! All of our BVARA testing would not be possible without the help of the following Extra-Class VE Team members:

Keith Custard – KC3TMC  
Reg Genola – W3REG  
Tony Pavilonis – K3AHP  
Scott Pelkofer - KC3KYZ  
Mick Pyzoha – N3OJP  
Bart Stack – KB3NFM  
Ron Victorelli – KC3TZT  
Bob Winkle – N3AZZ and  
Frank Witkowski – W3FJW



73 from Rich Soltesz – K3SOM, VE Liaison



# Membership Information

By becoming a BVARA member you help secure the future of Amateur Radio in Beaver County. Additionally, the BVARA receives a portion of each ARRL membership you purchase!

## Join the BVARA and ARRL

Sign up for:	Price	
<input type="radio"/> BVARA full membership	25.00	_____
<input type="radio"/> BVARA student membership	15.00	_____
<input type="radio"/> BVARA associate membership	10.00	_____
<input type="radio"/> BVARA Child under 21 at home membership	5.00	_____
A Club Donation		_____
	Total	Enclosed _____

ARRL Member?      Yes      No

Your License Class (If you have one.)

<input type="radio"/> Technician	Name _____
<input type="radio"/> General	Address _____
<input type="radio"/> Advanced	_____
<input type="radio"/> Extra Class	Email _____
	Phone _____
	Your Call sign _____
	Your Signature _____

Make check or money order payable to:

The Beaver Valley Amateur Radio Association, P.O. Box 424  
South Heights, Pa 15081



# Hamfests & General Announcements

## Gabfest 2025

### The Uniontown Amateur Radio Club – W3PIE will be conducting our 75th Annual GABFEST.

Saturday August 9th 8:00 AM – 3:00 PM

**Same Location, Same Free Parking, Same Great Food, New Presentations, Great Family Fun**

**The gates typically open around 8:00 AM with vendors welcome at any time Friday or 6 AM until 8 AM Saturday!**

**The GABFEST is held at the Radio Club Grounds located on Old Pittsburgh Road just off Northgate Highway/RT 43 Mon Fayette Expressway— near RT 51 and US RT 119 in Uniontown, PA**

**Talk-Ins will provided for directions and Gabfest information on 147.045 + (Full Time PL 131.8) just call for W3PIE Gabfest Talk-In.**

**No check in is needed if you know how to get here!**

**A Free Swap-N-Shop Set-up with registration!**

*Emergency or public restrictions that should arise will be will be posted here.*

**Address for your GPS: UARC-W3PIE is 433 Old Pittsburgh Rd, Uniontown, PA**

**Gabfest Flyer** will be available here sometime mid-year

**Ticket /Advance Ticket information can be found here or in the coming Gabfest Flyer**

As always there will be prizes in part thanks to:



Prize Sponsor



**ARRL**  
The national association for  
AMATEUR RADIO®

Prize Sponsor

**Contact Tony Alviar 724-430-1277 (M-F 8-4) or George Syner 724-439-1554**

**(leave message if no answer) if more information is needed. Also, Information is available anytime on 147.045 + (Full Time PL 131.8).**

**Additionally- email [officers@w3pie.org](mailto:officers@w3pie.org) for information**

**Make your plans to visit the UARC Gabfest this year!**

**GPS: 39°55'57.0"N 79°44'30.7"W LAT /LON: 39.932499, -79.741860**

# Hamfests & General Announcements



## 2025 SKYVIEW RADIO SOCIETY SWAP N SHOP!

SUNDAY AUGUST 24, 2025 8:00am until 1:00pm

LOCATED AT OUR CLUB GROUNDS NEAR NEW KENSINGTON PA

Aprox 13 miles northeast of Pittsburgh

2335 Turkey Ridge Road

New Kensington, PA 15068

Talk-in 146.640- 131.8pl

Admission \$5.00 – Table space is \$5.00 (Bring your own table)

**Main prizes ICOM IC-7300 and Astron SS-30M-AP power supply!**

Door prizes

**Begali CW key raffle**

Breakfast and lunch served

Get your Skyview Burger and your Skyview Dipole Hotdog!

Contact: John Italiano WA3KFS - 724-339-3821

[K3mjw@arrl.net](mailto:K3mjw@arrl.net)

<https://www.facebook.com/SkyviewRadioSociety>

Location is near the intersection of Rt. 366 and Rt. 380

**From Apollo / Leechburg:** Take Rt. 66 S to Rt. 380. Take 380 W to Rt. 366. Take Rt. 366 W (toward New Kensington) to the end of the 4 lane. Go ¼ mile past the end of the 4 lane. Turn right on Whitten Hollow Road. Go about ½ mile to first stop sign. Turn right on Turkey Ridge Road. Go about ½ mile to top of hill. Skyview is on the left.

**From New Kensington:** Take Rt. 366 E. Go about 5 miles from the Parnassas area. Look for the Hannan Building on the left. Go about 100 yards past the Hannan Building (If you get to the 4 lane, you went too far). Turn left on Whitten Hollow Road. Go about ½ mile to first stop sign. Turn right on Turkey Ridge Road. Go about ½ mile to top of hill. Skyview is on the left.

**From Monroeville / Parkway:** Take Rt. 286 E to Rt. 380 E. Take Rt. 380 E to Rt. 366. Take Rt. 366 W (toward New Kensington) to the end of the 4 lane. Go ¼ mile past the end of the 4 lane. Turn right on Whitten Hollow Road. Go about ½ mile to first stop sign. Turn right on Turkey Ridge Road. Go about ½ mile to top of hill. Skyview is on the left.

**From Greensburg:** Take Rt. 66 N to Rt. 366. Take Rt. 366 W (toward New Kensington). Cross over Route 380 and then go to the end of the 4 lane. Go ¼ mile past the end of the 4 lane. Turn right on Whitten Hollow Road. Go about ½ mile to first stop sign. Turn right on Turkey Ridge Road. Go about ½ mile to top of hill. Skyview is on the left.

# Hamfests & General Announcements



**Radio, Computer, Electronics**

## **SwapFest**

**Sunday, September 7, 2025**

**8 A.M. to 1 P.M.**



***Buy a ticket, and open your trunk!***

*Gate donation of \$5.00 per person. No additional charge for sellers.*

**Unionville Fire Department  
102 Mahood Road, Butler, PA 16001  
(Along PA Route 8, 4 miles north of US 422)**

In case of inclement weather, the SwapFest will be held indoors at the fire hall,  
and parking will be available on the asphalt.

**40° 56' 19" N, 79° 57' 34" W**

**No firearm sales! No alcoholic beverages permitted in swapfest area!**

### **FCC Amateur Radio Exams**

#### **PRIZES**

**(To be announced.)**

Winner need not be present to win.

#### **50/50 Raffles**

Prize tickets will be available at the club's table.

Talk in W3UDX 147.36/96, CTCSS 131.8 Hz

Web Site: W3UDX.ORG

#### **Breakfast and lunch available.**

(No individual food sales permitted.)

**Information: Dr. Mike Conlon, N2EM. N2EM@arrl.net; 724-496-3008**

**Sponsored by : Butler County Amateur Radio Association , Inc.**

# Hamfests & General Announcements



We cordially invite you to attend our 3<sup>rd</sup> annual hamfest

**HATFest 2025**  
**Sunday, September 28, 2025**

717 Washington Street  
Newell, WV 26050  
FROM 10:00AM till 4:00PM

For additional information and advanced tickets call

304-277-7552

or

EMAIL: [hatfest@wv8hat.org](mailto:hatfest@wv8hat.org)



**Talk-In Frequency**

**147.510 MHz**

Admission \$4.00 in advance (*through August 31<sup>st</sup>*) or \$5.00 at the door  
each admission includes 1 (ONE) Grand Prize Ticket

Vendor Table & Registration Fees:

**\$10 per Table (no power)**

**\$15 per Table (120VAC)**



This year's grand prize is a

**Yaesu FT-710 Field**

**100W HF/6M Transceiver  
with a 4.3 in. Color TFT  
Touchscreen Display**

***All prize winners must be present to  
win except for the Grand Prize***



# Hamfests & General Announcements

## Schedule of Events

### VE Exam Session

**1:00 PM**

**Suite 207 in the main building**

**Testing for all classes of amateur  
radio license**



**2 ATMs conveniently located on site**

**717 Washington Street  
Newell, WV 26050**

**Across the river from East Liverpool, Ohio  
Easy access from US 30  
on WV Route 2 in Newell**





# Of Interest to All

## BVARA Corn Roast



**Join our Beaver Valley Amateur Radio Association celebration of Summer!**

**When:** Saturday, August 9<sup>th</sup>, 2025 at 5:00 pm

**Where:** Old Economy County Park, Shelter 1 (enter the park and turn left at the swimming pool) where we go usually on Field Day but not this year!

**Who:** All BVARA members and their families and invited guests

**What:** Club furnishes the corn – please bring a home-baked dessert or covered dish. All home-brought foods are optional, but home-made extras add to the deliciousness. Hot Dogs, Coffee, pop, and bottled water will be available. Again, you may choose to bring your own (non-alcoholic) beverages.

**RSVP:** For planning purposes, we need a count by August 4<sup>th</sup> of how many people will be there, so please:

Email your response to [jjjallen@comcast.net](mailto:jjjallen@comcast.net) or [pavilonis@comcast.net](mailto:pavilonis@comcast.net) or

- Call Jim, KC3IXE at (724) 630-7433 or
- Call Tony, K3AHP at (412) 974-9183

*Special Note: Volunteers to help set up and clean up are especially welcome!*

# Of Interest to All

## BVARA Coming Attractions



---

### August 2025

**BVARA Club Corn Roast**

**No Club Meeting for August**

**Hamfests**

---

### September 2025

**Regular Club Meeting**

**Several Hamfests**

# Bits and Pieces

Hello all,

It is August! Holy mackerel where did the summer go? Time seems to go so fast. Okay back to the newsletter...



So, are you going to the BVARA Club Corn Roast? This will be a great event you don't want to miss. There is great food, good socializing and just plain old fun.

I will be there and I invite you to come too. This event kind of signals the end of summer, September is just around the corner. You may be thinking about what is ahead. That bad word that begins with Winter and ends with Snow. Okay, don't let me get too far ahead of things. I bring this up because I am just thinking a little about Winter Field Day.

Have you made time to finish any station upgrades? I have some things I want to get done on my personal station. I still have those Dadgum Poles to put in the ground. Stop laughing. Really, I will get them in the ground one day and put up my dream horizontal loop HF antenna. NO, really! Stop laughing.

There is no VE testing this month and no regular club meeting. We will get back in the groove next month. The next Club meeting is September eleventh and regular testing will start back up.

I hope to see you at the Corn Roast. I am planning to make some great memories that include you. Come be a part of this BVARA event.

Till next month...

Clear on your final, but I will be monitoring.

73 KC3BXC





# Radio Sport

## Contest Corral

August 2025

Check for updates and a downloadable PDF version online at [www.arrl.org/contest-calendar](http://www.arrl.org/contest-calendar).

Refer to the contest websites for full rules, scoring information, operating periods or time limits, and log submission information.

Start - Finish			Bands	Contest Name	Mode	Exchange	Sponsor's Website	
Date-Time	Date-Time	Date-Time						
2	0001	3	2359	28	10-10 International Summer Contest, SSB	Ph	Name, mbr or "0," SPC	<a href="http://www.ten-ten.org">www.ten-ten.org</a>
2	1200	2	2359	1.8-28	European HF Championship	CW Ph	RS(T), 2-digit year first licensed	<a href="http://euhf.s5cc.eu">euhf.s5cc.eu</a>
2	1800	3	0559	1.8-28	North American QSO Party, CW	CW	Name, state/DC/province/country	<a href="http://www.ncjweb.com">www.ncjweb.com</a>
2	1800	3	1800	222 MHz and up	ARRL 222 MHz and Up Distance Contest	CW Ph Dig	6-char grid square	<a href="http://www.arrl.org/222-mhz-and-up-distance-contest">www.arrl.org/222-mhz-and-up-distance-contest</a>
3	0600	3	1359	144	Hemus VHF Contest - 144 MHz	CW Ph	RS(T), 6-char grid square	<a href="http://radioclub-troyan.bg">radioclub-troyan.bg</a>
3	1400	3	1700	3.5-14	SARL HF Phone Contest	Ph	RS, serial	<a href="http://mysarl.org.za">mysarl.org.za</a>
5	0000	5	0200	3.5-28	ARS Spartan Sprint	CW	RST, SPC, power	<a href="http://ars-qrp.com">ars-qrp.com</a>
5	0800	5	0929	3.5	ZL Sprint	CW Ph Dig	CW/SSB: RS(T), outside temp; FT4: 4-char grid	<a href="http://www.nzart.org.nz">www.nzart.org.nz</a>
6	1700	6	2100	144	VHF-UHF FT8 Activity Contest	Dig	4-char grid square	<a href="http://www.ft8activity.eu">www.ft8activity.eu</a>
7	0000	8	0300	7	Walk for the Bacon QRP Contest	CW	Max 13 WPM; RST, SPC, name	<a href="http://qrpcontest.com/pigwalk40">qrpcontest.com/pigwalk40</a>
7	1800	7	2200	28	NRAU 10m Activity Contest	CW Ph Dig	RS(T), 6-char grid square	<a href="http://nrau.net/nrau-contests-in-general">nrau.net/nrau-contests-in-general</a>
9	0000	10	2359	3.5-28	WAE DX Contest, CW	CW	RST, serial	<a href="http://www.darc.de">www.darc.de</a>
9	0000	9	2359	3.5-28	FISTS Saturday Sprint	CW	RST, first name, mbr or "0," SPC	<a href="http://fistsna.org">fistsna.org</a>
9	1200	10	1159	3.5,7,28	YB Bekasi Merdeka Contest	Ph	RS, YB section or "DX"	<a href="http://bmc.orari-kotabekasi.com">bmc.orari-kotabekasi.com</a>
9	1400	10	0400	1.8-28	Maryland-DC QSO Party	CW Ph	MDC county/city or SPC	<a href="http://www.w3vpr.org">www.w3vpr.org</a>
9	1400	9	2200	3.5-28	Kentucky State Parks on the Air	CW Ph Dig	KY park abbr, SP or "DX"	<a href="http://k4msu.com/kypota">k4msu.com/kypota</a>
9	1800	9	2200	50	50 MHz Fall Sprint	CW Ph Dig	4-char grid square	<a href="http://packratvhf.com">packratvhf.com</a>
10	1300	10	1600	3.5-14	SARL HF Digital Contest	Dig	RST, serial	<a href="http://mysarl.org.za">mysarl.org.za</a>
11	0000	11	0200	1.8-28	4 States QRP Group Second Sunday Sprint	CW Ph	RS(T), SPC, mbr or pwr	<a href="http://www.4sqrp.com">www.4sqrp.com</a>
11	2200	13	2159	144	MMMonVHF/DUBUS 144 MHz Meteorscatter Sprint Contest	CW Ph Dig	Signal report	<a href="http://www.mmmmonvhf.de">www.mmmmonvhf.de</a>
12	0800	12	0929	3.5	ZL Sprint	CW Ph Dig	CW/SSB: RS(T), outside temp; FT4: 4-char grid	<a href="http://www.nzart.org.nz">www.nzart.org.nz</a>
12	1900	12	2029	3.5	DARC FT4 Contest	Dig	RST, 4-char grid square	<a href="http://www.darc.de">www.darc.de</a>
13	1700	13	2100	432	VHF-UHF FT8 Activity Contest	Dig	4-char grid square	<a href="http://www.ft8activity.eu">www.ft8activity.eu</a>
16	0000	17	1600	3.5-28	SARTG WW RTTY Contest	Dig	RST, serial	<a href="http://www.sartg.com">www.sartg.com</a>
16	0000	17	2359	2.3 GHz and up	ARRL EME Contest	CW Ph Dig	See rules	<a href="http://www.arrl.org/eme-contest">www.arrl.org/eme-contest</a>
16	0800	17	0800	1.8-28	Russian District Award Contest	CW Ph	RS(T), RU district code or serial	<a href="http://rdaward.org/rdac1.htm">rdaward.org/rdac1.htm</a>
16	0900	18	0759	10 GHz to light	ARRL 10 GHz and Up Contest	CW Ph Dig	6-char grid square	<a href="http://www.arrl.org/10-ghz-up">www.arrl.org/10-ghz-up</a>
16	1200	16	1300	7	SARL Youth QSO Party	Ph	RS, age	<a href="http://mysarl.org.za">mysarl.org.za</a>
16	1600	16	1759	1.8-28,50	Feld Hell Sprint	Dig	See rules	<a href="http://sites.google.com/site/feldhellclub">sites.google.com/site/feldhellclub</a>
16	1200	17	1200	1.8-28,50	Keyman's Club of Japan Contest	CW	RST, JA prefecture/district code or CQ zone	<a href="http://kcj-cw.com">kcj-cw.com</a>
16	1800	17	0559	1.8-28	North American QSO Party, SSB	Ph	Name, state/DC/province/country	<a href="http://www.ncjweb.com">www.ncjweb.com</a>
16	1800	17	2100	1.8-28	CVA DX Contest, CW	CW	RST, PY state, continent or "MIL"	<a href="http://cvadx.org">cvadx.org</a>
17	0000	17	2359	3.5-28	FISTS Sunday Sprint	CW	RST, first name, mbr or "0," SPC	<a href="http://fistsna.org">fistsna.org</a>
17	1700	17	2100	3.5-28	NJQRP Skeeter Hunt	CW Ph	RS(T), SPC mbr or power, "W"	<a href="http://www.qsl.net/w2lj">www.qsl.net/w2lj</a>
17	1800	17	2359	3.5-28	ARRL Rookie Roundup, RTTY	Dig	Name, 2-digit year first licensed, SPC or XE province	<a href="http://www.arrl.org/rookie-roundup">www.arrl.org/rookie-roundup</a>
17	2300	18	0100	1.8-28	Run for the Bacon QRP Contest	CW	RST, SPC, (mbr/pwr)	<a href="http://qrpcontest.com/pigrun">qrpcontest.com/pigrun</a>
19	0800	19	0929	3.5	ZL Sprint	CW Ph Dig	CW/SSB: RS(T), outside temp; FT4: 4-char grid	<a href="http://www.nzart.org.nz">www.nzart.org.nz</a>
20	1700	20	2100	1.2 GHz	VHF-UHF FT8 Activity Contest	Dig	4-char grid square	<a href="http://www.ft8activity.eu">www.ft8activity.eu</a>
21	0000	22	0300	14	Walk for the Bacon QRP Contest	CW	Max 13 WPM; RST, SPC, name	<a href="http://qrpcontest.com/pigwalk20">qrpcontest.com/pigwalk20</a>
21	1900	21	2000	3.5-14	NTC QSO Party	CW	Max 25 WPM, RST, mbr or "NM"	<a href="http://pi4ntc.nl">pi4ntc.nl</a>
23	0400	25	0400	1.8-28	Hawaii QSO Party	CW Ph Dig	RS(T), HI district, or SP	<a href="http://www.hawaiiqsoparty.org">www.hawaiiqsoparty.org</a>
23	1200	24	1200	3.5-28	YO DX HF Contest	CW Ph	RS(T), YO county, or serial	<a href="http://www.yodx.ro">www.yodx.ro</a>
23	1600	24	0400	1.8-28	Ohio QSO Party	CW Ph	RS(T), OH county, SP or "DX"	<a href="http://www.ohqp.org">www.ohqp.org</a>
23	1800	24	2100	1.8-28	CVA DX Contest, SSB	Ph	RS, PY state, continent or "MIL"	<a href="http://cvadx.org">cvadx.org</a>
24	1400	24	1700	3.5-14	SARL HF CW Contest	CW	RST, serial	<a href="http://mysarl.org.za">mysarl.org.za</a>
26	0800	26	0929	3.5	ZL Sprint	CW Ph Dig	CW/SSB: RS(T), outside temp; FT4: 4-char grid	<a href="http://www.nzart.org.nz">www.nzart.org.nz</a>
29	2200	31	2359	1.8-28	SCRY/RTTYOps WW RTTY Contest	Dig	RST, 4-digit year license first issued	<a href="http://rttyops.com/index.php">rttyops.com/index.php</a>
30	0000	30	2359	1.8-28,50	Feld Hell Sprint	Dig	See rules	<a href="http://sites.google.com/site/feldhellclub">sites.google.com/site/feldhellclub</a>
30	0600	31	0559	3.5-28	ALARA Contest	CW Ph	RS(T), serial, name	<a href="http://www.alara.org.au">www.alara.org.au</a>
30	1200	31	0300	1.8-28,50	U.S. Islands QSO Party	CW Ph Dig	RS(T), island designation or SPC	<a href="http://usislands.org">usislands.org</a>
30	1200	31	1200	1.8-28	World Wide Digi DX Contest	Dig	4-char grid square	<a href="http://ww-digi.com">ww-digi.com</a>
30	1300	31	0400	All, except WARC	Colorado QSO Party	CW Ph Dig	Name, county or SPC/DX prefix	<a href="http://ppraa.org/coqp">ppraa.org/coqp</a>
30	1400	31	2000	3.5-28,50	Kansas QSO Party	CW Ph Dig	RS(T), KS county, SP or "DX"	<a href="http://ksqsoparty.org">ksqsoparty.org</a>